

DUBLIN, VIRGINIA

AL-5084 (FAA)

24305

LOC I-PSK <b>110.9</b>	APP CRS <b>058°</b>	Rwy Idg TDZE Apt Elev <b>6201</b> <b>2105</b> <b>2105</b>
---------------------------	------------------------	--

# ILS or LOC Z RWY 6

## NEW RIVER VALLEY (PSK)

**NA** Inop table does not apply to S-ILS 6 all Cats and S-LOC 6 Cats A and B. For inop ALS, increase S-LOC 6 Cat C/D visibility to 1 3/8 SM. Circling NA for Cat D northwest of Rwy 6-24.

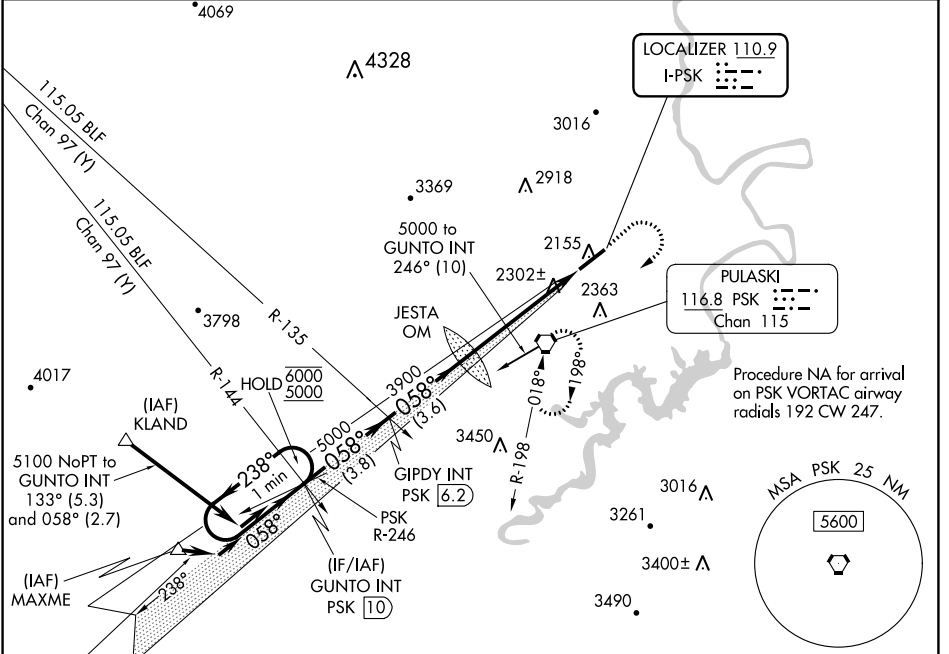
**MALSR** MISSED APPROACH: Climb to 3000 then climbing right turn to 5000 direct PSK VORTAC and hold, continue climb-in-hold to 5000.

AWOS-3  
**127.375**

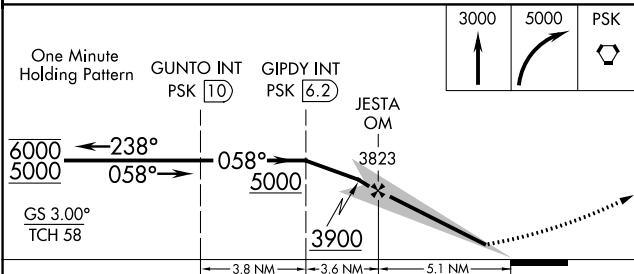
ROANOKE APP CON  
**126.0 339.8**

ROANOKE CLNC DEL  
**121.7**

UNICOM  
**122.7 (CTAF)**



ELEV 2105	TDZE 2105
-----------	-----------



CATEGORY	A	B	C	D
S-ILS 6		2305-1	200 (200-1)	
S-LOC 6		2560-1	455 (500-1)	
CIRCLING	2620-1 515 (600-1)	2680-1 575 (600-1)	2780-2 675 (700-2)	2780-2 1/4 675 (700-2 1/4)

FAF to MAP 5.1 NM	
Knots	Min:Sec
60	5:06
90	3:24
120	2:33
150	2:02
180	1:42

DUBLIN, VIRGINIA  
Amdt 5B 25FEB21

37°08'N-80°41'W

# NEW RIVER VALLEY (PSK)

## ILS or LOC Z RWY 6

NE-3, 28 NOV 2024 to 26 DEC 2024

NE-3, 28 NOV 2024 to 26 DEC 2024