


LOC I-RHI <b>111.3</b>	APP CRS <b>091°</b>	Rwy Idg <b>6799</b>
		TDZE <b>1623</b>
		Apt Elev <b>1623</b>

# ILS or LOC RWY 9

RHINELANDER/ONEIDA COUNTY (RHI)

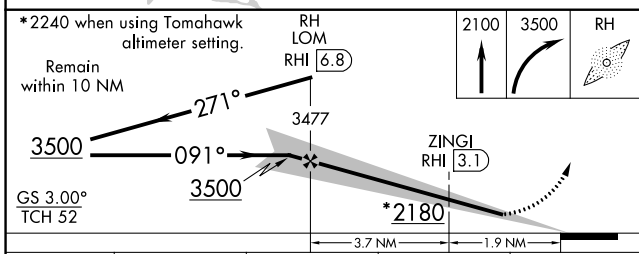
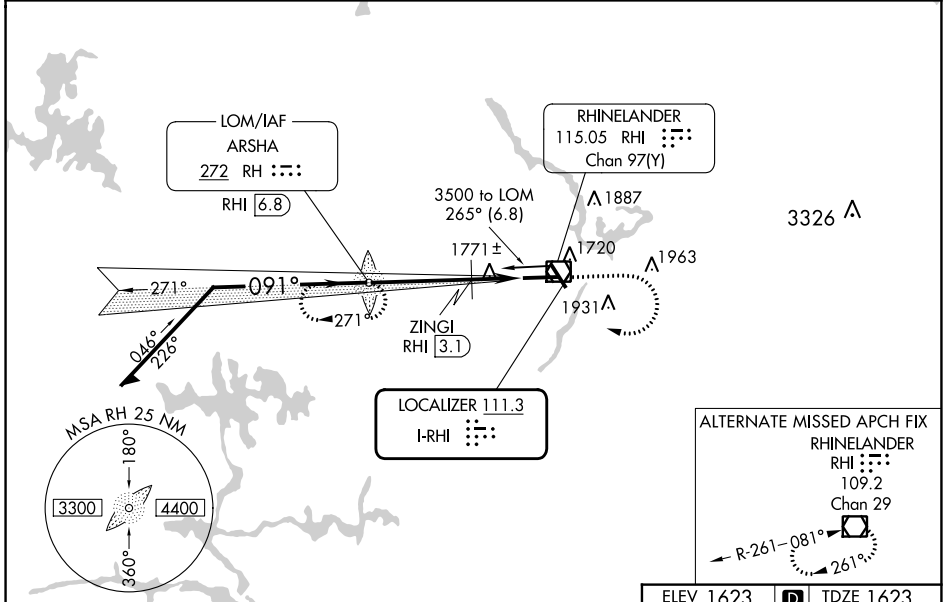
ADF or DME required.

MAISR 

MISSED APPROACH:  
Climb to 2100 then climbing right turn to 3500 direct ARSHA LOM/RHI VOR/DME 6.8 DME and hold, continue climb-in-hold to 3500.

▲ NA \*\* DME from RHI VOR/DME.

ASOS <b>126.825</b>	MINNEAPOLIS CENTER <b>133.65 281.5</b>	UNICOM <b>123.0 (CTAF)</b>
------------------------	---	-------------------------------



ELEV 1623	<b>D</b>	TDZE 1623
-----------	----------	-----------

CATEGORY	A	B	C	D
S-ILS 9	1823-½ 200 (200-½)			
S-LOC 9	2180-½	557 (600-½)	2180-1⅛	557 (600-1⅛)
<b>C</b> CIRCLING	2180-1 557 (600-1)	2260-1 637 (700-1)	2260-1¾ 637 (700-1¾)	2280-2 657 (700-2)
ZINGI FIX MINIMUMS**				
S-LOC 9	2040-½	417 (500-½)	2040-¾	417 (500-¾)
<b>C</b> CIRCLING	2100-1 477 (500-1)	2260-1 637 (700-1)	2260-1¾ 637 (700-1¾)	2280-2 657 (700-2)

Diagram details: 091°, 6800 X 150, -0.4% UP, 1659, 33, 2201, 2000, 1800, 1600, 1400, 1200, 1000, 800, 600, 400, 200.

HIRL Rws 9-27 and 15-33	<b>!</b>
REL Rws 15, 27 and 33	<b>!</b>
FAF to MAP 5.6 NM	
Knots	60 90 120 150 180
Min:Sec	5:36 3:44 2:48 2:14 1:52