

APP CRS	Rwy Idg	5201
150°	TDZE	1600
	Apt Elev	1623

RNAV (GPS) RWY 15

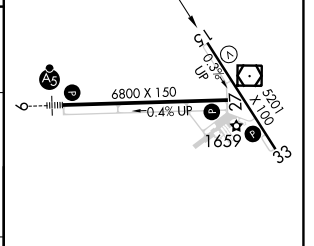
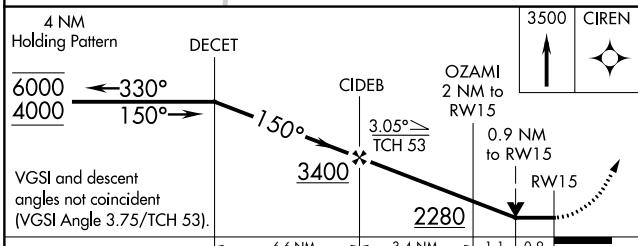
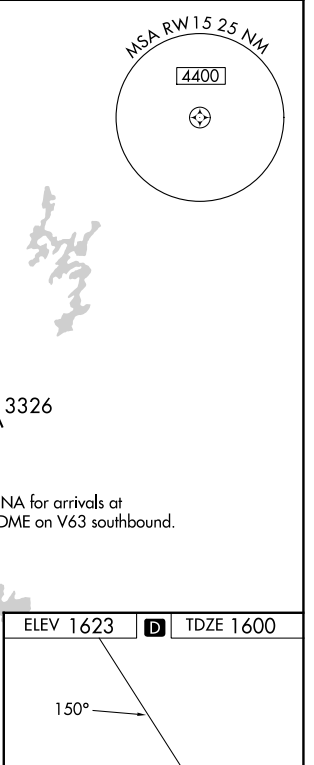
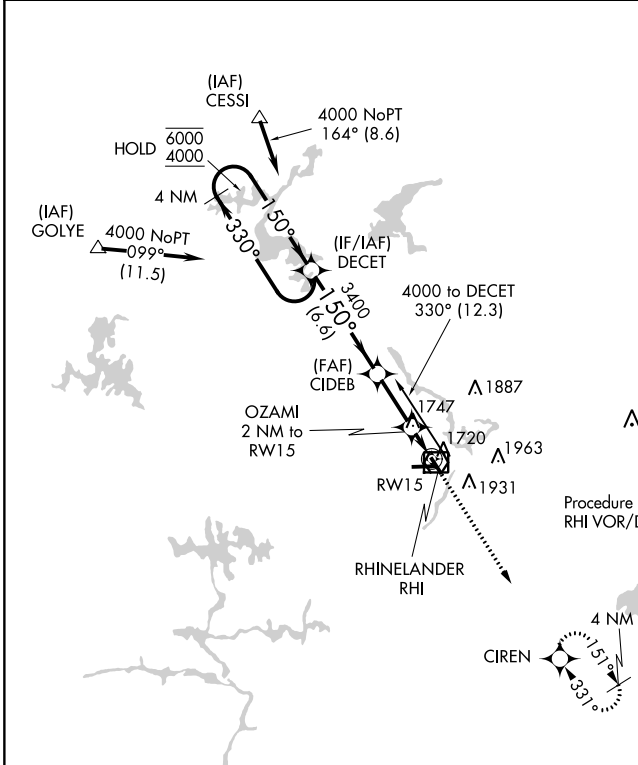
RHINELANDER/ONEIDA COUNTY (RHI)

RNP APCH - GPS.

⚠ Rwy 15 helicopter visibility reduction below ¾ SM NA.

MISSED APPROACH:
Climb to 3500 direct CIREN and hold.

ASOS 126.825	MINNEAPOLIS CENTER 133.65 281.5	UNICOM 123.0 (CTAF)
-------------------------------	--	--------------------------------------



CATEGORY	A	B	C	D
LNVA MDA	2000-1	400 (400-1)	2000-1½	400 (400-1½)
C CIRCLING	2100-1 477 (500-1)	2260-1 637 (700-1)	2260-1¾ 637 (700-1¾)	2280-2 657 (700-2)

HIRL Rws 9-27 and 15-33 **Ⓛ**
REIL Rws 15, 27 and 33 **Ⓛ**

EC-3, 28 NOV 2024 to 26 DEC 2024

EC-3, 28 NOV 2024 to 26 DEC 2024