

| | | | |
|--|------------------------|-----------------------------|---|
| LOC/DME I-ONA 109.35 Chan 30(Y) | APP CRS 300° | Rwy Idg TDZE Apt Elev | 5199 656 656 |
|--|------------------------|-----------------------------|---|

ILS Y or LOC Y RWY 30

WINONA MUNI/MAX CONRAD FLD (ONA)

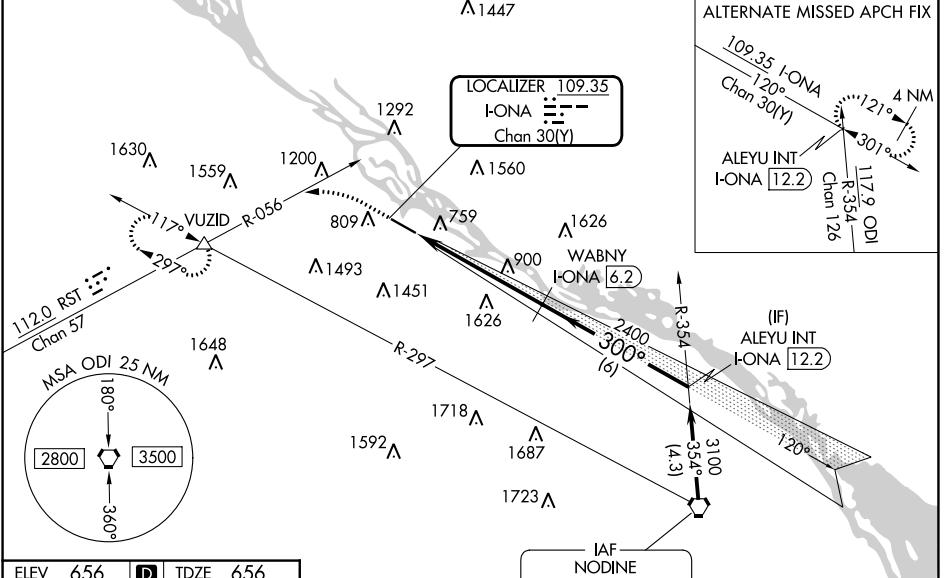
DME required.

V VDP NA with La Crosse altimeter setting. When local altimeter setting not received, use La Crosse altimeter setting and increase S-ILS 30 DA to 1127 and all visibilities 1/2 mile, increase all MDA 60 feet, and visibility S-ILS 30 Cat C/D 1/2 mile, and Circling Cat B 1/4 mile. For inop ALS, increase S-ILS 30 all Cats visibility to 1 1/2 mile, increase S-LOC 30 Cats C/D visibility to 1 1/2 mile. For inop ALS when using La Crosse altimeter setting, increase S-ILS 30 all Cats visibility to 1 1/2 mile, increase S-LOC 30 Cats C/D visibility to 1 1/2 mile.

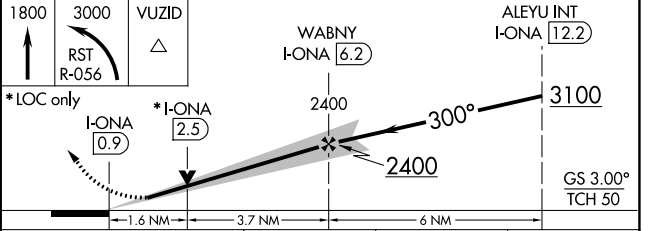
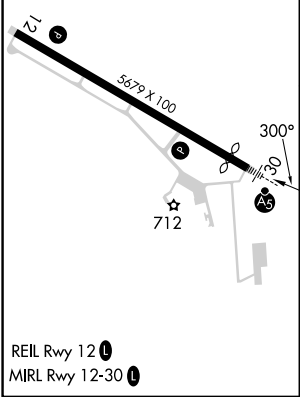
MALSR

MISSED APPROACH:
Climb to 1800 then climbing left turn to 3000 on RST VOR/DME R-056 to VUZID INT and hold.

| | | |
|--------------------------|--|-------------------------------|
| AWOS-3 118.075 | MINNEAPOLIS CENTER 128.6 363.0 | UNICOM 122.8 (CTAF) |
|--------------------------|--|-------------------------------|



| | | |
|----------|----------|----------|
| ELEV 656 | D | TDZE 656 |
|----------|----------|----------|



| CATEGORY | A | B | C | D |
|-------------------|----------------------------|-------------------------|----------------------|----------------------|
| S-ILS 30 | 1074-1 1/8 418 (500-1 1/8) | | | |
| S-LOC 30 | 1220-1/2 564 (600-1/2) | 1220-1/4 564 (600-1/4) | | |
| C CIRCLING | 1560-1/4 904 (1000-1/4) | 1600-1/4 944 (1000-1/4) | 1780-3 1124 (1200-3) | 1980-3 1324 (1400-3) |

NC-1, 28 NOV 2024 to 26 DEC 2024

NC-1, 28 NOV 2024 to 26 DEC 2024