

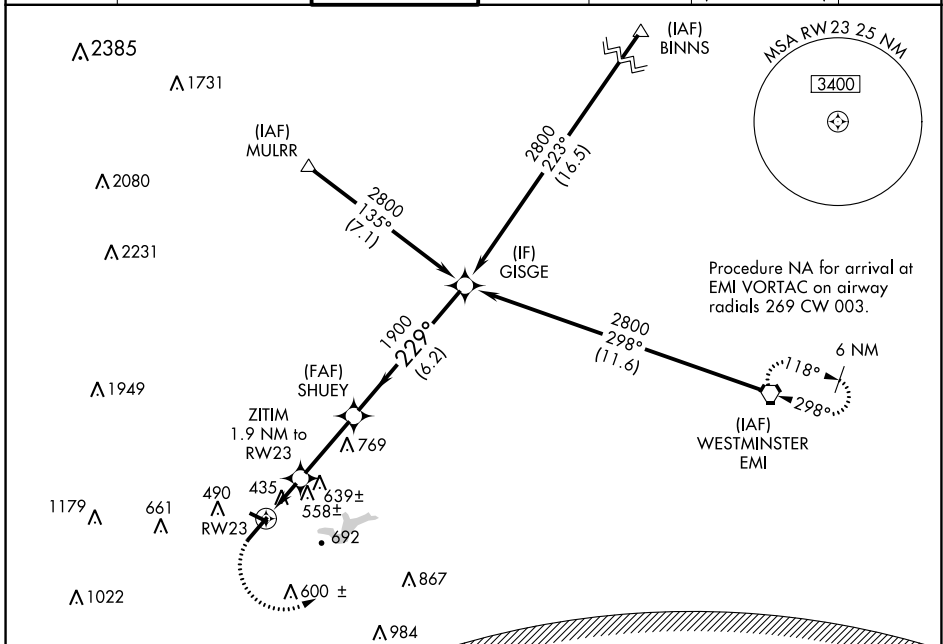
APP CRS	Rwy Idg	5819
229°	TDZE	296
	Apt Elev	306

RNAV (GPS) Y RWY 23

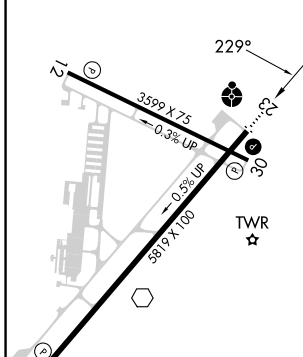
FREDERICK MUNI (FDK)

RNP APCH.	ODALS	MISSED APPROACH: Climbing left turn to 3000 direct EMI VORTAC and hold.
<p>▼ Inop table does not apply to Cat C. Rwy 23 helicopter visibility reduction below ¾ SM NA. Circling Rwy 30 NA at night.</p>		

ATIS	POTOMAC APP CON	FREDERICK TOWER ★	GND CON	CLNC DEL	CLNC DEL	UNICOM
124.875	126.1 338.25	132.4 (CTAF) 0	127.425	127.425	126.9 (When twr closed)	122.95

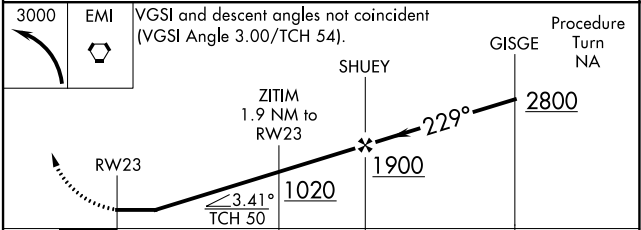


ELEV	306	TDZE	296
------	-----	------	-----



REIL Rwy 5
REIL Rwys 12, 23 and 30
HIRL Rwy 5-23
MIRL Rwy 12-30

WASHINGTON DC METROPOLITAN SFRA
WARNING -- WASHINGTON DC SFRA. CTC POTOMAC APP CON



CATEGORY	A	B	C	D
LNAV MDA	820-¾ 524 (600-¾)	820-1½ 524 (600-1½)	820-1½ 524 (600-1½)	820-1¾ 524 (600-1¾)
CIRCLING	920-1 614 (700-1)	1100-2¼ 794 (800-2¼)	1200-2¾ 894 (900-2¾)	

NE-3, 28 NOV 2024 to 26 DEC 2024

NE-3, 28 NOV 2024 to 26 DEC 2024