


WAAS CH 99506 W35A	APP CRS 352°	Rwy Idg TDZE Apt Elev	5800 1231 1234
--	------------------------	-----------------------------	---

RNAV (GPS) RWY 35

AUSTIN MUNI (AUM)

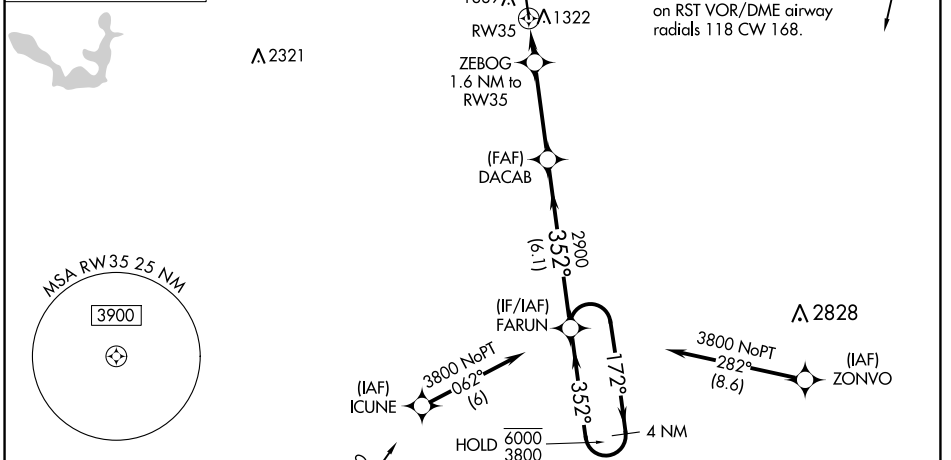
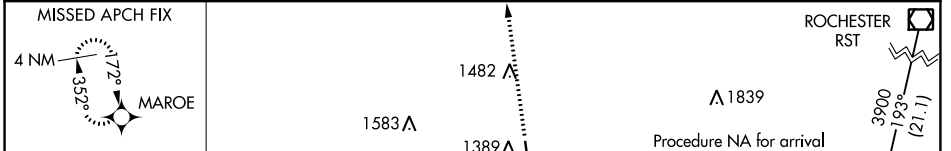
RNP APCH.

⚠ For uncompensated Baro-VNAV systems, LNAV/VNAV NA below -17°C or above 54°C. For inop ALS increase LNAV/VNAV all Cats visibility to ¾ SM and LNAV Cats C/D visibility to 1 SM.

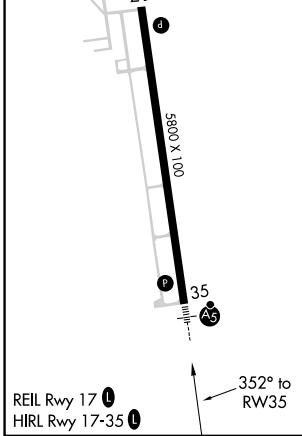
MALSR 


MISSED APPROACH: Climb to 2900 direct MAROE and hold.


AWOS-3 119.025	ROCHESTER APP CON * 119.8 251.125	UNICOM 122.7 (CTAF) 
--------------------------	---	---

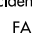


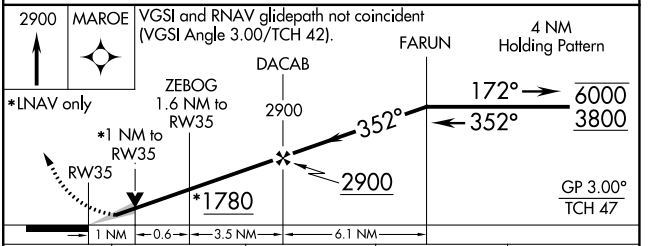
ELEV 1234	TDZE 1231
-----------	-----------




MASON CITY MCW  Procedure NA for arrival on MCW VOR/DME airway radials 343 CW 100.

2900 MAROE  VGSI and RNAV glidepath not coincident (VGSI Angle 3.00/TCH 42).

FARUN  4 NM Holding Pattern



CATEGORY	A	B	C	D
LPV DA		1431-½	200 (200-½)	
LNAV/VNAV DA		1483-½	252 (300-½)	
LNAV MDA	1580-½	349 (400-½)	1580-⅝	349 (400-⅝)
 CIRCLING	1700-1	466 (500-1)	1800-1½	1880-2 646 (700-2)

NC-1, 28 NOV 2024 to 26 DEC 2024

NC-1, 28 NOV 2024 to 26 DEC 2024