

WAAS CH <b>97727</b> <b>W08A</b>	APP CRS <b>076°</b>	Rwy Idg TDZE Apt Elev	<b>5004</b> <b>8</b> <b>10</b>
--	------------------------	-----------------------------	--------------------------------------

# RNAV (GPS) RWY 8

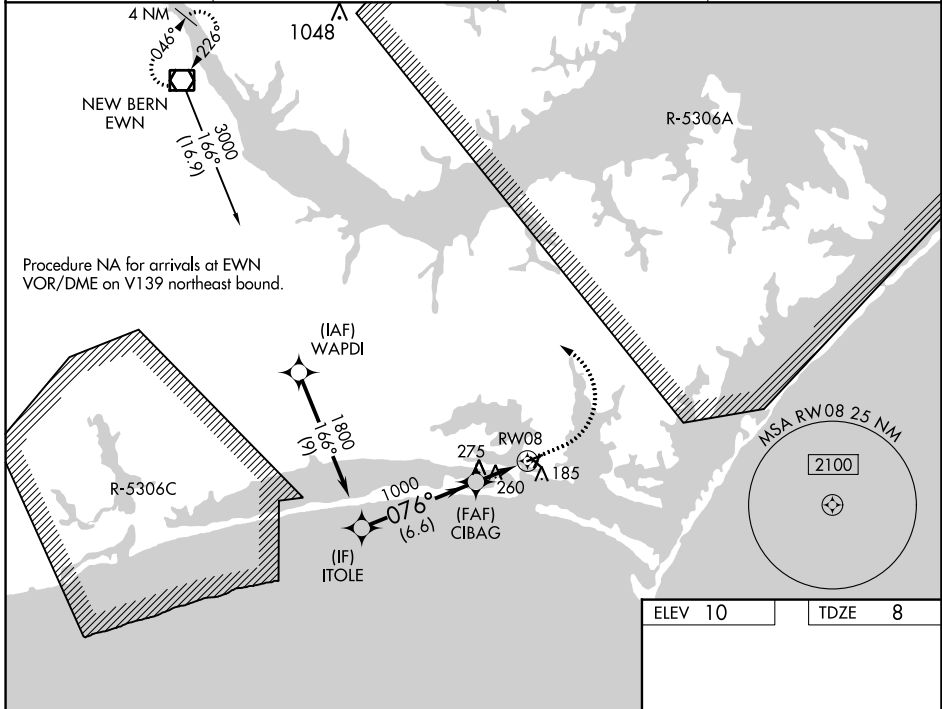
MICHAEL J SMITH FLD (MR.H)

**RNP APCH.**

**⚠** ATC clearance required to penetrate R-5306A and R-5306C.  
Rwy 8, helicopter visibility reduction below 1 SM NA.  
Straight-in Rwy 8 NA at night, Circling Rwy 8, 14, 32 NA at night.

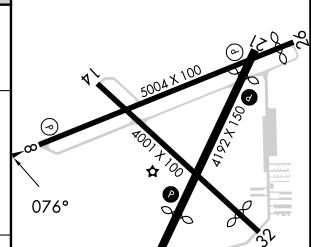
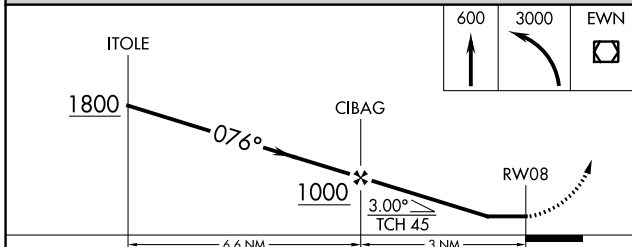
**MISSED APPROACH:** Climb to 600 then climbing left turn to 3000 direct EWN VOR/DME and hold.

ASOS <b>135.375</b>	CHERRY POINT APP CON <b>132.575 299.6</b>	CLNC DEL <b>125.65</b>	UNICOM <b>122.8 (CTAF) 0</b>
------------------------	--	---------------------------	---------------------------------



SE-2, 28 NOV 2024 to 26 DEC 2024

SE-2, 28 NOV 2024 to 26 DEC 2024



CATEGORY	A	B	C	D
LP MDA	520-1	512 (600-1)	520-1 $\frac{3}{8}$	512 (600-1 $\frac{3}{8}$ )
RNAV MDA	540-1	532 (600-1)	540-1 $\frac{1}{2}$	532 (600-1 $\frac{1}{2}$ )
<b>C</b> CIRCLING	540-1	530 (600-1)	580-1 $\frac{1}{2}$ 570 (600-1 $\frac{1}{2}$ )	620-2 610 (700-2)

REIL Rwy 8 and 26 **1**  
MIRL Rwy 3-21 and 8-26 **1**