

# VOR RWY 16

MAKS AAF (KPOE)

VOR FXU <b>108.4</b>	APCH CRS <b>158°</b>	Rwy ldg TDZE Arpt Elev <b>3913</b> <b>328</b> <b>330</b>
-------------------------	-------------------------	---

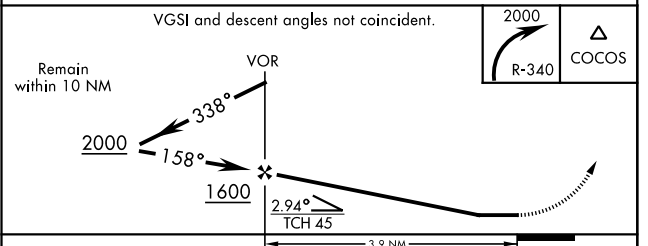
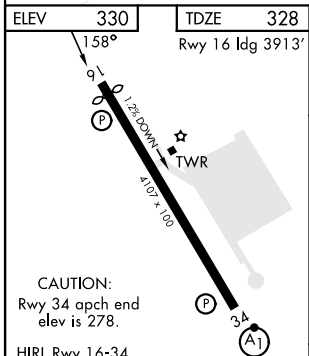
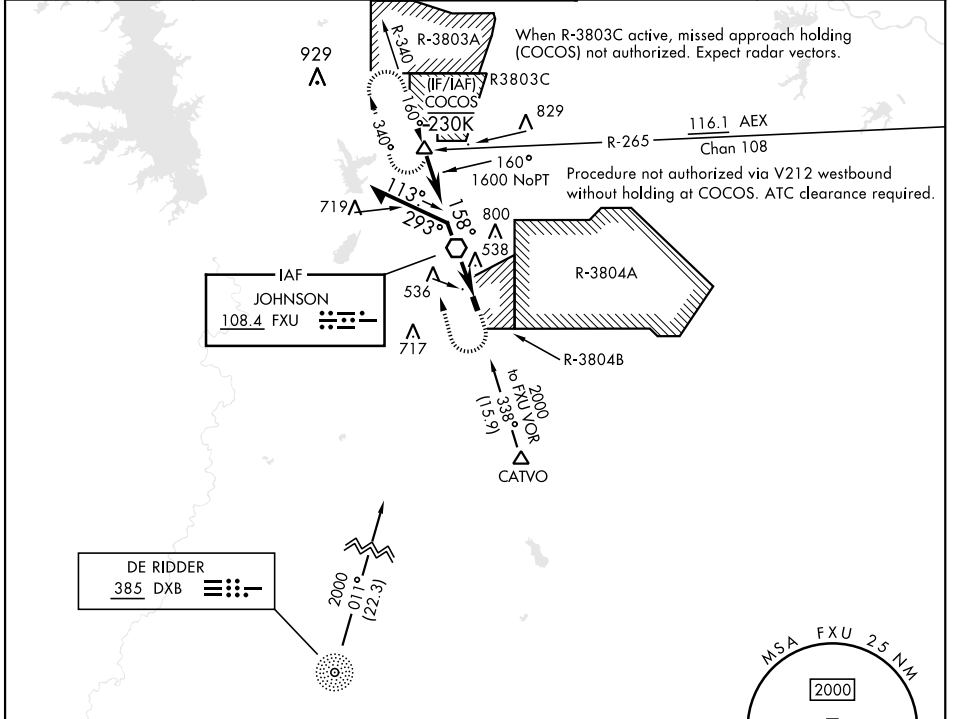
[USA]

RADAR required for arrivals at DXB NDB and CATVO.

MISSED APPROACH: Climbing right turn to 2000 on FXU R-340 to COCOS int and hold.

Helicopter visibility reduction below 3/4 miles NA.

ATIS <b>134.85 282.2</b>	APP CON <b>123.7 261.3</b>	TOWER* <b>119.0</b> (CTAF) <b>257.75</b>	GND CON <b>121.8 239.25</b>	ASR/PAR
-----------------------------	-------------------------------	---	--------------------------------	---------



FAF to MAP 3.9 NM					
Knots	60	90	120	150	180
Min:Sec	3:54	2:36	1:57	1:34	1:18

CATEGORY	A	B	C	D
S-16	820-1 492	(500-1)	820-1 3/8 492	(500-1 3/8)
CIRCLING	880-1 550	(600-1)	880-1 1/2 550 (600-1 1/2)	880-2 550 (600-2)

# VOR RWY 16

SC-4, 28 NOV 2024 to 26 DEC 2024

SC-4, 28 NOV 2024 to 26 DEC 2024