

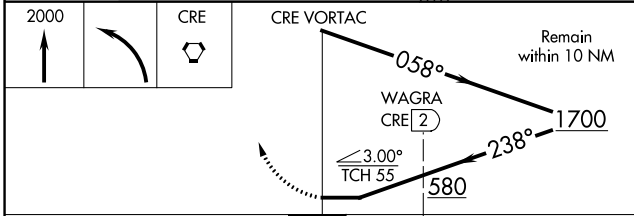
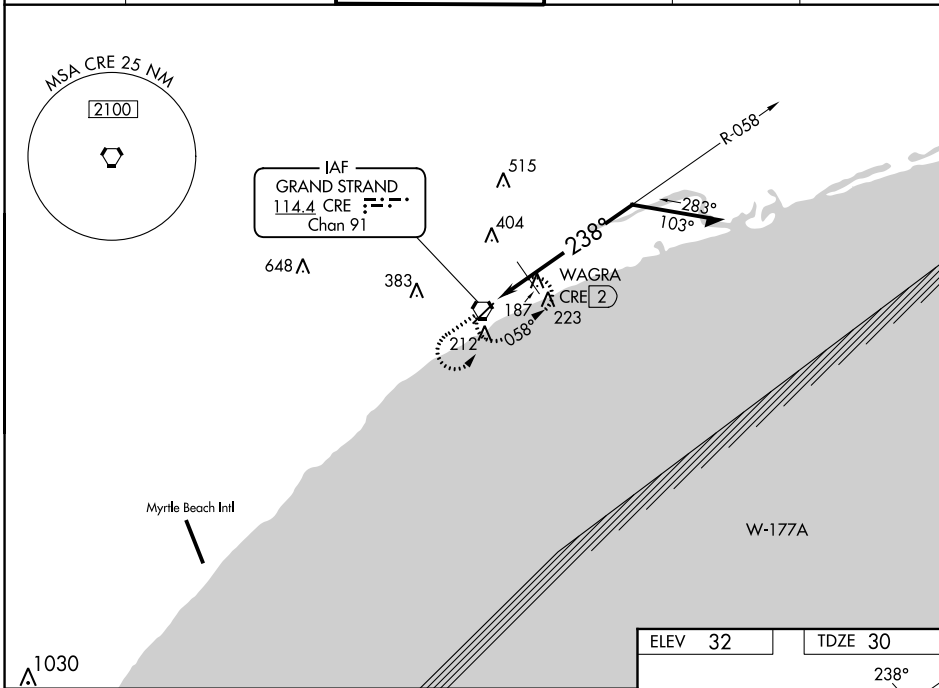
VORTAC CRE 114.4 Chan 91	APP CRS 238°	Rwy Idg 5997 TDZE 30 Apt Elev 32
--	------------------------	---

VOR RWY 23

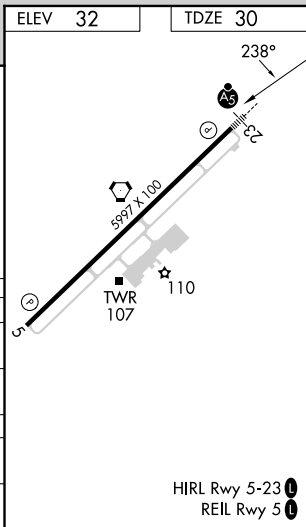
GRAND STRAND (CRE)

<p>⚠ Rwy 23 helicopter visibility reduction below $\frac{3}{4}$ SM NA. For inop ALS, increase S-23 Cats A/B visibility to 1 SM.</p>	<p>MALSR</p>	<p>MISSED APPROACH: Climb to 2000 then left turn direct CRE VORTAC and hold.</p>
---	--------------	--

ATIS 119.625	MYRTLE BEACH APP CON* 119.2 350.3	STRAND TOWER* 124.6 (CTAF) 257.6	GND CON 121.8 257.6	CLNC DEL 121.8	UNICOM 122.95
------------------------	---	--	-------------------------------	--------------------------	-------------------------



CATEGORY	A	B	C	D
S-23	580- $\frac{3}{4}$	550 (600- $\frac{3}{4}$)	580-1 $\frac{1}{8}$	550 (600-1 $\frac{1}{8}$)
C CIRCLING	580-1	548 (600-1)	720-2 688 (700-2)	720-2 $\frac{1}{4}$ 688 (700-2 $\frac{1}{4}$)
WAGRA FIX MINIMUMS				
S-23	480- $\frac{3}{4}$	450 (500- $\frac{3}{4}$)	480- $\frac{7}{8}$	450 (500- $\frac{7}{8}$)
C CIRCLING	520-1	488 (500-1)	720-2 688 (700-2)	720-2 $\frac{1}{4}$ 688 (700-2 $\frac{1}{4}$)



SE-2, 28 NOV 2024 to 26 DEC 2024

SE-2, 28 NOV 2024 to 26 DEC 2024