

FREDERICK  
109.0 FDK

MARTINSBURG  
112.1 MRB  
Chan 58

KESSEL  
110.8 ESL  
Chan 45

LINDEN  
114.3 LDN  
Chan 90

CHARLESTON  
117.4 HVQ  
Chan 121

CASANOVA  
116.3 CSN  
Chan 110

BECKLEY  
117.7 BKW  
Chan 124

MONTEBELLO  
115.3 MOL  
Chan 100

POTOMAC APP CON  
120.45 306.925  
IAD D-ATIS  
134.85  
JYO AWOS-3  
125.225

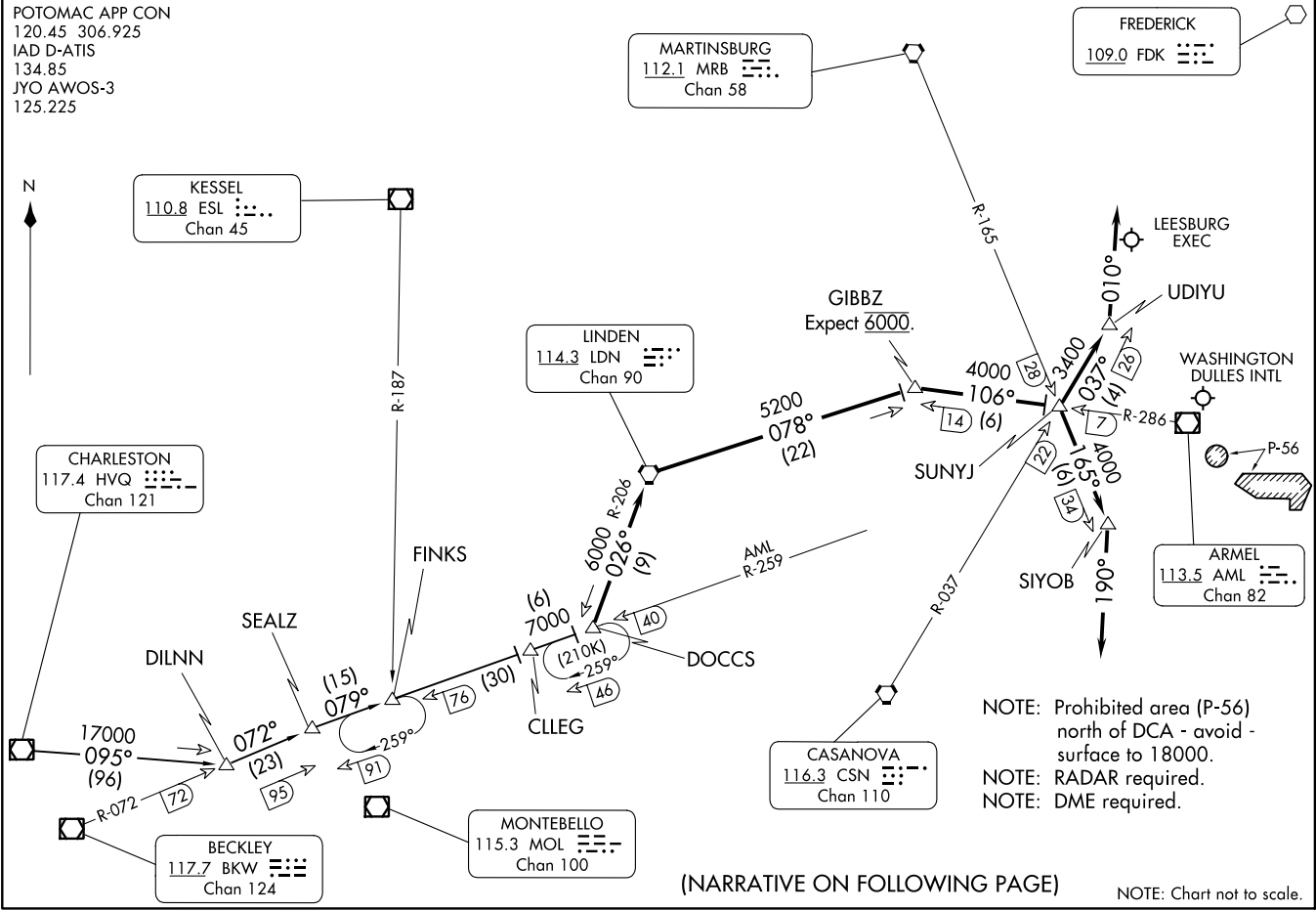
NOTE: Prohibited area (P-56)  
north of DCA - avoid -  
surface to 18000.  
NOTE: RADAR required.  
NOTE: DME required.

(NARRATIVE ON FOLLOWING PAGE)

NOTE: Chart not to scale.

NE-3, 28 NOV 2024 to 26 DEC 2024

NE-3, 28 NOV 2024 to 26 DEC 2024



ARRIVAL ROUTE DESCRIPTION

CHARLESTON TRANSITION (HVQ.DOCCS3): From over HVQ VOR/DME on HVQ R-095 to DILNN, then on BKW R-072 to SEALZ, then on AML R-259 to DOCCS. Thence....

LANDING IAD RUNWAYS 1C, 1L, 1R, 30: From over DOCCS on LDN VORTAC R-206 to LDN VORTAC, then on LDN VORTAC R-078 to GIBBZ, then on AML VOR/DME R-286 to SUNYJ, then on MRB VORTAC R-165 to SIYOB, then fly heading 190°, expect radar vectors to final approach course.

LANDING IAD RUNWAYS 19C, 19L, 19R: From over DOCCS on LDN VORTAC R-206 to LDN VORTAC, then on LDN VORTAC R-078 to GIBBZ, then on AML VOR/DME R-286 to SUNYJ, then on CSN VORTAC R-037 to UDIYU, then fly heading 010°, expect radar vectors to final approach course.

LANDING IAD RUNWAY 12: From over DOCCS, expect radar vectors to final approach course.

LANDING JYO: From over DOCCS on LDN VORTAC R-206 to LDN VORTAC, expect radar vectors to final approach course.

NE-3, 28 NOV 2024 to 26 DEC 2024

NE-3, 28 NOV 2024 to 26 DEC 2024