

(LIRCH.HYPER9)

21MAR24

HYPER NINE ARRIVAL (RNAV) Transition Routes

WASHINGTON, DC

POTOMAC APP CON
133.0 288.35
IAD D-ATIS
134.85
HEF ATIS
125.175
KNYG ATIS
263.15

RNAV 1 - DME/DME/IRU or GPS

RADAR required

NOTE: Jet and turboprop aircraft only.
NOTE: For aircraft capable of 180K or greater.

See following page for arrival routes.

LIRCH

DELRO

JOANE

LANCASTER LRP

SARAA

JETZ

PARKE

KEAVR

ALBANY ALB

ATWAN

FILGA

GANDE

ROBBINSVILLE RBV

MODENA MXE

(CONTINUED ON FOLLOWING PAGE)

N

NOTE: Chart not to scale.

- ALBANY TRANSITION (ALB.HYPER9);
- BARNES TRANSITION (BAF.HYPER9);
- BANKK TRANSITION (BANKK.HYPER9);
- FILGA TRANSITION (FILGA.HYPER9);
- GANDE TRANSITION (GANDE.HYPER9);
- MODENA TRANSITION (MXE.HYPER9);
- PARKE TRANSITION (PARKE.HYPER9);
- ROBBINSVILLE TRANSITION (RBV.HYPER9);

(LIRCH.HYPER9)

24081

HYPER NINE ARRIVAL (RNAV) Transition Routes

WASHINGTON, DC

(LIRCH.HYPER9)

24081

AL-5100 (FAA)

HYPER NINE ARRIVAL (RNAV) Arrival Routes

WASHINGTON, DC

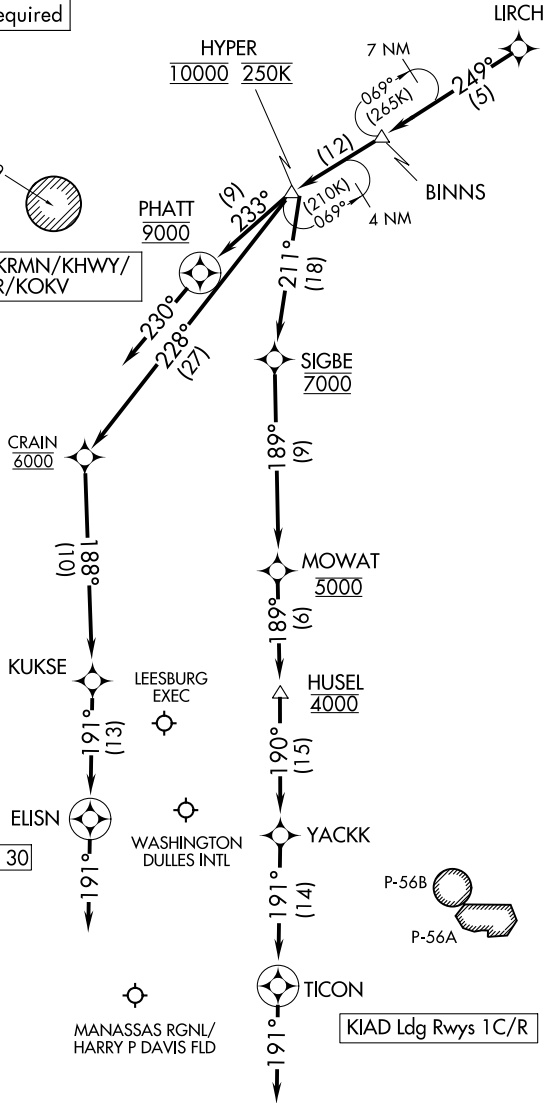
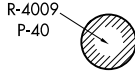
POTOMAC APP CON
 133.0 288.35
 IAD D-ATIS
 134.85
 HEF ATIS
 125.175
 KNYG ATIS
 263.15

RNAV 1 - DME/DME/IRU or GPS

RADAR required

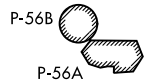
Ldg KNYG/KCJR/KEZF/KRMN/KHWY/
 KHFE/KMRB/KJYO/KFRR/KOKV
 KIAD Ldg Rwys 19L/C/R

NOTE: Jet and turboprop aircraft only.
 NOTE: For aircraft capable of 180K or greater.



KIAD Ldg Rwys 1L, 30

KIAD Ldg Rwys 1C/R



(CONTINUED ON FOLLOWING PAGE)

NOTE: Chart not to scale.

NE-3, 28 NOV 2024 to 26 DEC 2024

NE-3, 28 NOV 2024 to 26 DEC 2024

WASHINGTON, DC

ARRIVAL ROUTE DESCRIPTION

KIAD: From LIRCH on track 249° to BINNS, then on track 249° to cross HYPER at 10000 and at 250K.

LANDING KIAD RWY 1C/R: From HYPER on track 211° to cross SIGBE at 7000, then on track 189° to cross MOWAT at 5000, then on track 189° to cross HUSEL at 4000, then on track 190° to YACKK, then on track 191° to TICON, then on track 191°. Expect RADAR vectors to final approach course.

LANDING KIAD RWY 1L, 30: From HYPER on track 228° to cross CRAIN at 6000, then on track 188° to KUKSE, then on track 191° to ELISN, then on track 191°. Expect RADAR vectors to final approach course.

LANDING KIAD RWY 19L/C/R: From HYPER on track 233° to cross PHATT at 9000, then on track 230°. Expect RADAR vectors to final approach course.

LANDING ALL SATELLITE AIRPORTS: From LIRCH on track 249° to BINNS, then on track 249° to cross HYPER at 10000 and at 250K, then on track 233° to cross PHATT at 9000, then on track 230°. Expect RADAR vectors to final approach course.

NE-3, 28 NOV 2024 to 26 DEC 2024

NE-3, 28 NOV 2024 to 26 DEC 2024