

(PRTZL.PRTZL1) 24081

AL-5100 (FAA)

WASHINGTON DULLES INTL (IAD)  
WASHINGTON, DC

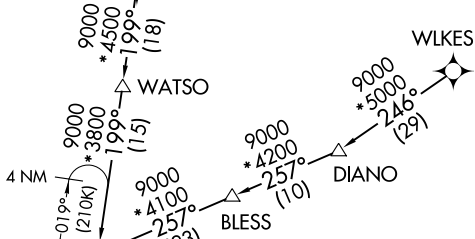
# PRTZL ONE ARRIVAL (RNAV)

POTOMAC APP CON  
120.45 306.925 (241°-330°)  
128.525 306.925 (091°-240°)  
126.1 338.25 (331°-090°)  
D-ATIS  
134.85

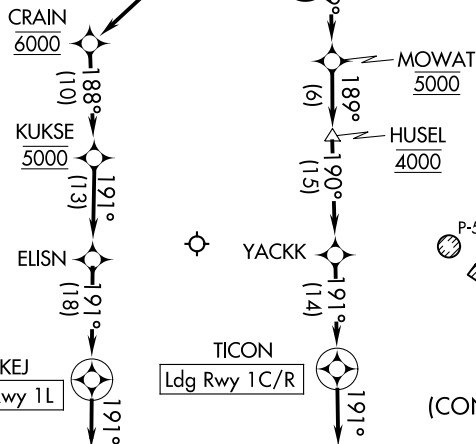
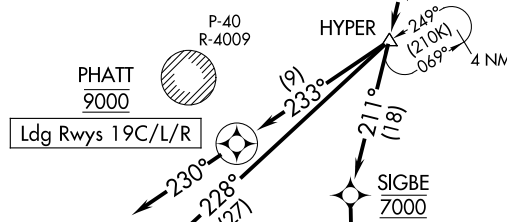
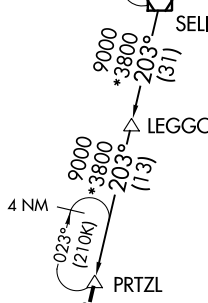
RNAV 1 - DME/DME/IRU or GPS.

RADAR required.

LYKOM



NOTE: For non-jet aircraft capable of 180K or greater.



NE-3, 28 NOV 2024 to 26 DEC 2024

NE-3, 28 NOV 2024 to 26 DEC 2024

(CONTINUED ON FOLLOWING PAGE)

NOTE: Chart not to scale.

# PRTZL ONE ARRIVAL (RNAV)

(PRTZL.PRTZL1) 21MAR24

WASHINGTON, DC  
WASHINGTON DULLES INTL (IAD)

# PRTZL ONE ARRIVAL (RNAV)

## ARRIVAL ROUTE DESCRIPTION

LYKOM TRANSITION (LYKOM.PRTZL1)  
SELINGSGROVE TRANSITION (SEG.PRTZL1)  
WLKES TRANSITION (WLKES.PRTZL1)

From PRTZL on track 203° to HYPER.

LANDING RUNWAYS 1C/R: From HYPER on track 211° to cross SIGBE at 7000, then on track 189° to cross MOWAT at 5000, then on track 189° to cross HUSEL at 4000, then on track 190° to YACKK, then on track 191° to TICON, then on track 191°. Expect RADAR vectors to final approach course.

LANDING RUNWAYS 1L, 30: From HYPER on track 228° to cross CRAIN at 6000, then on track 188° to cross KUKSE at 5000, then on track 191° to ELISN, then on track 191° to MIKEJ, then on track 191°. Expect RADAR vectors to final approach course.

LANDING RUNWAYS 19L/C/R: From HYPER on track 233° to cross PHATT at 9000, then on track 230°. Expect RADAR vectors to final approach course.

NE-3, 28 NOV 2024 to 26 DEC 2024

NE-3, 28 NOV 2024 to 26 DEC 2024