

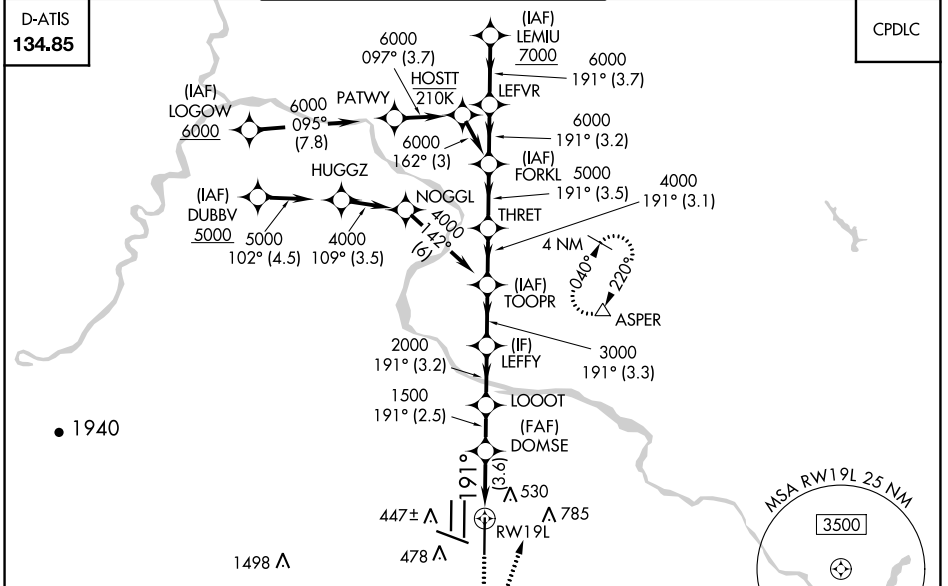
| | | |
|-------------|----------|--------------|
| APP CRS | Rwy Idg | 11500 |
| 191° | TDZE | 302 |
| | Apt Elev | 312 |

RNAV (RNP) Z RWY 19L

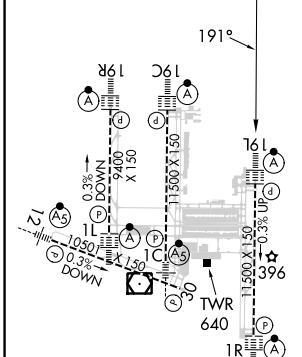
WASHINGTON DULLES INTL (IAD)

| | | |
|---|--------|--|
| RNP AR APCH - GPS. | ALSF-2 | MISSED APPROACH: Climb to 800 then climbing left turn to 3000 direct ASPER and hold. |
| ▼ For uncompensated Baro-VNAV systems, procedure NA below -13°C or above 54°C. Simultaneous approach authorized. For inop ALS, increase RNP 0.11 all Cats visibility to RVR 4500. | | |

| | | | |
|---|---|---|--------------------------------|
| POTOMAC APP CON 120.45 306.925 (241°-330°) 128.525 306.925 (091°-240°) 126.1 338.25 (331°-090°) | DULLES TOWER 120.1 317.8 (Rwys 1R/19L) 120.25 348.6 (Rwys 1C/19C) 134.425 348.6 (Rwys 1L/19R and 12/30) | GND CON 121.9 317.8 (EAST) 121.625 348.6 (WEST) | CLNC DEL 135.7 317.8 |
|---|---|---|--------------------------------|



| | | |
|----------|----------|----------|
| ELEV 312 | D | TDZE 302 |
|----------|----------|----------|



| | | | | | | | | | | |
|-----|------|-------|--|--------|--------|--------|--------|--------|--------|--------|
| 800 | 3000 | ASPER | VGSI and RNAV glidepath not coincident (VGSI Angle 3.00/TCH 75). | | | | LEMUI | | | |
| | | | DOMSE | LOOT | LEFFY | TOOPR | THRET | FORKL | LEFVR | LEMUI |
| | | | 1500 | 2000 | 3000 | 4000 | 5000 | 6000 | 6000 | 7000 |
| | | | 3.6 NM | 2.5 NM | 3.2 NM | 3.3 NM | 3.1 NM | 3.5 NM | 3.2 NM | 3.7 NM |
| | | | A | B | C | D | | | | |

| | |
|---|--|
| TDZ/CL Rwys 1C, 1L, 1R, 12, 19C and 19R | |
| REIL Rwy 30 | |
| HIRL All Rwys | |

| | | |
|-------------|--------|-------------|
| RNP 0.11 DA | 620/24 | 318 (400-½) |
| RNP 0.15 DA | 684/35 | 382 (400-¾) |
| RNP 0.30 DA | 730/40 | 428 (500-¾) |

AUTHORIZATION REQUIRED

NE-3, 28 NOV 2024 to 26 DEC 2024

NE-3, 28 NOV 2024 to 26 DEC 2024