

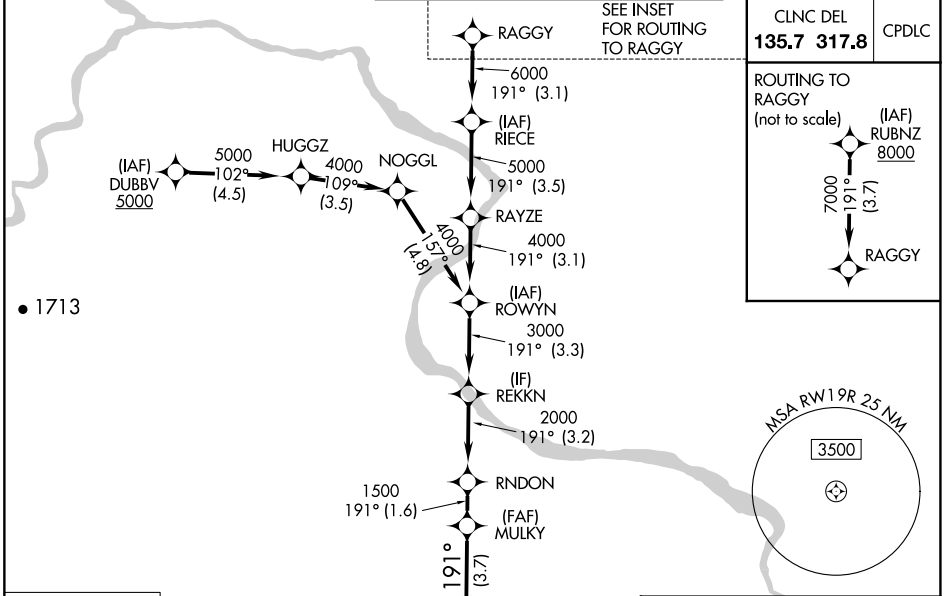
APP CRS	Rwy Idg	9400
191°	TDZE	278
	Apt Elev	312

RNAV (RNP) Z RWY 19R

WASHINGTON DULLES INTL (IAD)

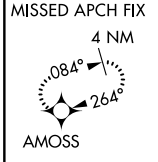
RNP AR APCH - GPS.	ALSIF-2	MISSED APPROACH: Climb to 800 then climbing right turn to 3000 direct AMOSS and hold.
<p>▼ For uncompensated Baro-VNAV systems, procedure NA below -13°C or above 54°C. Simultaneous approach authorized. For inop ALS, increase RNP 0.30 visibility all Cats to RVR 5500.</p>		

D-ATIS	POTOMAC APP CON	DULLES TOWER	GND CON
134.85	120.45 306.925 (241°-330°)	120.1 317.8 (Rwy 1R/19L)	121.9 317.8 (EAST)
	128.525 306.925 (091°-240°)	120.25 348.6 (Rwy 1C/19C)	121.625 348.6 (WEST)
	126.1 338.25 (331°-090°)	134.425 348.6 (Rwy 1L/19R and 12/30)	

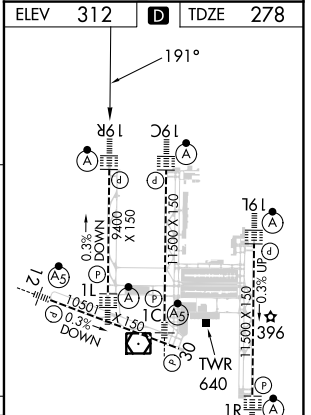


NE-3, 28 NOV 2024 to 26 DEC 2024

NE-3, 28 NOV 2024 to 26 DEC 2024



800	3000	AMOSS	VGSI and RNAV glidepath not coincident (VGSI Angle 3.00/TCH 70).					RAGGY	RUBNZ	
			MULKY	RNDON	REKKN	ROWYN	RAYZE	RIECE	8000	
			1500	2000	3000	4000	5000	6000	7000	
			3.7 NM	1.6 NM	3.2 NM	3.3 NM	3.1 NM	3.5 NM	3.1 NM	3.7 NM
CATEGORY	A		B			C		D		
RNP 0.10 DA	608/26		330 (300-1/2)							
RNP 0.30 DA	658/35		380 (400-5/8)							



AUTHORIZATION REQUIRED		TDZ/CL Rwys 1C, 1L, 1R, 12, 19C and 19R
		REIL Rwy 30
		HIRL all Rwys