

APP CRS	Rwy Idg	11500
011°	TDZE	312
	Apt Elev	312

RNAV (RNP) Z RWY 1R

WASHINGTON DULLES INTL (IAD)

RNP AR APCH - GPS.

ALSF-2

MISSED APPROACH: Climb to 800 then climbing right turn to 3000 direct JCOBY and hold.

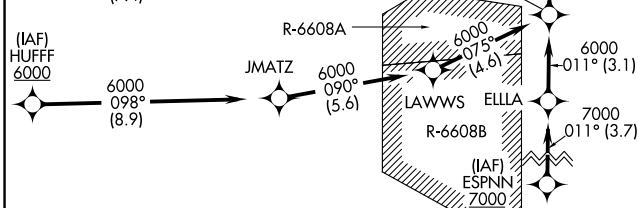
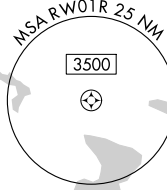
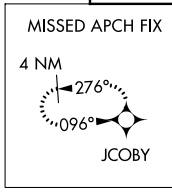
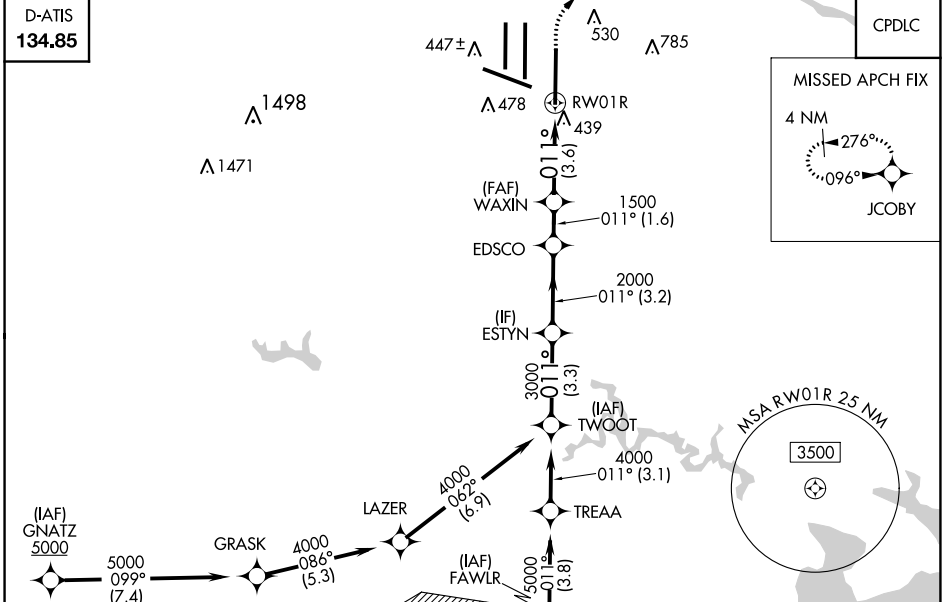
▼ For uncompensated Baro-VNAV systems, procedure NA below -13°C or above 54°C.
 For inop ALS, increase RNP 0.11 all Cats visibility to RVR 4500.
 Simultaneous approach authorized.



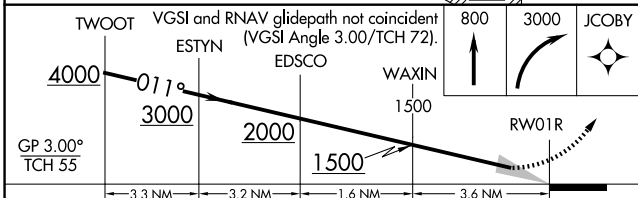
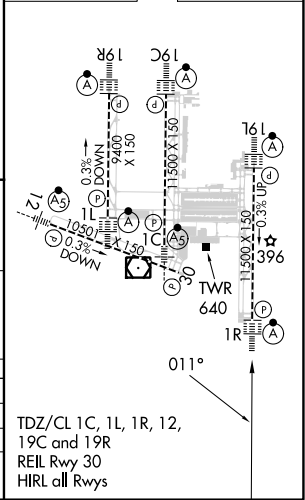
POTOMAC APP CON 120.45 306.925 (241°-330°) 128.525 306.925 (091°-240°) 126.1 338.25 (331°-090°)	DULLES TOWER 120.1 317.8 (Rwy 1R/19L) 120.25 348.6 (Rwy 1C/19C) 134.425 348.6 (Rwys 1L/19R and 12/30)	GND CON 121.9 317.8 (EAST) 121.625 348.6 (WEST)	CLNC DEL 135.7 317.8
---	---	---	--------------------------------

D-ATIS
134.85

CPDLC



ELEV 312	D	TDZE 312
----------	----------	----------



CATEGORY	A	B	C	D
RNP 0.11 DA		625/24	313 (400-½)	
RNP 0.30 DA		770/45	458 (500-¾)	

TDZ/CL 1C, 1L, 1R, 12, 19C and 19R
 REIL Rwy 30
 HIRL all Rwys

AUTHORIZATION REQUIRED

NE-3, 28 NOV 2024 to 26 DEC 2024

NE-3, 28 NOV 2024 to 26 DEC 2024