

WAAS CH <b>40305</b> <b>W19B</b>	APP CRS <b>191°</b>	Rwy ldg <b>11089</b> TDZE <b>272</b> Apt Elev <b>312</b>
--	------------------------	--

# RNAV (GPS) Y RWY 19C

WASHINGTON DULLES INTL (IAD)

RNP APCH - GPS.

Simultaneous approach authorized. LNAV procedure NA during simultaneous operations.  
 Use of FD or AP required during simultaneous operations. For uncompensated Baro-VNAV systems, LNAV/VNAV NA below -13°C or above 54°C.

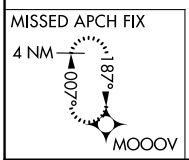
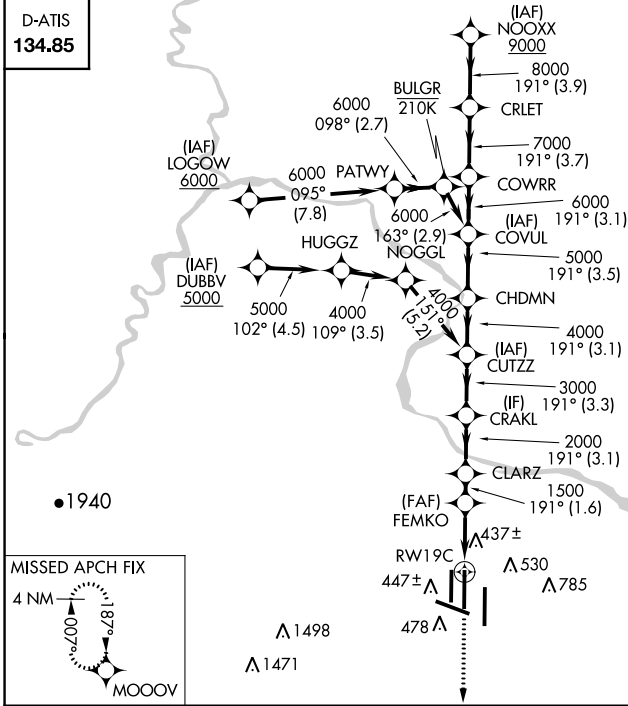


MISSED APPROACH:  
Climb to 3000 direct  
MOOOV and hold.

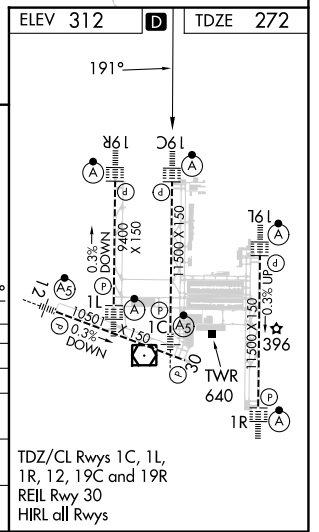
POTOMAC APP CON <b>120.45 306.925</b> (241°-330°) <b>128.525 306.925</b> (091°-240°) <b>126.1 338.25</b> (331°-090°)	DULLES TOWER <b>120.1 317.8</b> (Rwy 1R/19L) <b>120.25 348.6</b> (Rwy 1C/19C) <b>134.425 348.6</b> (Rwys 1L/19R and 12/30)	GND CON <b>121.9 317.8</b> (EAST) <b>121.625 348.6</b> (WEST)	CLNC DEL <b>135.7 317.8</b>
---	---	---	--------------------------------

D-ATIS  
**134.85**

CPDLC



3000	MOOOV	VGSI and RNAV glidepath not coincident (VGSI Angle 3.00/TCH 72).				NOOXX				
		FEMKO	CLARZ	CRAKL	CUTZZ	CHDMN	COVUL	COWRR	CRLET	9000
		1.1 NM to RWY 19C	1.6 NM	3.1 NM	3.3 NM	3.1 NM	3.5 NM	3.1 NM	3.7 NM	3.9 NM
		1500	2000	3000	4000	5000	6000	7000	8000	9000
CATEGORY		A	B			C		D		
LPV DA			472/18			200 (200-1/2)				
LNAV/VNAV DA			700/40			428 (400-3/4)				
LNAV MDA		700/24	428 (400-1/2)			700/40		428 (400-3/4)		
CIRCLING		940-1	628 (700-1)			940-1 3/4		1180-2 3/4		
						628 (700-1 3/4)		868 (900-2 3/4)		



NE-3, 28 NOV 2024 to 26 DEC 2024

NE-3, 28 NOV 2024 to 26 DEC 2024