

WAAS CH 58105 W19A	APP CRS 191°	Rwy ldg 11500 TDZE 302 Apt Elev 312
--	------------------------	--

RNAV (GPS) Y RWY 19L

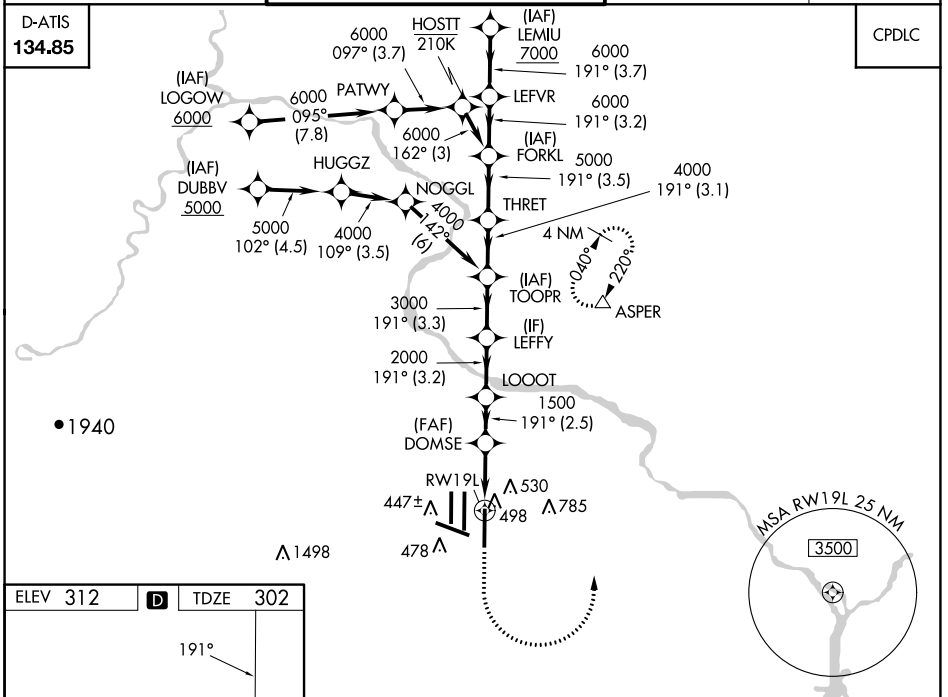
WASHINGTON DULLES INTL (IAD)

RNP APCH - GPS.	ALSIF-2	MISSED APPROACH: Climb to 800 then climbing left turn to 3000 direct ASPER and hold.
<p>Simultaneous approach authorized. LNAV procedure NA during simultaneous operations.</p> <p>For uncompensated Baro-VNAV systems, procedure NA below -13°C or above 54°C.</p> <p>Use of FD or AP required during simultaneous operations.</p> <p>*RVR 1800 authorized with use of FD or AP or HUD to DA.</p>		

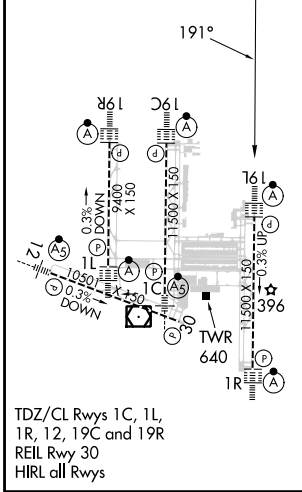
POTOMAC APP CON 120.45 306.925 (241°-330°) 128.525 306.925 (091°-240°) 126.1 338.25 (331°-090°)	DULLES TOWER 120.1 317.8 (Rwys 1R/19L) 120.25 348.6 (Rwys 1C/19C) 134.425 348.6 (Rwys 1L/19R and 12/30)	GND CON 121.9 317.8 (EAST) 121.625 348.6 (WEST)	CLNC DEL 135.7 317.8
---	---	---	--------------------------------

D-ATIS
134.85

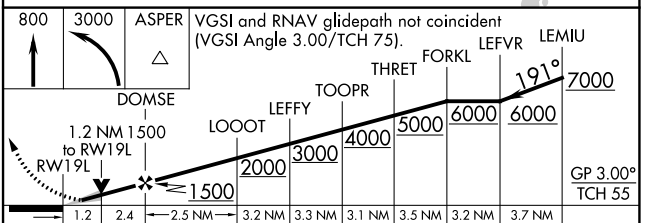
CPDLC



ELEV 312	D	TDZE 302
----------	----------	----------



TDZ/CL Rwys 1C, 1L, 1R, 12, 19C and 19R
REIL Rwy 30
HIRL all Rwys



CATEGORY	A	B	C	D
LPV DA*	502/24 200 (200-½)			
LNAV/VNAV DA	760/45 458 (500-¾)			
LNAV MDA	760/24 458 (500-½)	760/45 458 (500-¾)		
CIRCLING	940-1 628 (700-1)	940-1¾ 628 (700-1¾)	1180-2¾ 868 (900-2¾)	

NE-3, 28 NOV 2024 to 26 DEC 2024

NE-3, 28 NOV 2024 to 26 DEC 2024