

WOOLY TWO DEPARTURE (RNAV)

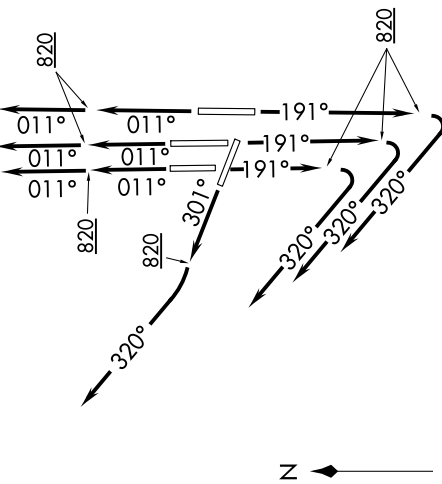
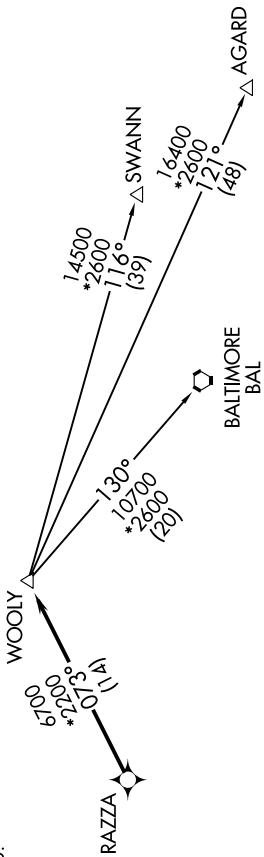
NE-3, 28 NOV 2024 to 26 DEC 2024

- D-ATIS 134.85
- CLNC DEL 135.7 317.8
- CPDIC 121.9 317.8 (EAST)
- GND CON 121.625 348.6 (WEST)
- DULLES TOWER 120.1 317.8 (Rwy 1R/19L)
- 120.25 348.6 (Rwy 1C/19C)
- 134.425 348.6 (Rwys 1L/19R, 12/30)
- POTOMAC DEP CON 125.50 350.2

TAKEOFF MINIMUMS:
Rwys 1L/C/R, 19L/C/R, 30:
Standard with minimum climb
of 500' per NM to 820.

- NOTE: RNAV 1.
- NOTE: DME/DME/IRU or GPS required.
- NOTE: RADAR required.
- NOTE: Turbojets only.

TOP ALTITUDE:
3000



NOTE: Chart not to scale.

DEPARTURE ROUTE DESCRIPTION

TAKEOFF RUNWAYS 1L/C/R: Climb heading 011° to 820, then on heading 011° or as assigned by ATC, expect RADAR vectors to RAZZA, thence

TAKEOFF RUNWAYS 19L/C/R: Climb heading 191° to 820, then right turn on heading 320° or as assigned by ATC, expect RADAR vectors to RAZZA, thence

TAKEOFF RUNWAY 30: Climb heading 301° to 820, then right turn on heading 320° or as assigned by ATC, expect RADAR vectors to RAZZA, thence

. . . . on track 073° to WOOLY, then on assigned transition. Maintain 3000. Expect clearance to filed altitude within ten (10) minutes after departure.

AGARD TRANSITION (WOOLY2.AGARD)
BALTIMORE TRANSITION (WOOLY2.BAL)
SWANN TRANSITION (WOOLY2.SWANN)

NE-3, 28 NOV 2024 to 26 DEC 2024