

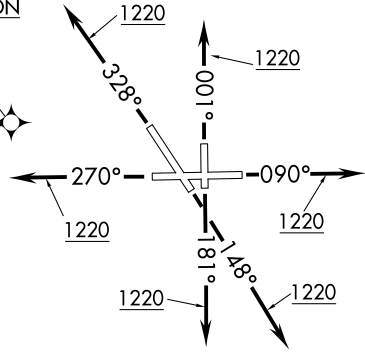
OBENE THREE DEPARTURE (RNAV) (OBENE3.OBENE) 08NOV18 CHICAGO/AURORA, ILLINOIS AURORA MUNI (ARR) AURORA MUNI (ARR) CHICAGO/AURORA, ILLINOIS

(OBENE3.OBENE) 18312 AURORA MUNI (ARR) CHICAGO/AURORA, ILLINOIS (OBENE3.OBENE) 18312 AURORA MUNI (ARR) CHICAGO/AURORA, ILLINOIS

**TOP ALTITUDE:
3000**

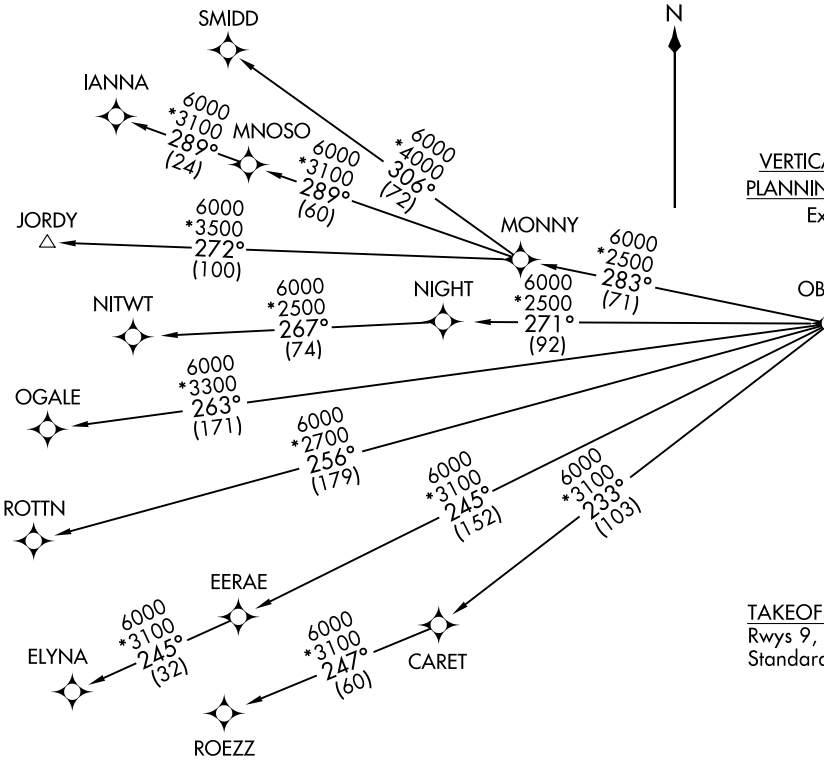
ATIS 125.85
GND CON 121.7
AURORA TOWER* 120.6
CHICAGO DEP CON 133.5 349.0

OREOS
VERTICAL NAVIGATION
PLANNING INFORMATION
Expect 13000



TAKEOFF MINIMUMS
Rwys 9, 15, 18, 27, 33, 36:
Standard with minimum climb of 500' per NM to 1220.

- NOTE: RADAR required.
- NOTE: DME/DME/IRU or GPS required.
- NOTE: RNAV 1.
- NOTE: Turbojet departures maintain 250K until advised by ATC.



NOTE: Chart not to scale. (NARRATIVE ON FOLLOWING PAGE)



DEPARTURE ROUTE DESCRIPTION

TAKEOFF RUNWAY 9: Climb heading 090° to 1220, then continue climb on 090° heading or as assigned by ATC, for vectors to OREOS. Thence

TAKEOFF RUNWAY 15: Climb heading 148° to 1220, then continue climb on 148° heading or as assigned by ATC, for vectors to OREOS. Thence

TAKEOFF RUNWAY 18: Climb heading 181° to 1220, then continue climb on 181° heading or as assigned by ATC, for vectors to OREOS. Thence

TAKEOFF RUNWAY 27: Climb heading 270° to 1220, then continue climb on 270° heading or as assigned by ATC, for vectors to OREOS. Thence

TAKEOFF RUNWAY 33: Climb heading 328° to 1220, then continue climb on 328° heading or as assigned by ATC, for vectors to OREOS. Thence

TAKEOFF RUNWAY 36: Climb heading 001° to 1220, then continue climb on 001° heading or as assigned by ATC, for vectors to OREOS. Thence

. . . . on depicted route to OBENE, maintain 3000. Expect filed altitude 10 minutes after departure.

ELYNA TRANSITION (OBENE3.ELYNA)

IANNA TRANSITION (OBENE3.IANNA)

JORDY TRANSITION (OBENE3.JORDY)

MNOSO TRANSITION (OBENE3.MNOSO): For Minneapolis terminal area arrivals or assigned by ATC.

NITWT TRANSITION (OBENE3.NITWT)

OGALE TRANSITION (OBENE3.OGALE)

ROTTN TRANSITION (OBENE3.ROTTN)

ROEZZ TRANSITION (OBENE3.ROEZZ)

SMIDD TRANSITION (OBENE3.SMIDD)

EC-3, 28 NOV 2024 to 26 DEC 2024

EC-3, 28 NOV 2024 to 26 DEC 2024