

LOC I-PWWT 111.1	APP CRS 197°	Rwy Idg TDZE 6000 442 Apt Elev 444
----------------------------	------------------------	---

ILS or LOC RWY 20

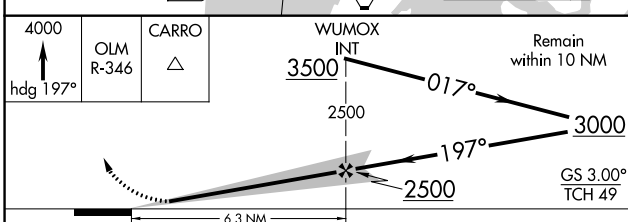
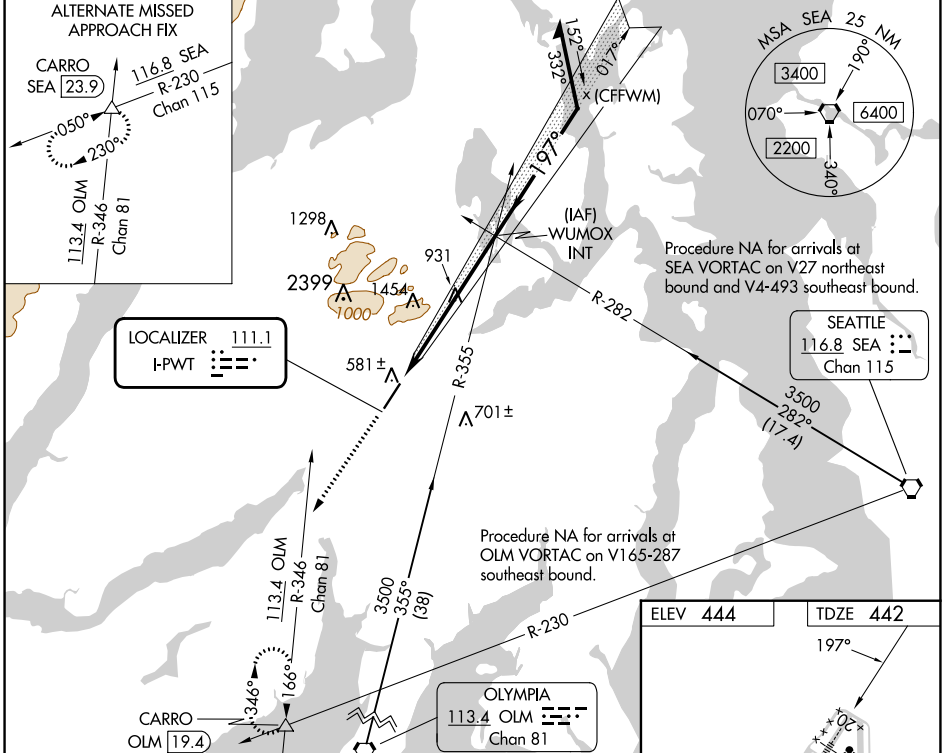
BREMERTON NTL (PWT)

⚠ Circling NA for Cats C and D west of Rwy 2-20. When local altimeter setting not received, use Seattle-Tacoma Intl altimeter setting and increase all DA 45 feet, all MDA 60 feet and increase S-LOC 20 Cat C and D visibility 1/2 SM, Circling Cat A, C and D visibility 1/2 SM. For inop ALS, increase S-LOC 20 Cat C and D visibility to 2 SM. For inop ALS, when using Seattle-Tacoma Intl altimeter setting, increase S-LOC 20 Cat C and D visibility to 2 1/2 SM.

MALSR
AS

MISSED APPROACH: Climb to 4000 on heading 197° and OLM VORTAC R-346 to CARRO INT/OLM 19.4 DME and hold, continue climb-inhold to 4000.

AWOS-3PT 121.2	SEATTLE APP CON 120.1 254.4 269.125	CLNC DEL 127.1	UNICOM 123.05 (CTAF) 0
--------------------------	---	--------------------------	----------------------------------



ELEV 444	TDZE 442
197°	
6000 x 150	
REIL Rwy 2 HIRL Rwy 2-20	
FAF to MAP 6.3 NM	
Knots	60 90 120 150 180
Min:Sec	6:18 4:12 3:09 2:31 2:06

CATEGORY	A	B	C	D
S-ILS 20		642-1/2	200 (200-1/2)	
S-LOC 20	1200-1/2 758 (800-1/2)	1200-3/4 758 (800-3/4)	1200-1 3/4 758 (800-1 3/4)	758 (800-1 3/4)
C CIRCLING	1200-1 756 (800-1)	1200-1 1/4 756 (800-1 1/4)	1200-2 1/4 756 (800-2 1/4)	1240-2 1/2 796 (800-2 1/2)

NW-1, 28 NOV 2024 to 26 DEC 2024

NW-1, 28 NOV 2024 to 26 DEC 2024