

WAAS CH 45604 W15A	APP CRS 156°	Rwy Idg 5950 TDZE 4264 Apt Elev 4317
--	------------------------	---

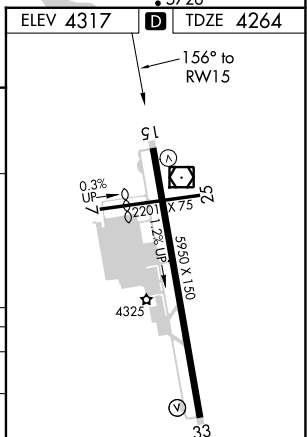
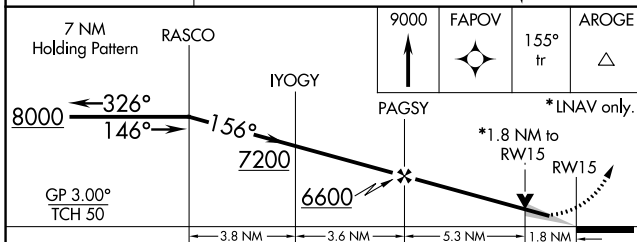
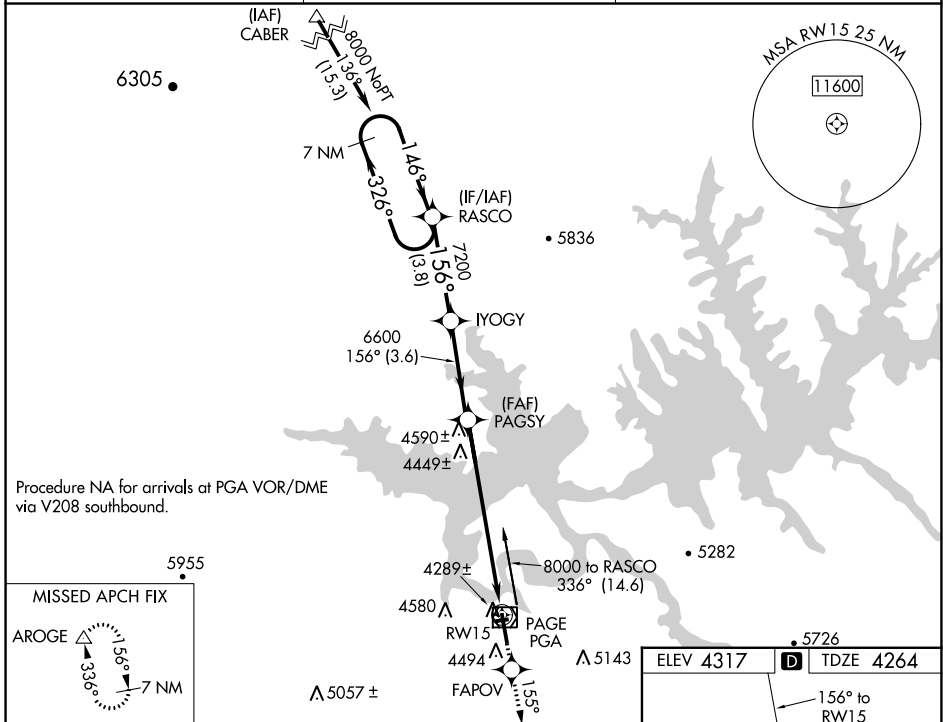
RNAV (GPS) RWY 15

PAGE MUNI (PGA)

▼ For uncompensated Baro-VNAV systems, LNAV/VNAV NA below -23°C (-9°F) or above 41°C (105°F).
DME/DME RNP-0.3 NA. Circling NA to Rwy 7-25

MISSED APPROACH: Climb to 9000 direct FAPOV and via 155° track to AROGE and hold, continue climb-in-hold to 9000.

ASOS 120.625	DENVER CENTER 127.55 256.875	UNICOM 122.8 (CTAF) 0
------------------------	--	---------------------------------



CATEGORY	A	B	C	D
LPV DA	4599-1¼		335 (300-1¼)	
LNAV/VNAV DA	4670-1½		406 (400-1½)	
LNAV MDA	4860-1	596 (600-1)	4860-1½	4860-1¾
			596 (600-1½)	596 (600-1¾)
CIRCLING	4860-1	4880-1	5080-2¼	5360-3
	543 (600-1)	563 (600-1)	763 (800-2¼)	1043 (1100-3)

REIL Rws 15 and 33 0

MIRL Rwy 15-33 0

SW-4, 28 NOV 2024 to 26 DEC 2024

SW-4, 28 NOV 2024 to 26 DEC 2024