

WAAS CH 45502 W15A	APP CRS 154°	Rwy Idg 10702 TDZE 16 Apt Elev 17
--	------------------------	--

RNAV (GPS) RWY 15

CHENNAULT INTL (CWF')

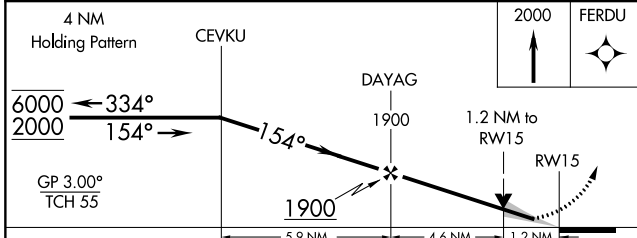
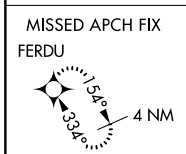
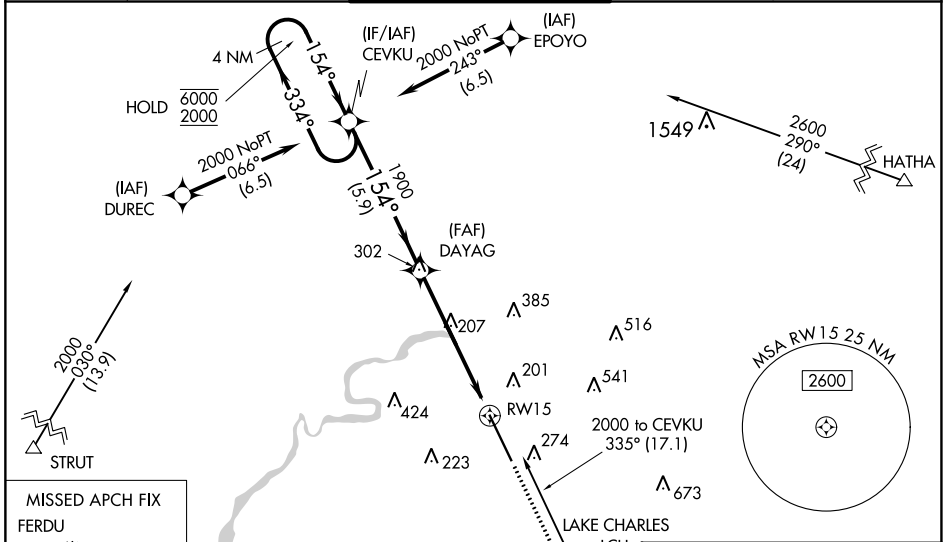
RNP APCH - GPS

Baro-VNAV and VDP NA when using Lake Charles Rgnl altimeter setting. For uncompensated Baro-VNAV systems, procedure NA below -1.5°C or above 54°C. When local altimeter setting not received, use Lake Charles Rgnl altimeter ASR setting and increase LPV DA to 232 feet; increase LNAV/VNAV DA to 523 feet; increase all MDAs 20 feet and LNAV visibility Cat C/D 1/8 SM, and Circling visibility Cat D 1/4 SM. For inop ALS, increase LNAV/VNAV all Cats to 1 1/8 SM. For inop ALS when using Lake Charles Rgnl altimeter setting increase LNAV/VNAV visibility all Cats to 1 1/8 SM.

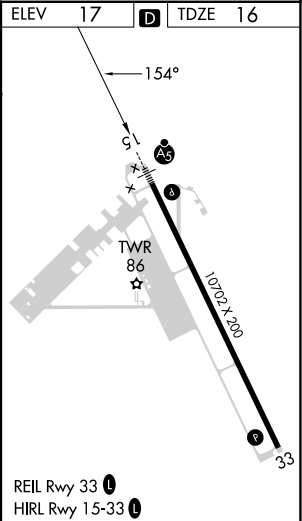


MISSED APPROACH: Climb to 2000 direct FERDU and hold.

ATIS 120.0	LAKE CHARLES APP CON* 119.8 282.3	CHENNAULT TOWER* 124.2 (CTAF) 290.4	GND CON 121.65 275.8	UNICOM 122.95
----------------------	---	---	--------------------------------	-------------------------



CATEGORY	A	B	C	D
LPV DA		216-1/2	200 (200-1/2)	
LNAV/VNAV DA		507-1	491 (500-1)	
LNAV MDA	460-1/2	444 (500-1/2)	460-3/4	444 (500-3/4)
CIRCLING	640-1	623 (700-1)	640-1 3/4 623 (700-1 3/4)	740-2 1/4 723 (800-2 1/4)



SC-4, 28 NOV 2024 to 26 DEC 2024

SC-4, 28 NOV 2024 to 26 DEC 2024