

VORTAC SBV 110.4 Chan 41	APP CRS 081°	Rwy Idg TDZE Apt Elev	N/A N/A 420
---------------------------------------	------------------------	-----------------------------	--

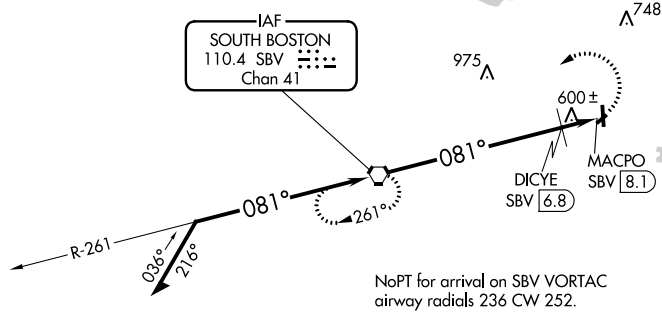
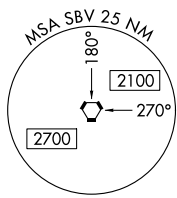
VOR-A

WILLIAM M TUCK (W78)

⚠ Night landing: Rwy 19 NA. Helicopter visibility reduction below 1 SM NA. When local altimeter setting not received, use Danville altimeter setting and increase all MDA 80 feet; increase all Cats visibility and DICYE fix minimums Cat C visibility ¼ mile. Circling NA to Rwy 6-24.

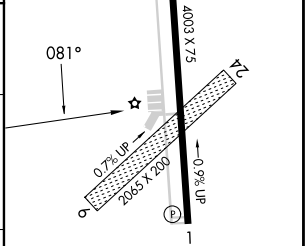
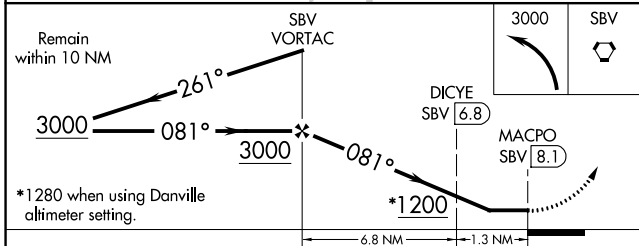
MISSED APPROACH:
Climbing left turn to 3000
direct SBV VORTAC and hold.

AWOS-3 119.425	WASHINGTON CENTER 124.05 352.0	UNICOM 122.8 (CTAF) 0
--------------------------	--	---------------------------------



NE-3, 28 NOV 2024 to 26 DEC 2024

NE-3, 28 NOV 2024 to 26 DEC 2024



CIRCLING	1200-1	780 (800-1)	1200-2¼ 780 (800-2¼)	NA	
DICYE FIX MINIMUMS					
CIRCLING	960-1	540 (600-1)	1060-1¾ 640 (700-1¾)	NA	
FAF to MAP 8.1 NM					
Knots	60	90	120	150	180
Min:Sec	8:06	5:24	4:03	3:14	2:42

VOR-A