

APP CRS	Rwy Idg	<b>7000</b>
<b>272°</b>	TDZE	<b>701</b>
	Apt Elev	<b>703</b>

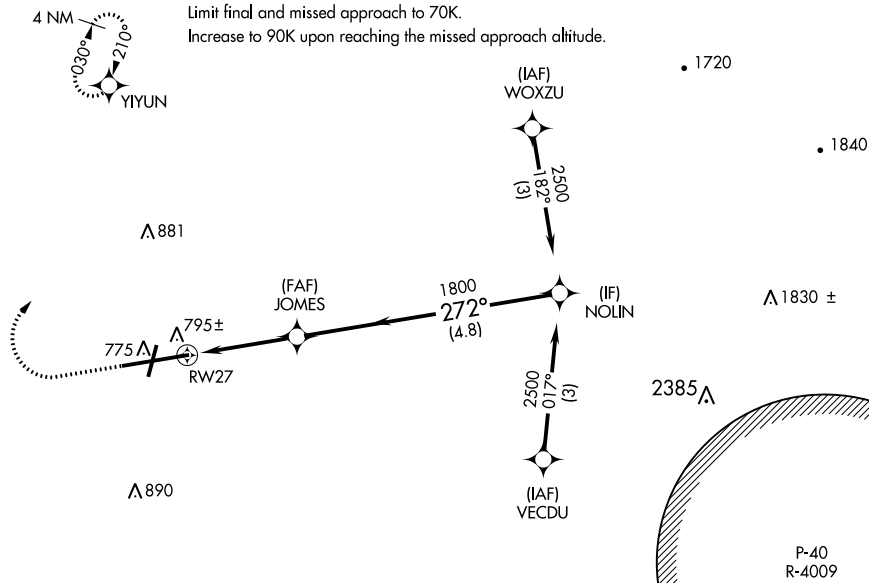
# COPTER RNAV (GPS) RWY 27

HAGERSTOWN RGNL/RICHARD A HENSON FLD (HGR)

<p>▼ Inop table does not apply. DME/DME RNP-0.3 NA. VDP NA with Martinsburg altimeter setting. When local altimeter setting not received, use Martinsburg altimeter setting and increase MDA 80 feet.</p>	<p>MALSRL</p>	<p>MISSED APPROACH: Climb to 1200 then climbing right turn to 2500 direct YIYUN and hold.</p>
---	---------------	---

ASOS <b>126.375</b>	POTOMAC APP CON <b>126.825 239.025</b>	HAGERSTOWN TOWER ★ <b>120.3 (CTAF) 0 225.4</b>	GND CON <b>120.8</b>	UNICOM <b>122.95</b>
------------------------	---	---	-------------------------	-------------------------

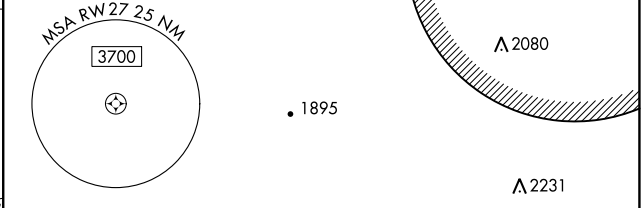
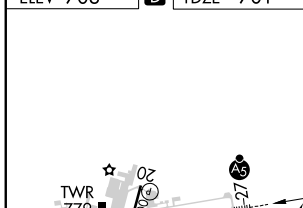
Limit initial and intermediate approach to 90K.  
Limit final and missed approach to 70K.  
Increase to 90K upon reaching the missed approach altitude.



NE-3, 28 NOV 2024 to 26 DEC 2024

NE-3, 28 NOV 2024 to 26 DEC 2024

ELEV 703	<b>D</b>	TDZE 701
----------	----------	----------



1200	2500	YIYUN	VGSI and descent angles not coincident (VGSI Angle 3.00/TCH 55).
↑	↘	✧	∠ 4.98° HCH 55
		JOMES	NOLIN
<p>1 NM to RWY 27</p>		1800	2500
<p>1 NM 1 NM 4.8 NM</p>		COPTER	
CATEGORY	COPTER		
LNAV MDA	1060-½ 359 (400-½)		