


VORTAC LAX	APP CRS	Rwy Idg	4194
113.6	261°	TDZE	63
Chan 83		Apt Elev	66

VOR RWY 25

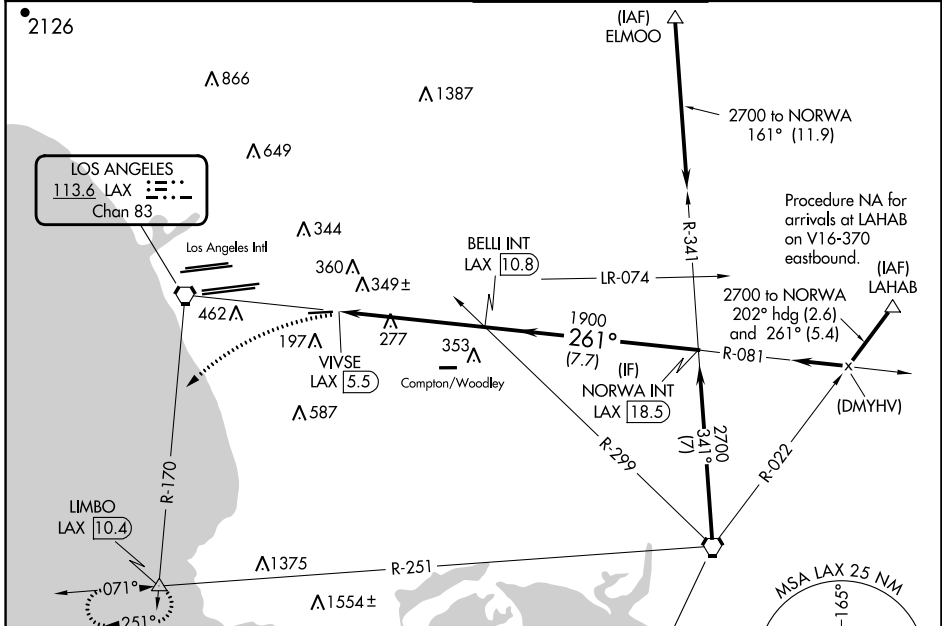
JACK NORTHROP FLD/HAWTHORNE MUNI (HHR)

⚠ Circling NA north of Rwy 7-25. Rwy 25 helicopter visibility reduction below 1 SM NA. When local altimeter setting not received, use Los Angeles Intl altimeter setting. Circling Rwy 7 NA at night. Inop table does not apply to S-25 Cats A and B. For inop ALS, increase S-25 Cats C/D visibility to 1/8.

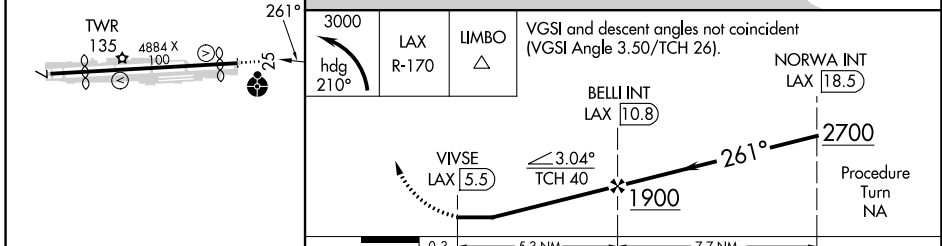
ODALS 

MISSED APPROACH: Climbing left turn to 3000 via heading 210° and LAX VORTAC R-170 to LIMBO INT/LAX 10.4 DME and hold.

ATIS 118.4	SOCAL APP CON 124.9 269.0	HAWTHORNE TOWER ★ 121.1 (CTAF) 0 257.8	GND CON 125.1
----------------------	-------------------------------------	--	-------------------------



ELEV 66	TDZE 63
---------	---------



CATEGORY	A	B	C	D
S-25	620-1	557 (600-1)	620-1 ³ / ₈	557 (600-1 ³ / ₈)
C CIRCLING	620-1	554 (600-1)	780-2 714 (800-2)	780-2 ¹ / ₄ 714 (800-2 ¹ / ₄)

MIRL Rwy 7-25 **⓪**

FAF to MAP 5.3 NM

Knots	60	90	120	150	180
Min:Sec	5:18	3:32	2:39	2:07	1:46

SW-3, 28 NOV 2024 to 26 DEC 2024

SW-3, 28 NOV 2024 to 26 DEC 2024