

| | | |
|--|------------------------|---|
| WAAS CH 97516 W04A | APP CRS 039° | Rwy Idg TDZE 668 Apt Elev 674 |
|--|------------------------|---|

RNAV (GPS) RWY 4

BATTEN INTL (RAC)

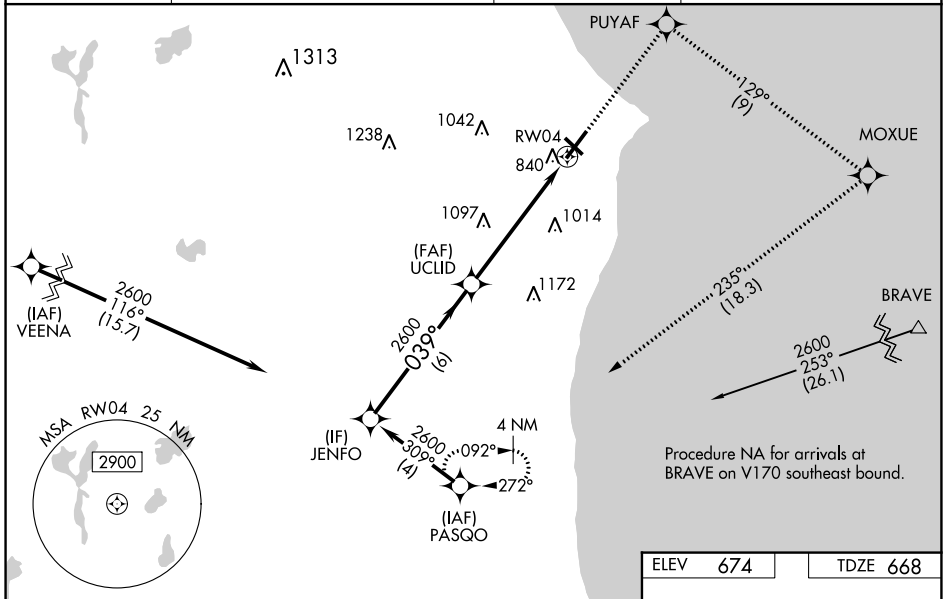
⚠ Baro-VNAV NA when using General Mitchell Intl altimeter setting. For uncompensated Baro-VNAV systems, LNAV/VNAV NA below -20°C (-4°F) or above 54°C (130°F). DME/DME RNP-0.3 NA. VDP NA when using General Mitchell Intl altimeter setting. When local altimeter setting not received, use General Mitchell Intl altimeter setting; increase LPV DA to 1023 and all visibilities 1/8 SM; increase LNAV/VNAV DA to 1135 and all visibilities 1/8 SM; increase all MDA 40 feet and visibility Cat C and D 1/8 SM. Circling Rwy 14 NA at night. Rwy 4 helicopter visibility reduction below 3/8 SM NA. Inop table does not apply.

MALSF



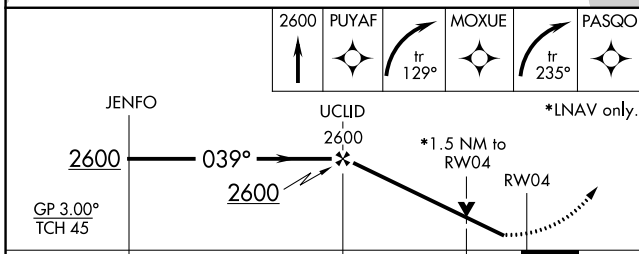
MISSED APPROACH:
Climb to 2600 direct PUYAF and right turn on track 129° to MOXUE and right turn on track 235° to PASQO and hold.

| | | | |
|------------------------|---|---------------------------|--|
| ASOS 121.425 | MILWAUKEE APP CON 135.875 317.725 | CLNC DEL 120.15 | UNICOM 123.075 (CTAF) 📻 |
|------------------------|---|---------------------------|--|



EC-3, 28 NOV 2024 to 26 DEC 2024

EC-3, 28 NOV 2024 to 26 DEC 2024



| CATEGORY | A | B | C | D |
|-------------------|--------|-------------|-----------------------|-------------------------|
| LPV DA | | 988-1 | 320 (400-1) | |
| LNAV/VNAV DA | | 1100-1½ | 432 (500-1½) | |
| LNAV MDA | 1180-1 | 512 (600-1) | 1180-1¾ | 512 (600-1¾) |
| C CIRCLING | 1180-1 | 506 (600-1) | 1380-2 706 (800-2) | 1380-2¼ 706 (800-2¼) |

