

(BIMMR3.BIMMR) 22139

AL-5124 (FAA)

GREENVILLE SPARTANBURG INTL (GSP)  
GREER, SOUTH CAROLINA

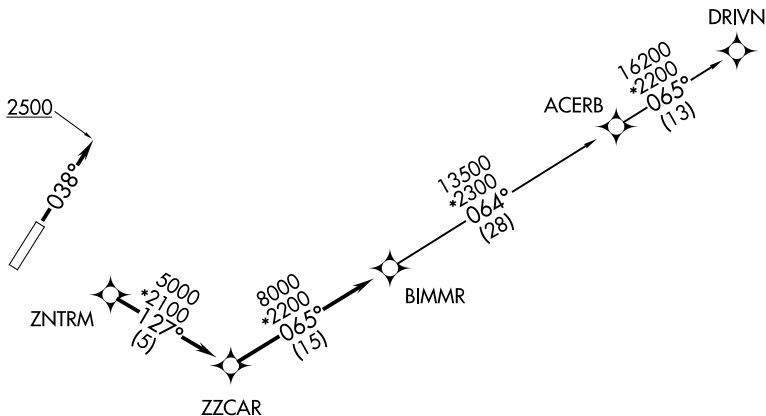
# BIMMR THREE DEPARTURE (RNAV)

ATIS  
134.25  
GND CON  
121.9  
GREER TOWER\*  
120.1 251.15  
UNICOM  
122.95  
GREER DEP CON\*  
119.4 350.2

RNAV 1 - DME/DME/IRU or GPS.

RADAR required.

**TOP ALTITUDE:**  
**5000**



### TAKEOFF MINIMUMS

Rwys 4, 22: Standard.

NOTE: Do not exceed 250K until advised by ATC.

NOTE: For turbojets only.

NOTE: Chart not to scale.



### DEPARTURE ROUTE DESCRIPTION

TAKEOFF RUNWAY 4: Climb on heading 038° to 2500 before turning west or northwest for RADAR vectors to ZNTRM, thence. . . .

TAKEOFF RUNWAY 22: Climb on assigned heading for RADAR vectors to ZNTRM, thence. . . .

. . . .on depicted route to BIMMR. Then on assigned transition. Maintain 5000. Expect clearance to filed altitude within 10 minutes after departure.

ACERB TRANSITION (BIMMR3.ACERB)

DRIVN TRANSITION (BIMMR3.DRIVN)

# BIMMR THREE DEPARTURE (RNAV)

(BIMMR3.BIMMR) 19MAY22

GREER, SOUTH CAROLINA  
GREENVILLE SPARTANBURG INTL (GSP)

SE-2, 28 NOV 2024 to 26 DEC 2024

SE-2, 28 NOV 2024 to 26 DEC 2024