

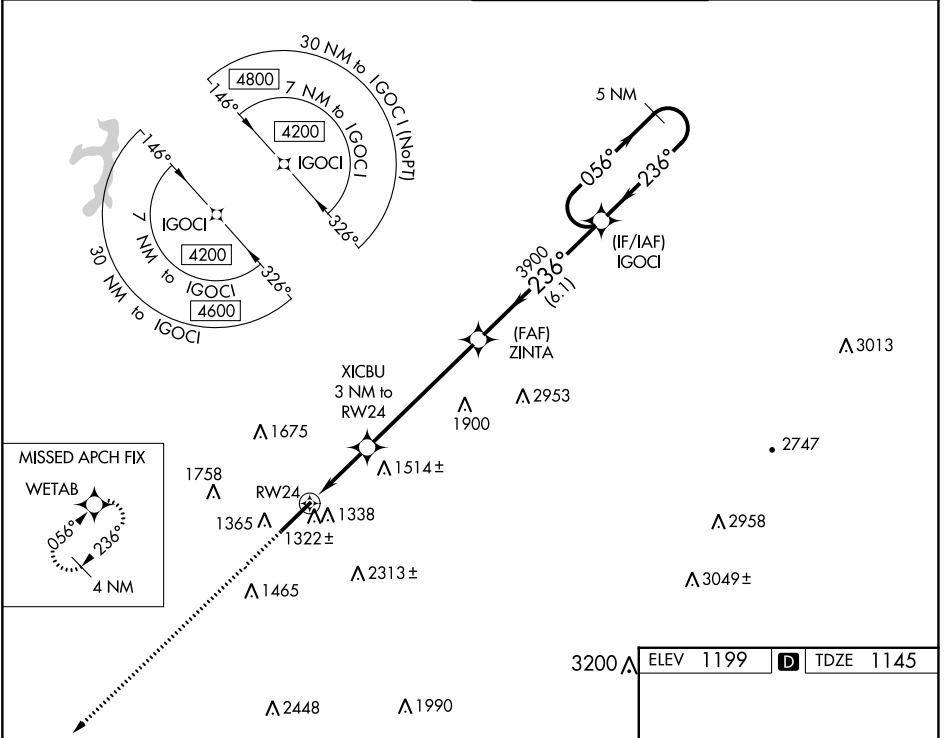
WAAS CH 70499 W24A	APP CRS 236°	Rwy Idg TDZE Apt Elev	7372 1145 1199
--	------------------------	-----------------------------	---

RNAV (GPS) RWY 24

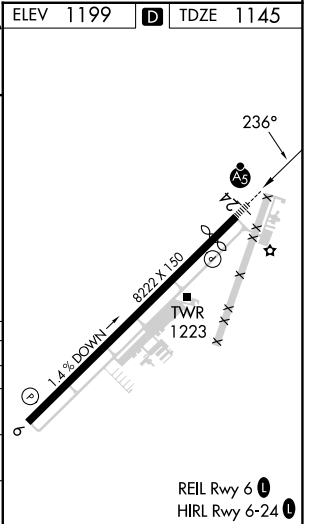
ARNOLD PALMER RGNL (LBE)

<p>For uncompensated Baro-VNAV systems, LNAV/VNAV NA below -17°C (2°F) or above 54°C (130°F). Circling NA southeast of Rwy 6-24. DME/DME RNP-0.3 NA.</p>	<p>MALSR</p>	<p>MISSED APPROACH: Climb to 4200 direct WETAB and hold, continue climb-in-hold to 4200.</p>
	<p>GPS</p>	

<p>ATIS 118.375</p>	<p>JOHNSTOWN APP CON★ 121.2 299.2</p>	<p>PALMER TOWER★ 125.0 (CTAF) 0</p>	<p>GND CON 121.8</p>
--------------------------------	--	--	---------------------------------



4200	WETAB	5 NM Holding Pattern	
*LNAV only.		ZINTA	IGOCI
		XICBU 3 NM to RWY 24	3900
		RWY 24	2140
			GP 3.00° TCH 55
		1.2	1.8 NM
		5.5 NM	6.1 NM
CATEGORY	A	B	C
LPV DA		1345 - 1/2	200 (200 - 1/2)
LNAV/VNAV DA		1498 - 3/4	353 (300 - 3/4)
LNAV MDA	1580 - 1/2	435 (400 - 1/2)	1580 - 3/4 435 (400 - 3/4)
CIRCLING	1740 - 1 541 (600-1)	1780 - 1 581 (600-1)	2060 - 2 1/2 861 (900-2 1/2) 2060 - 2 3/4 861 (900-2 3/4)



NE-4, 28 NOV 2024 to 26 DEC 2024

NE-4, 28 NOV 2024 to 26 DEC 2024