

WAAS CH <b>63139</b> <b>W11A</b>	APP CRS <b>111°</b>	Rwy Idg TDZE Apt Elev	<b>4000</b> <b>775</b> <b>777</b>
--	------------------------	-----------------------------	---

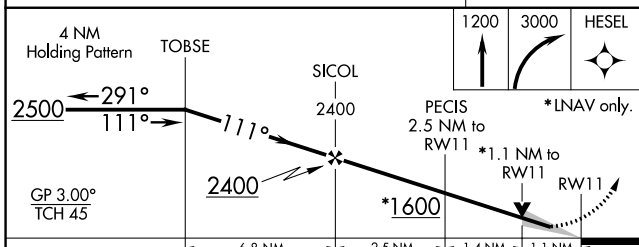
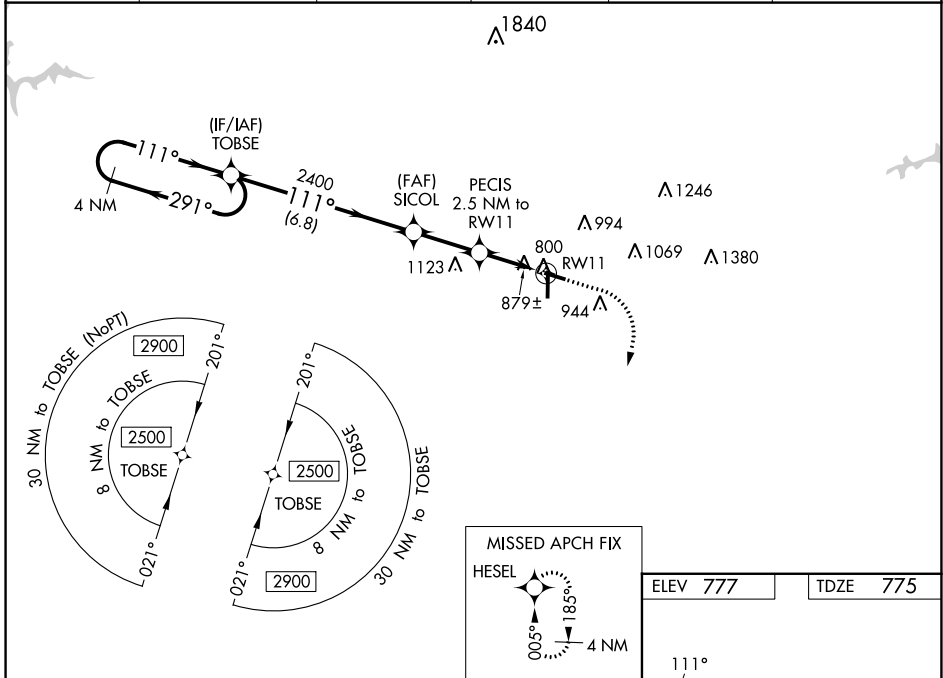
# RNAV (GPS) RWY 11

AUBURN UNIVERSITY RGNL (AUO)

**⚠** For uncompensated Baro-VNAV systems, LNAV/VNAV NA below -16°C (4°F) or above 54°C (130°F). Baro-VNAV and VDP NA when using Columbus altimeter setting.  
**⚠** DME/DME RNP-0.3 NA. When local altimeter setting not received, use Columbus altimeter setting: increase LPV DA to 1138 feet and visibility all Cats ¼ SM; increase LNAV/VNAV DA to 1173 feet and visibility all Cats ⅜ SM; increase all MDA 120 feet and LNAV Cats C/D and Circling Cat C visibility ½ SM and Circling Cat D visibility ⅜ SM.

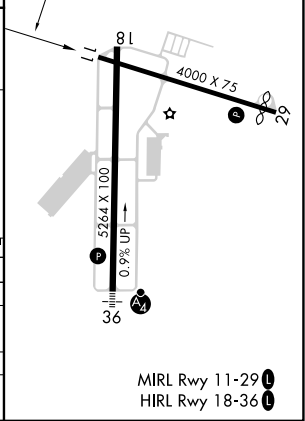
**MISSED APPROACH:**  
 Climb to 1200 then climbing right turn to 3000 direct HESEL and hold.

AWOS-3PT <b>132.575</b>	ATLANTA APP CON ★ <b>125.5 323.1</b>	AUBURN TOWER ★ <b>123.875</b>	GND CON ★ <b>121.625</b>	CLNC DEL <b>118.7</b> (When twr closed)	UNICOM <b>123.0</b> (CTAF) <b>0</b>
----------------------------	---	----------------------------------	-----------------------------	---	--



ELEV 777	TDZE 775
----------	----------

CATEGORY	A	B	C	D
LPV DA		1025-1	250 (300-1)	
LNAV/VNAV DA		1060-1	285 (300-1)	
LNAV MDA	1160-1	385 (400-1)	1160-1½	385 (400-1½)
<b>C</b> CIRCLING	1280-1 503 (600-1)	1360-1 583 (600-1)	1380-1¾ 603 (700-1¾)	1480-2¼ 703 (800-2¼)



MIRL Rwy 11-29 **0**  
 HIRL Rwy 18-36 **0**

SE-4, 28 NOV 2024 to 26 DEC 2024

SE-4, 28 NOV 2024 to 26 DEC 2024