

LOC I-JAN <b>110.5</b>	APP CRS <b>159°</b>	Rwy Idg <b>8500</b>
		TDZE <b>312</b>
		Apt Elev <b>346</b>

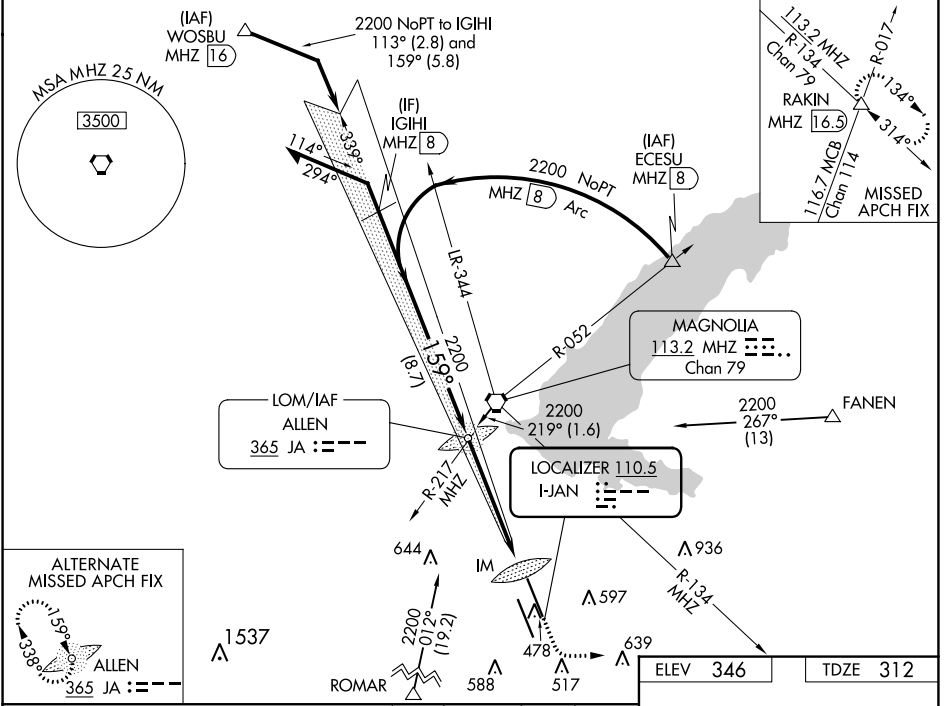
# ILS RWY 16L (CAT II & III)

## JACKSON-MEDGAR WILEY EVERS INTL (JAN)

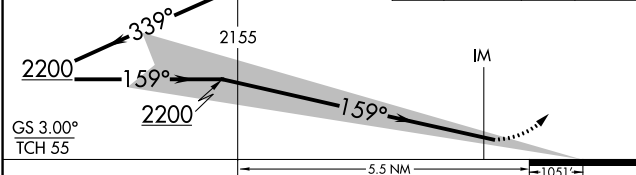
**ALSF-2** MISSED APPROACH: Climb to 800 then climbing left turn to 3000 on heading 090° and MHz VORTAC R-134 to RAKIN INT/MHZ 16.5 DME and hold.

**ASR** When control tower closed, procedure NA.  
When local altimeter setting not received, procedure NA.

ATIS <b>121.05</b>	JACKSON APP CON * <b>123.9 317.7</b>	JACKSON TOWER * <b>120.9 (CTAF) 0 352.0</b>	GND CON <b>121.7 348.6</b>	UNICOM <b>122.95</b>
-----------------------	---	--	-------------------------------	-------------------------

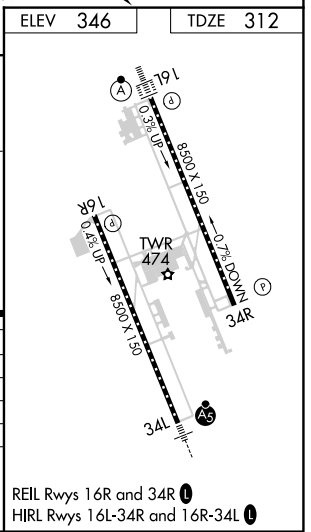


VGSI and ILS glidepath not coincident (VGSI Angle 3.00/TCH 71).	800	3000	MHZ	RAKIN
Remain within 10 NM	JA	hdg	R-134	Δ
LOM		090°		



CATEGORY	A	B	C	D
S-ILS 16L		CAT II RA 119/12 100 DA 412		
S-ILS 16L		CAT IIIA RVR 07		
S-ILS 16L		CAT IIIB RVR 06		
S-ILS 16L		CAT IIIC NA		

**CATEGORY II & III ILS - SPECIAL AIRCREW & AIRCRAFT CERTIFICATION REQUIRED**



SC-4, 28 NOV 2024 to 26 DEC 2024

SC-4, 28 NOV 2024 to 26 DEC 2024