

MHZ VORTAC <b>113.2</b> Chan <b>79</b>	APP CRS <b>175°</b>	Rwy ldg <b>8500</b> TDZE <b>320</b> Apt Elev <b>346</b>
--	------------------------	---

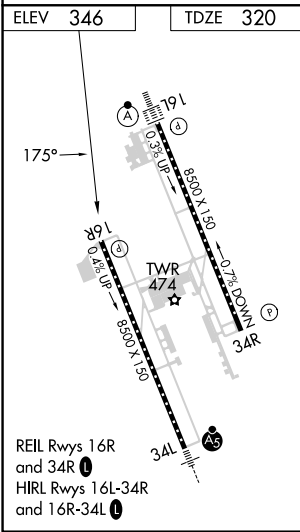
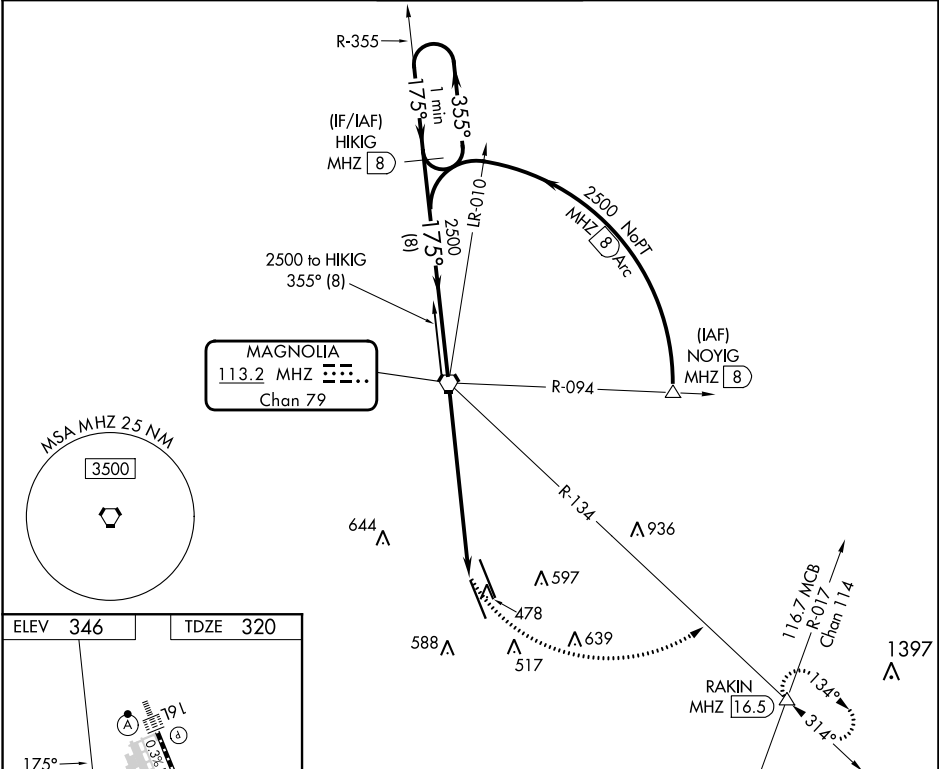
# VOR/DME or TACAN RWY 16R

JACKSON-MEDGAR WILEY EVERS INTL (JAN)

**⚠** VDP NA with Hawkins fld altimeter setting. When local altimeter setting not received, use Hawkins fld altimeter setting and increase all MDA 20 feet; increase S-16R Cats C/D/E visibility 1/8 mile. Circling NA for Cat E SW of Rwy 16R-34L. Helicopter visibility reduction below 3/4 SM NA.

**MISSED APPROACH:** Climbing left turn to 3000 on heading 103° and MHZ VORTAC R-134 to RAKIN INT/ MHZ 16.5 DME and hold.

ATIS <b>121.05</b>	JACKSON APP CON ★ <b>123.9 317.7</b>	JACKSON TOWER ★ <b>120.9 (CTAF) 352.0</b>	GND CON <b>121.7 348.6</b>	UNICOM <b>122.95</b>
-----------------------	---	--	-------------------------------	-------------------------



One Minute Holding Pattern	VGSI and descent angles not coincident (VGSI Angle 3.00/TCH 80).		3000	RAKIN MHZ R-134 △	
			hdg 103°		
	HIKIG MHZ 8	MHZ VORTAC	MHZ 5.6	MHZ 7.1	
	2500	2500	2500		
	355°	175°	175°		
	8 NM	5.5 NM	1.6		
CATEGORY	A	B	C	D	E
S-16R	880-1	560 (600-1)	880-1 1/2	560 (600-1 1/2)	
CIRCLING	880-1 534 (600-1)	900-1 554 (600-1)	900-1 1/2 554 (600-1 1/2)	960-2 614 (700-2)	1040-2 1/2 694 (700-2 1/2)

SC-4, 28 NOV 2024 to 26 DEC 2024

SC-4, 28 NOV 2024 to 26 DEC 2024