

WAAS CH 61343 W12A	APP CRS 118°	Rwy Idg TDZE Apt Elev	5400 897 919
--	------------------------	-----------------------------	---

RNAV (GPS) RWY 12

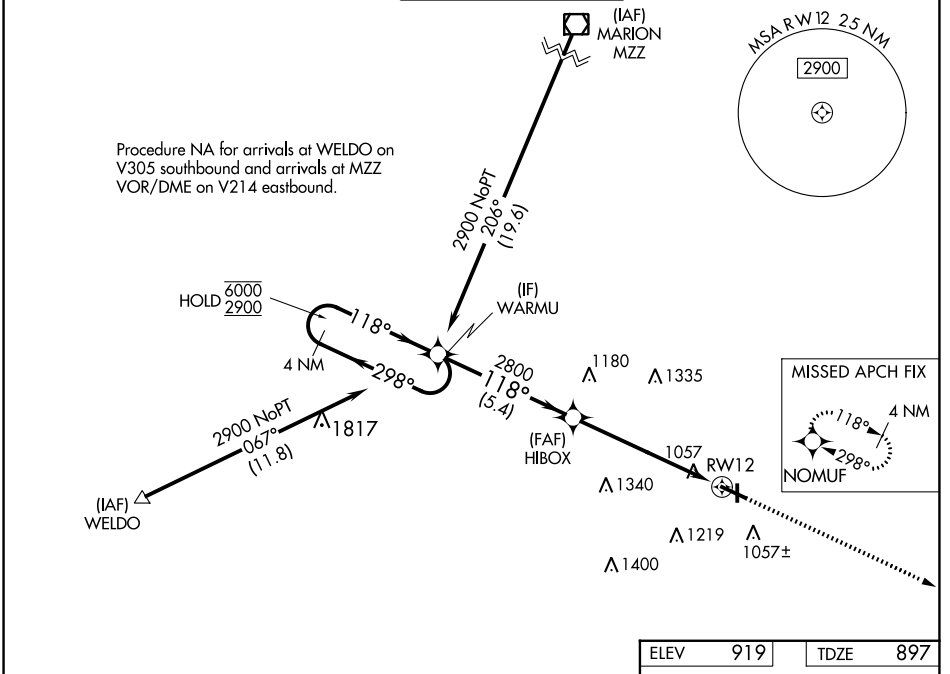
ANDERSON MUNI-DARLINGTON FLD (A1D)

RNP APCH.

▽ For uncompensated Baro-VNAV systems, procedure NA below -16°C or above 54°C.

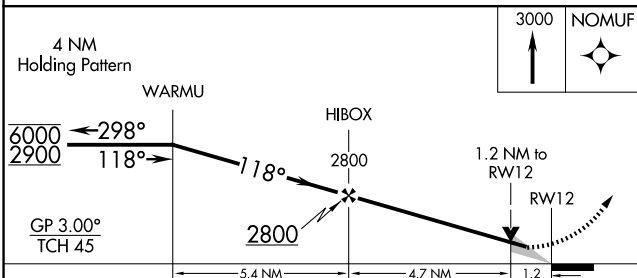
MISSED APPROACH: Climb to 3000 direct NOMUF and hold.

AWOS-3 128.55	INDIANAPOLIS APP CON 120.65 317.8	ANDERSON TOWER ★ 126.0 (CTAF) 0	GND CON 121.6	UNICOM 122.95
-------------------------	---	---	-------------------------	-------------------------

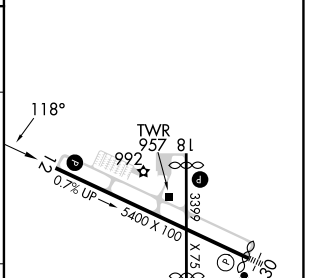


EC-2, 28 NOV 2024 to 26 DEC 2024

EC-2, 28 NOV 2024 to 26 DEC 2024



ELEV 919	TDZE 897
----------	----------



CATEGORY	A	B	C	D
LPV DA		1157-3/4	260 (300-3/4)	
LNAV/VNAV DA		1218-1	321 (300-1)	
LNAV MDA	1340-1	443 (500-1)	1340-1 3/8	443 (500-1 3/8)
C CIRCLING	1360-1 441 (500-1)	1400-1 481 (500-1)	1520-1 3/4 601 (700-1 3/4)	1520-2 601 (700-2)

MIRL Rwy 12-30 and 18-36 **0**
REL Rwy 12