

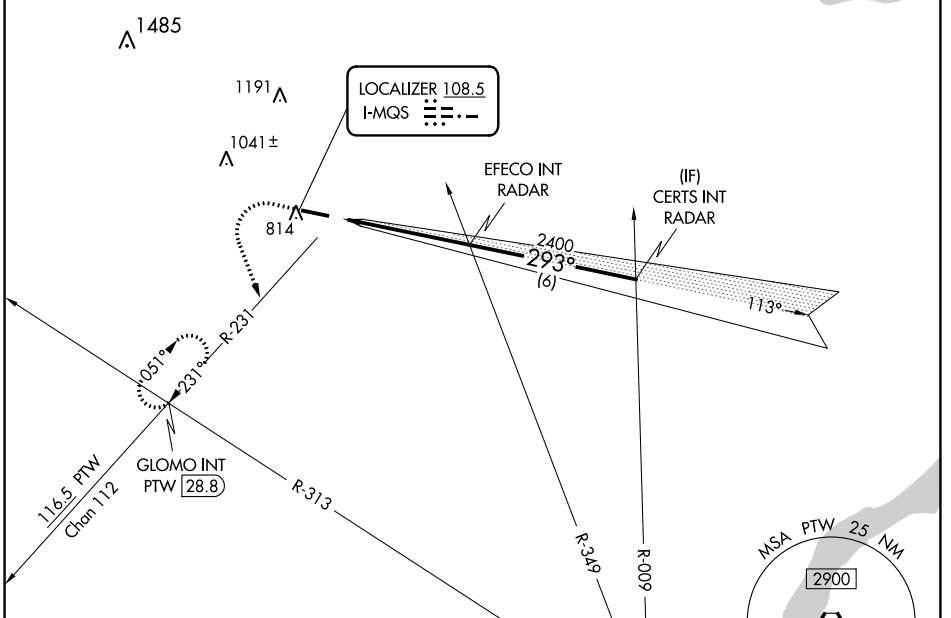
LOC I-MQS 108.5	APP CRS 293°	Rwy ldg TDZE Apt Elev	5400 660 660
---------------------------	------------------------	-----------------------------	---

ILS or LOC RWY 29

CHESTER COUNTY G O CARLSON (MQS)

RADAR required for procedure entry.		MISSED APPROACH: Climb to 3000 then climbing left turn to 3000 on heading 170° and PTW R-231 to GLOMO INT/PTW 28.8 DME and hold, continue climb-in-hold to 3000.	
-------------------------------------	--	--	--

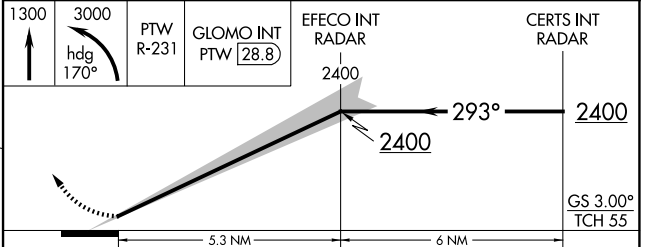
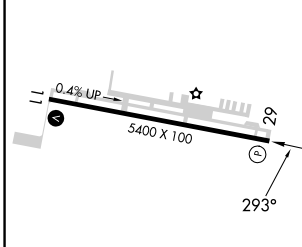
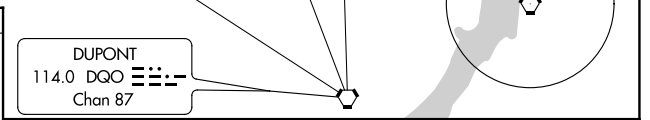
AWOS-3 126.25	PHILADELPHIA APP CON 124.35 319.15	CLNC DEL 125.6	UNICOM 122.7 (CTAF)
-------------------------	--	--------------------------	-------------------------------



NE-4, 28 NOV 2024 to 26 DEC 2024

NE-4, 28 NOV 2024 to 26 DEC 2024

ELEV 660	TDZE 660
----------	----------



HIRL Rwy 11-29 REIL Rwys 11 and 29 FAF to MAP 5.3 NM	Knots	60	90	120	150	180
	Min:Sec	5:18	3:32	2:39	2:07	1:46
CIRCLING	Category	A	B	C	D	
	S-ILS 29		910-3/4	250 (300-3/4)		
CIRCLING	S-LOC 29		1040-1	380 (400-1)		
		1140-1 480 (500-1)	1240-1 580 (600-1)	1260-1 1/2 600 (600-1 1/2)	1420-2 1/2 760 (800-2 1/2)	