

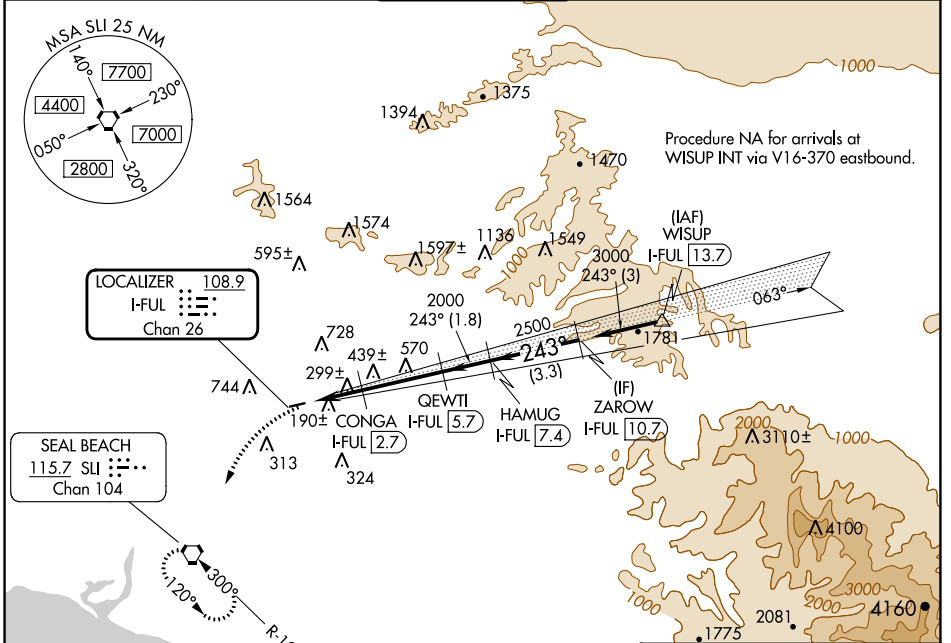
LOC/DME I-FUL 108.9 Chan 26	APP CRS 243°	Rwy Idg 2868 TDZE 95 Apt Elev 96
---	------------------------	---

LOC/DME RWY 24

FULLERTON MUNI (F'UL)

<p>▽ Inoperative table does not apply. ▲ Night landing: Rwy 6 NA. Helicopter visibility reduction below 1 SM NA.</p>	MISSED APPROACH: Climbing left turn to 2600 direct SLI VORTAC and hold.
--	---

ATIS 125.05	SOCAL APP CON 125.35 316.125	FULLERTON TOWER* 119.1 (CTAF) 0	GND CON 121.8	UNICOM 122.95
-----------------------	--	--	-------------------------	-------------------------



SW-3, 28 NOV 2024 to 26 DEC 2024

SW-3, 28 NOV 2024 to 26 DEC 2024

	ELEV 96	TDZE 95		
<p>2600 SLI</p> <p>VGSI and descent angles not coincident (VGSI Angle 4.00/TCH 33).</p> <p>ZAROW I-FUL 10.7</p> <p>CONGA I-FUL 2.7</p> <p>QEWTI I-FUL 5.7</p> <p>HAMUG I-FUL 7.4</p> <p>I-FUL 0.5</p> <p>3.45° TCH 33</p> <p>2000</p> <p>2500</p> <p>3000</p> <p>Procedure Turn NA</p> <p>2.2 NM</p> <p>2.9 NM</p> <p>1.8 NM</p> <p>3.3 NM</p>				
CATEGORY	A	B	C	D
S-24	560-1	465 (500-1)		NA
CIRCLING	760-1 664 (700-1)	1060-1½ 964 (1000-1½)		NA

MIRL Rwy 6-24	REIL Rws 6 and 24
---------------	-------------------