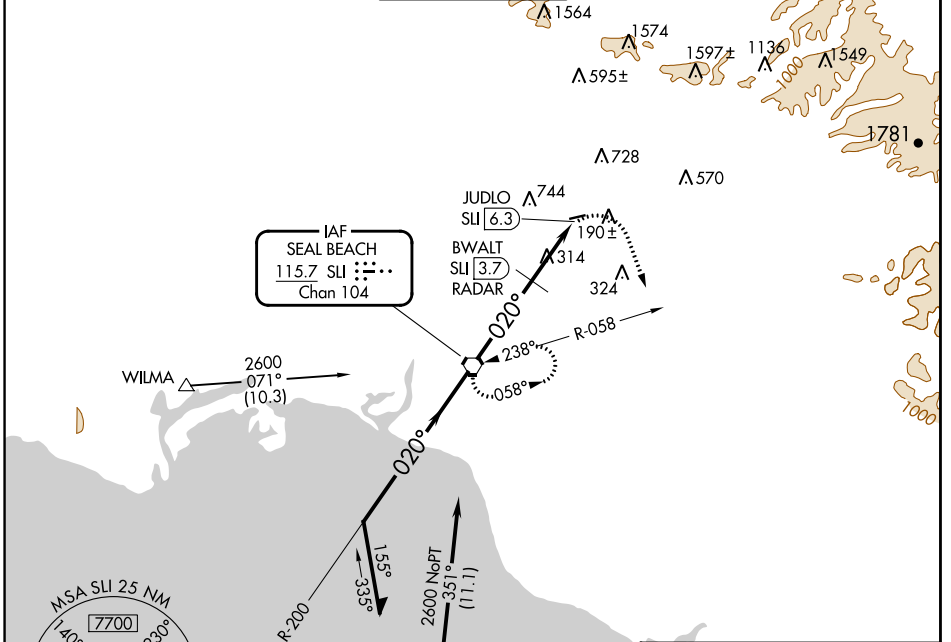


VORTAC SLI 115.7 Chan 104	APP CRS 020°	Rwy Idg TDZE Apt Elev	N/A N/A 96
---	------------------------	-----------------------------	---------------------------------------

VOR-A
FULLERTON MUNI (FUL)

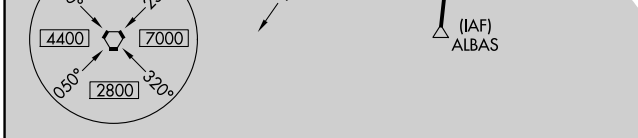
<p>▽ Maximum entry altitude 6000. ▲ Night landing: Rwy 6 NA. Helicopter visibility reduction below 1 SM NA.</p>	<p>MISSED APPROACH: Climbing right turn to 2600 via heading 145° and SLI R-058 to SLI VORTAC and hold.</p>
---	--

<p>ATIS 125.05</p>	<p>SOCAL APP CON 125.35 316.125</p>	<p>FULLERTON TOWER* 119.1 (CTAF) 0</p>	<p>GND CON 121.8</p>	<p>UNICOM 122.95</p>
-------------------------------	--	---	---------------------------------	---------------------------------

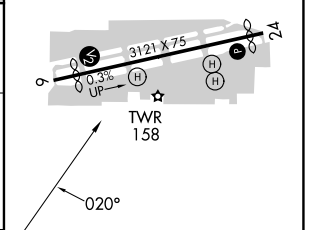
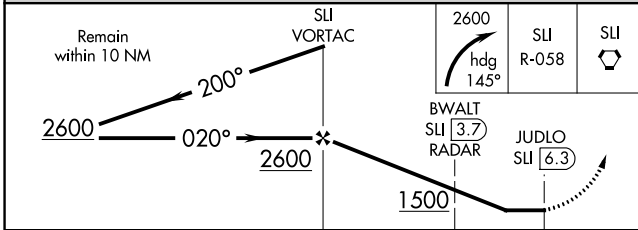


SW-3, 28 NOV 2024 to 26 DEC 2024

SW-3, 28 NOV 2024 to 26 DEC 2024



ELEV 96
MIRL Rwy 6-24 0
REIL Rwys 6 and 24 0



CATEGORY	A	B	C	D
CIRCLING	1500-1¼ 1404 (1500-1¼)	1500-1½ 1404 (1500-1½)	NA	NA
BWALT FIX MINIMUMS				
CIRCLING	760-1 664 (700-1)	1060-1½ 964 (1000-1½)	NA	NA

FAF to MAP 6.3 NM					
Knots	60	90	120	150	180
Min:Sec	6:18	4:12	3:09	2:31	2:06