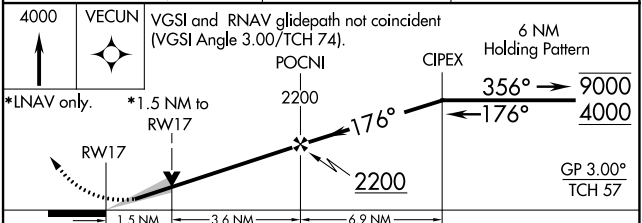
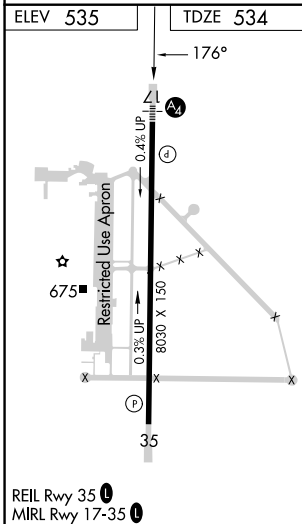
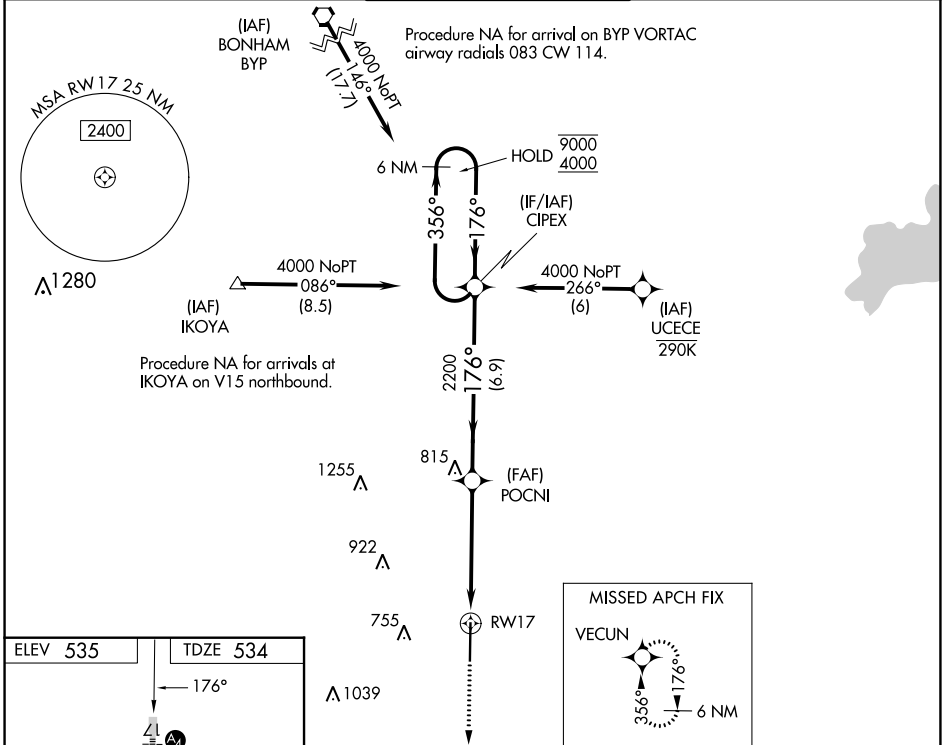


WAAS CH 86205 W17A	APP CRS 176°	Rwy Idg TDZE 534 Apt Elev 535
---------------------------------	------------------------	---

RNAV (GPS) RWY 17

MAJORS (GVT)

RNP APCH.		MALS	MISSED APPROACH: Climb to 4000 direct VECUN and hold, continue climb-in hold to 4000.		
<p>▼ Inop table does not apply to LPV and LNAV/VNAV all Cats and LNAV Cats A and B. For uncompensated Baro-VNAV systems, LNAV/VNAV NA below -16°C or above 54°C. For inop ALS, increase LNAV Cat E visibility to 1½ SM.</p>					
AWOS-3 133.425	FORT WORTH CENTER 132.025 360.75	MAJORS TOWER ★ 118.65 (CTAF) 0 385.425	GND CON 121.7 335.8	UNICOM 122.95	



VEVCUN	*LNAV only.		*1.5 NM to RWY 17		POCNI	CIPEX	6 NM Holding Pattern
4000	1.5 NM	3.6 NM	6.9 NM	2200	2200	9000	4000
CATEGORY		A	B	C	D	E	
LPV DA		734-1		200 (200-1)			
LNAV/VNAV DA		832-1		298 (300-1)			
LNAV MDA		1060-1 526 (600-1)		1060-1¼ 526 (600-1¼)			
CIRCLING		1060-1 525 (600-1)		1060-1½ 525 (600-1½)	1240-2¼ 705 (800-2¼)	1300-2¾ 765 (800-2¾)	

SC-2, 28 NOV 2024 to 26 DEC 2024

SC-2, 28 NOV 2024 to 26 DEC 2024