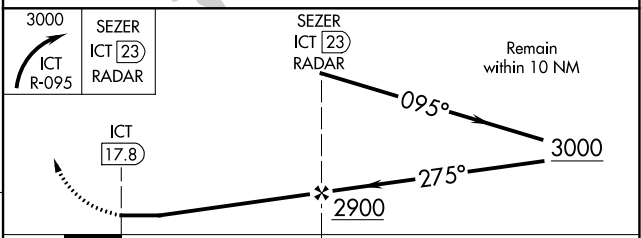
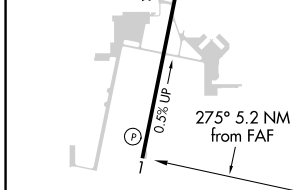
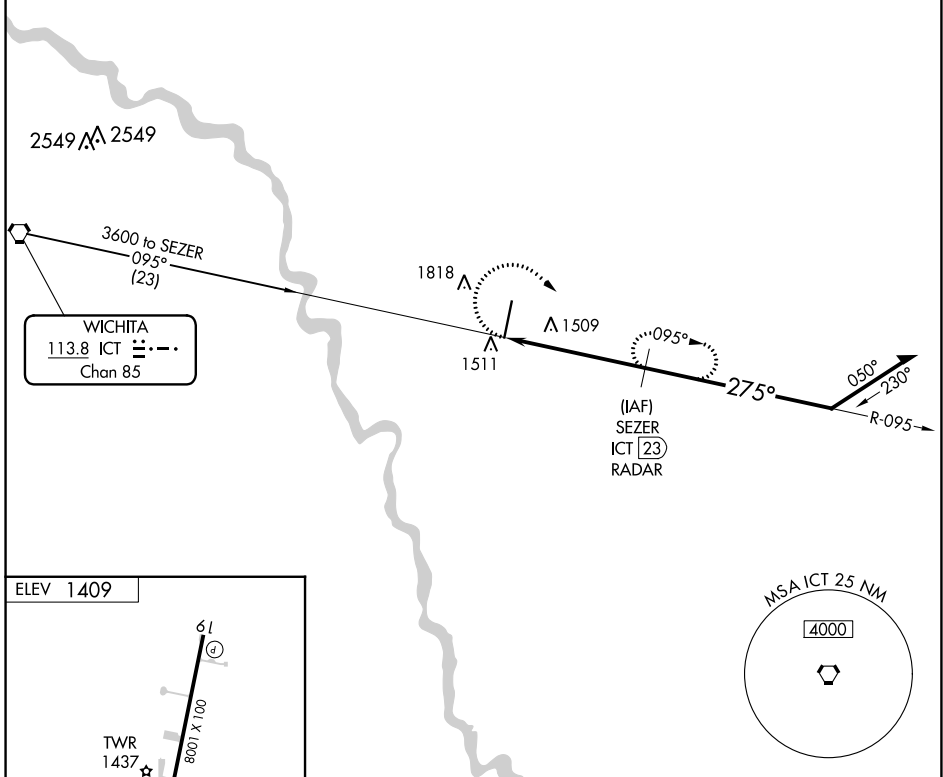


VORTAC ICT <b>113.8</b> Chan <b>85</b>	APP CRS <b>275°</b>	Rwy Idg TDZE Apt Elev <b>1409</b>	<b>N/A</b> <b>N/A</b> <b>1409</b>
--	------------------------	--	---

**VOR-B**  
BEECH FACTORY (B.E.C)

<p><b>NA</b> Obtain local altimeter setting on CTAF; when not received, use Wichita Dwight D Eisenhower NH altimeter setting and increase all MDA 40 feet and increase Cat C and D visibility 1/4 mile.</p>		<p>MISSED APPROACH: Climbing right turn to 3000 on ICT VORTAC R-095 to SEZER/ICT 23 DME/RADAR and hold.</p>			
AWOS-3PT <b>119.45</b>	WICHITA APP CON <b>134.8 269.1</b>	BEECH TOWER ★ <b>126.8 (CTAF) 0 313.6</b>	GND CON <b>121.7</b>	CLNC DEL <b>125.0</b> (When tower closed)	UNICOM <b>122.95</b>

**RADAR or DME REQUIRED**



MIRL Rwy 1-19  
REIL Rwys 1 and 19

FAF to MAP 5.2 NM					
Knots	60	90	120	150	180
Min:Sec	5:12	3:28	2:36	2:05	1:44

CATEGORY	A	B	C	D
<b>CIRCLING</b>	1840-1 431 (500-1)	2120-1 711 (800-1)	2120-2 711 (800-2)	2120-2 1/4 711 (800-2 1/4)

NC-2, 28 NOV 2024 to 26 DEC 2024

NC-2, 28 NOV 2024 to 26 DEC 2024