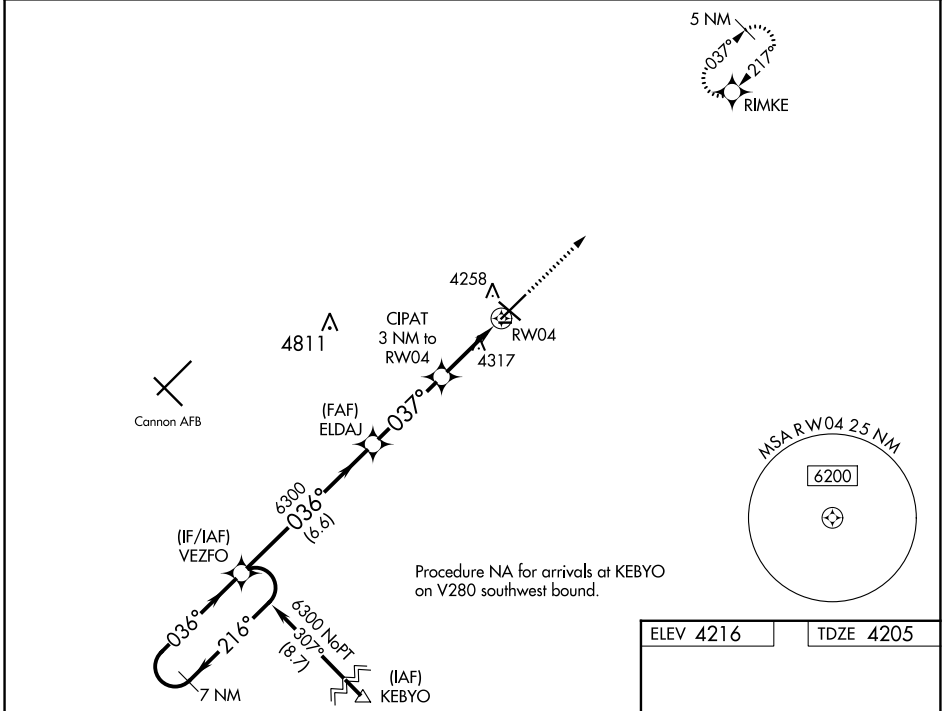


WAAS CH 97300 W04A	APP CRS 037°	Rwy Idg 7200 TDZE 4205 Apt Elev 4216
--	------------------------	---

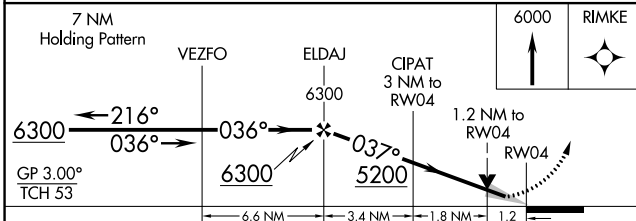
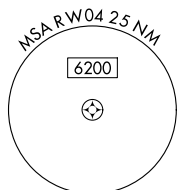
RNAV (GPS) RWY 4

CLOVIS RGNL (CVN)

RNP APCH - GPS.		MALSR	MISSED APPROACH: Climb to 6000 direct RIMKE and hold.
<p>▼ For uncompensated Baro-VNAV systems, LNAV/VNAV NA below -23°C or above 49°C. For inop ALS, increase LNAV/VNAV all Cats visibility to ¾ SM. Circling NA to Rwy 8 and 26.</p>			
AWOS-3PT 135.375	CANNON APP CON 118.425 352.1	CLNC DEL 119.0	UNICOM 122.8 (CTAF) 0



Procedure NA for arrivals at KEYBYO on V280 southwest bound.



ELEV 4216	TDZE 4205				
LPV DA	4405-½	200 (200-½)			
LNAV/VNAV DA	4455-½	250 (300-½)			
LNAV MDA	4640-½	435 (500-½)	4640-¾	435 (500-¾)	
CIRCLING	4680-1	464 (500-1)	4700-1½	4820-2	604 (700-2)

REIL Rwy 12 and 30
MIRL Rwy 4-22 and 12-30 0

SW-1, 28 NOV 2024 to 26 DEC 2024

SW-1, 28 NOV 2024 to 26 DEC 2024