

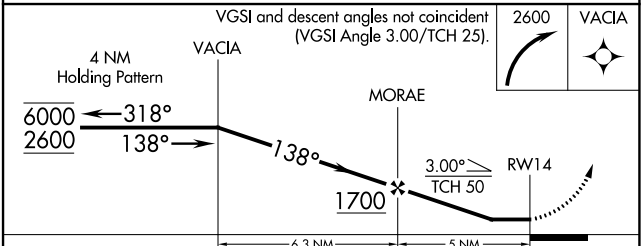
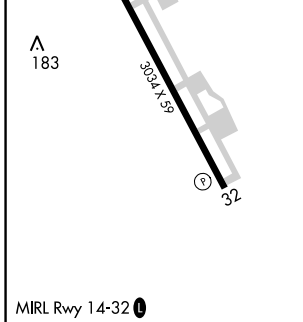
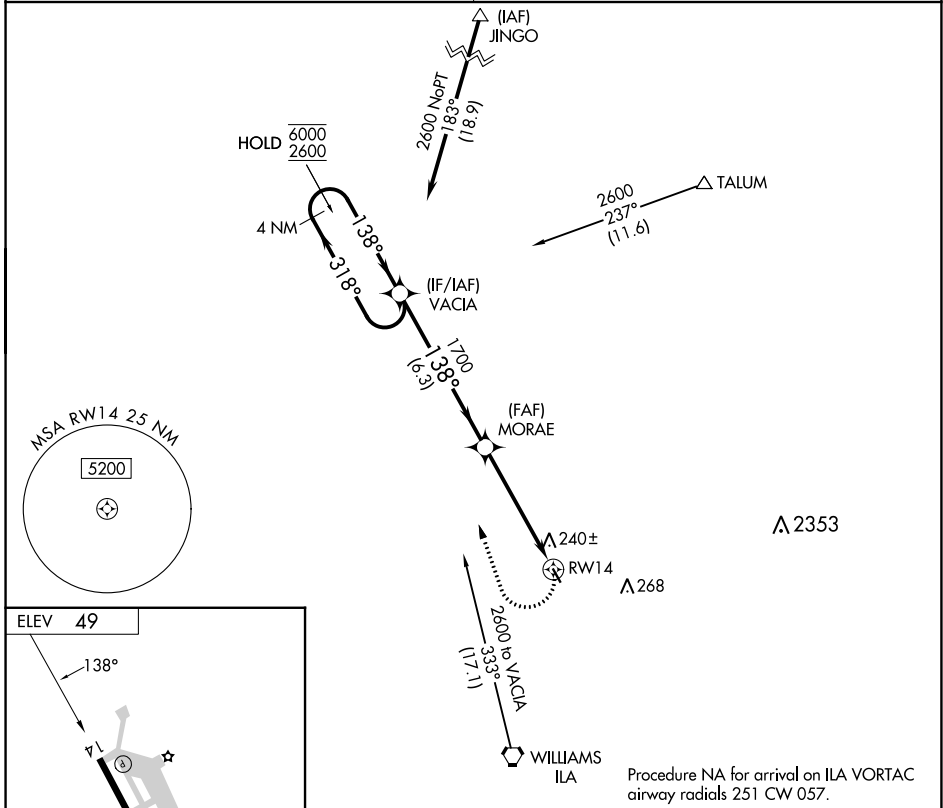
APP CRS	Rwy Idg	N/A
138°	TDZE	N/A
	Apt Elev	49

RNAV (GPS)-B

COLUSA COUNTY (008)

RNP APCH - GPS.		MISSED APPROACH: Climbing right turn to 2600 direct VACIA and hold.
<p>⚠ NA Circling Rwy 32 NA at night. Rwy 14, 32 helicopter visibility reduction below 1 SM NA. Obtain local altimeter setting on CTAF; when not received, use Sacramento Intl altimeter setting and increase all MDAs 100 feet and Cat C visibility ½ SM.</p>		

OAKLAND CENTER 132.2 350.3	UNICOM 122.8 (CTAF) 0
--------------------------------------	---------------------------------



CATEGORY	A	B	C	D
C CIRCLING	600-1	551 (600-1)	620-1½ 571 (600-1½)	NA

SW-2, 28 NOV 2024 to 26 DEC 2024

SW-2, 28 NOV 2024 to 26 DEC 2024