

WAAS CH 90108 W17A	APP CRS 174°	Rwy Ldg 7401 TDZE 1000 Apt Elev 1000
--	------------------------	---

RNAV (GPS) RWY 17

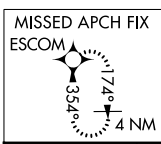
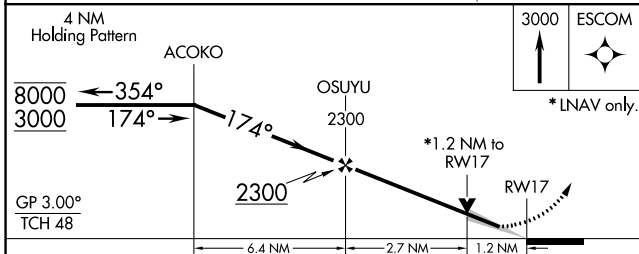
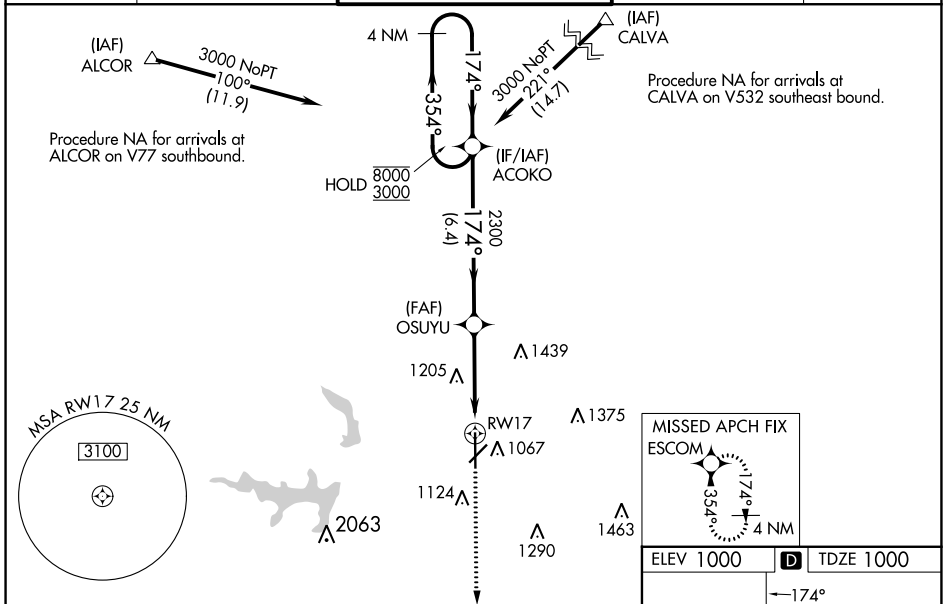
STILLWATER RGNL (SWO)

RNP APCH - GPS.

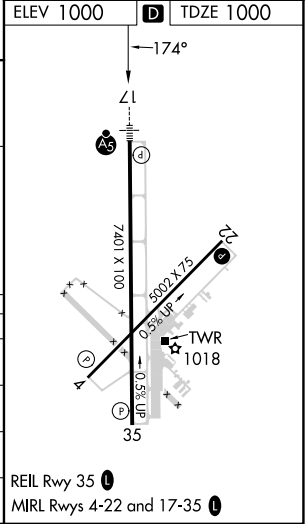
⚠ For uncompensated Baro-VNAV systems, LNAV/VNAV NA below -15°C or above 54°C. VDP and Baro-VNAV NA when using Ponca City altimeter setting. For inop ALS when using Ponca City altimeter setting, increase LPV visibility to ¾ SM, LNAV/VNAV visibility to 1 SM, and LNAV Cats C and D visibility to 1 ¾ SM. When local altimeter setting not received, use Ponca City altimeter setting; increase LPV DA to 1280 feet; increase LNAV/VNAV DA to 1359 feet and all visibilities ½ SM; increase all MDA 80 feet and visibility LNAV Cats C and D ¼ SM and Circling Cat D ½ SM. For inop ALS, increase LNAV/VNAV visibility to ¾ SM.

MALS MISSED APPROACH: Climb to 3000 direct ESCOM and hold.

ASOS 135.725	KANSAS CITY CENTER 127.8 319.1	STILLWATER TOWER ★ 125.35 (CTAF) 0	GND CON 121.6	UNICOM 122.95
------------------------	--	--	-------------------------	-------------------------



CATEGORY	A	B	C	D
LPV DA		1200-½	200 (200-½)	
LNAV/VNAV DA		1279-½	279 (300-½)	
LNAV MDA	1440-½	440 (500-½)	1440-¾	440 (500-¾)
CIRCLING	1440-1 440 (500-1)	1460-1 460 (500-1)	1520-1½ 520 (600-1½)	1740-2¼ 740 (800-2¼)



SC-1, 28 NOV 2024 to 26 DEC 2024

SC-1, 28 NOV 2024 to 26 DEC 2024