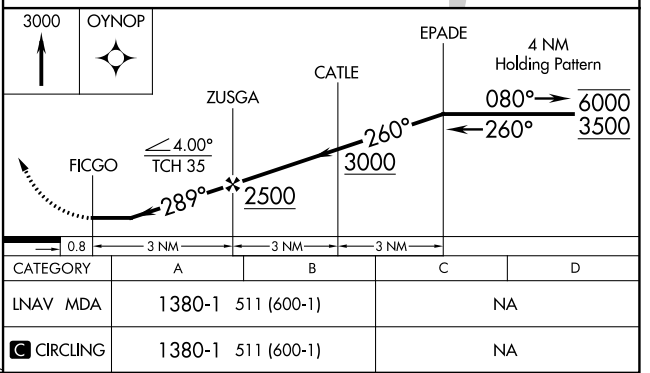
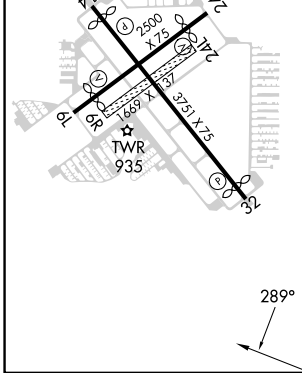
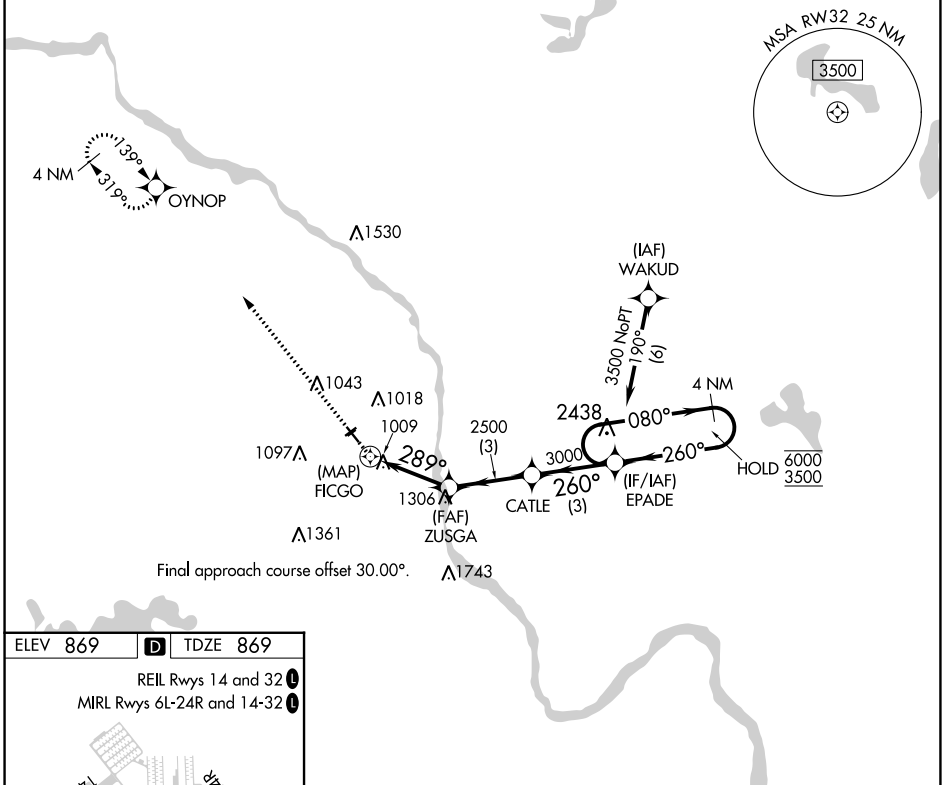


APP CRS	Rwy Idg	3509
289°	TDZE	869
	Apt Elev	869

RNAV (GPS) RWY 32

CRYSTAL (MIC)

RNP APCH.		MISSED APPROACH: Climb to 3000 direct OYNOP and hold.						
<p>▼ Circling NA to Rwys 6R and 24L.</p> <p>▲ Rwy 32 helicopter visibility reduction below 3/4 SM NA.</p>		ATIS	MINNEAPOLIS APP CON	CRYSTAL TOWER*	GND CON	CLNC DEL	CLNC DEL	UNICOM
		124.475	126.5 335.65	120.7 (CTAF) 0	121.6	121.6	121.6 (When twr closed)	122.95



NC-1, 28 NOV 2024 to 26 DEC 2024

NC-1, 28 NOV 2024 to 26 DEC 2024