

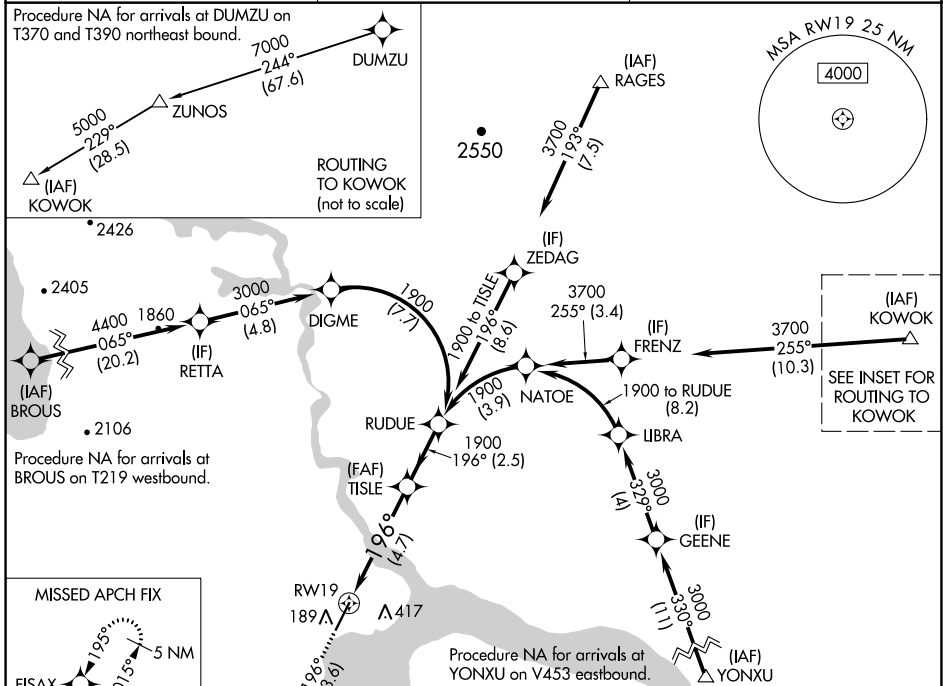
APP CRS	Rwy Idg	<b>6400</b>
<b>196°</b>	TDZE	<b>81</b>
	Apt Elev	<b>82</b>

# RNAV (RNP) Y RWY 19

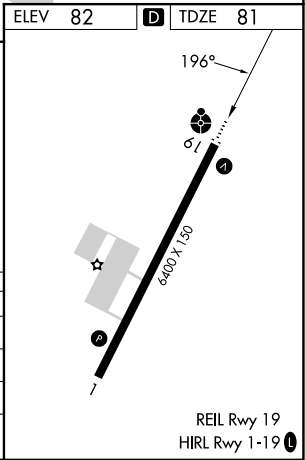
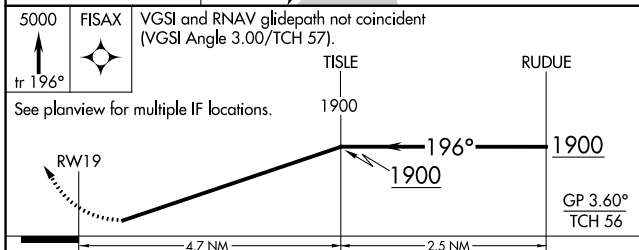
DILLINGHAM (DLG)(PADL)

RNP AR APCH - GPS.	ODALS	MISSED APPROACH: Climb to 5000 on track 196° to FISAX and hold, continue climb-in-hold to 5000.
<p>▼ For uncompensated Baro-VNAV systems, procedure NA below -25°C or above 54°C. Inop table does not apply to RNP 0.10 and RNP 0.30. For inop ALS, increase RNP 0.20 Cat A and B visibility to 1 1/2 SM.</p>		

AFIS <b>125.0</b>	ANCHORAGE CENTER <b>132.75 282.35</b>	DILLINGHAM RADIO <b>123.6 (CTAF) ①</b>
----------------------	--	---



ELEV	<b>82</b>	TDZE	<b>81</b>
------	-----------	------	-----------



CATEGORY	A	B	C	D
RNP 0.10 DA		429-1 348 (400-1)		NA
RNP 0.20 DA		468-1 387 (400-1)		NA
RNP 0.30 DA		596-1 515 (600-1 1/2)		NA

**AUTHORIZATION REQUIRED**

AK, 31 OCT 2024 to 26 DEC 2024

AK, 31 OCT 2024 to 26 DEC 2024