

WAAS CH <b>82025</b> <b>W01A</b>	APP CRS <b>015°</b>	Rwy Idg TDZE <b>82</b> Apt Elev <b>82</b>
--	------------------------	---

# RNAV (GPS) Z RWY 1

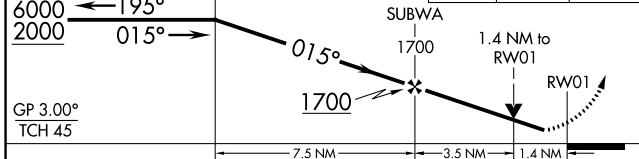
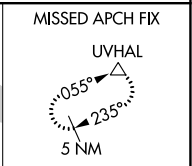
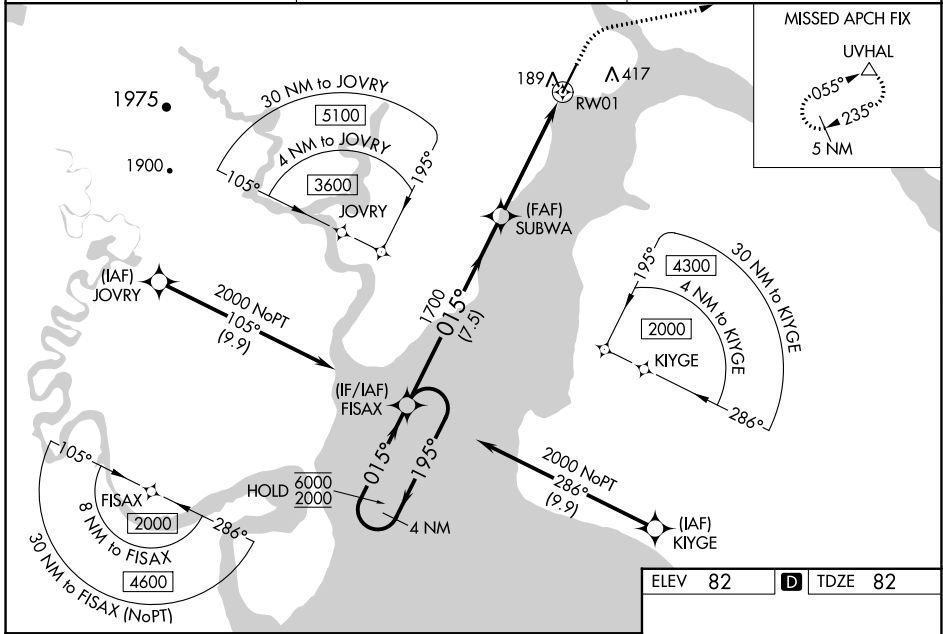
DILLINGHAM (DLG)(PADL)

RNP APCH - GPS.

⚠ Circling NA east of Rwy 1-19. For uncompensated Baro-VNAV systems, procedure NA below -20°C or above 54°C. Rwy 1 helicopter visibility reduction below 3/4 SM NA. Baro-VNAV and VDP NA when using Manokotak altimeter setting. When local altimeter setting not received, use Manokotak altimeter setting and increase LPV DA to 367 feet; increase LNAV/VNAV DA to 486 feet and all visibilities 1/2 SM. Increase all MDAs 40 feet and LNAV visibility Cat C/D 1/2 SM.

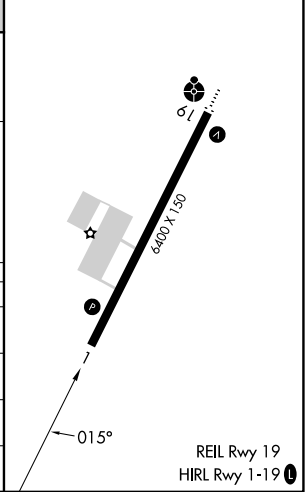
MISSED APPROACH: Climb to 600 then climbing right turn to 2000 direct UVHAL and hold.

AFIS <b>125.0</b>	ANCHORAGE CENTER <b>132.75 282.35</b>	DILLINGHAM RADIO <b>123.6 (CTAF) 0</b>
----------------------	--	---



ELEV 82	<b>D</b> TDZE 82
---------	------------------

CATEGORY	A	B	C	D
LPV DA		332-1	250 (300-1)	
LNAV/VNAV DA		451-1	369 (400-1)	
LNAV MDA	580-1	498 (500-1)	580-1 3/8	498 (500-1 3/8)
<b>C</b> CIRCLING	580-1	498 (500-1)	700-1 3/4	700-2
			618 (700-1 3/4)	618 (700-2)



AK, 31 OCT 2024 to 26 DEC 2024

AK, 31 OCT 2024 to 26 DEC 2024