

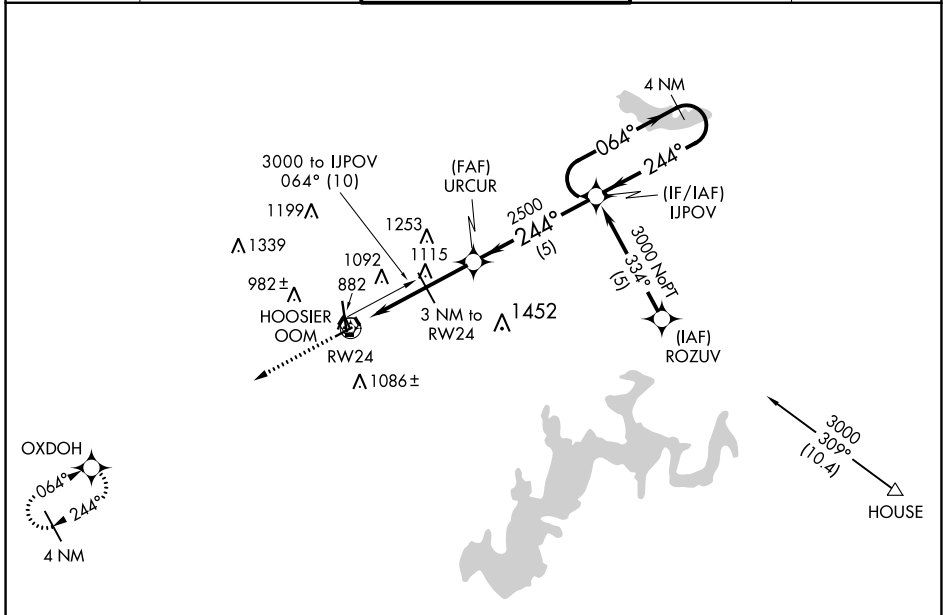
APP CRS <b>244°</b>	Rwy Idg <b>3576</b>
	TDZE <b>841</b>
	Apt Elev <b>846</b>

# RNAV (GPS) RWY 24

MONROE COUNTY (BMG)

RNP APCH.	MISSED APPROACH: Climb to 3000 direct OXDOH WP and hold.
<p>▼ Rwy 24 helicopter visibility reduction below 1 SM NA. Procedure NA at night.</p> <p>▲ When local altimeter setting not received use Terre Haute Rgnl altimeter setting and increase all MDA 140 feet; increase LNAV Cat C/D ¼ mile.</p>	

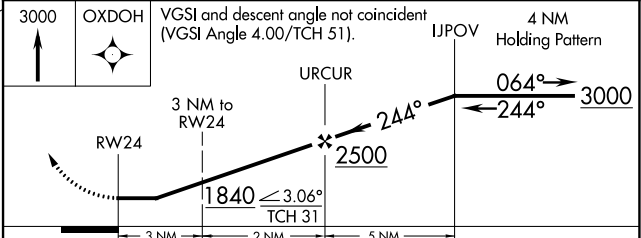
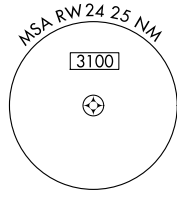
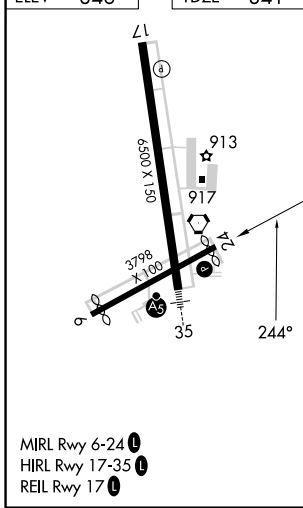
ASOS <b>134.525</b>	HULMAN APP CON <b>128.025 339.8</b>	BLOOMINGTON TOWER * <b>120.775 (CTAF) 0</b>	GND CON <b>121.9</b>	UNICOM <b>122.95</b>
------------------------	--	--	-------------------------	-------------------------



EC-2, 28 NOV 2024 to 26 DEC 2024

EC-2, 28 NOV 2024 to 26 DEC 2024

ELEV 846	TDZE 841
----------	----------



CATEGORY	A	B	C	D
LNAV MDA	1320-1	479 (500-1)	1320-1¼ 479 (500-1¼)	1320-1½ 479 (500-1½)