

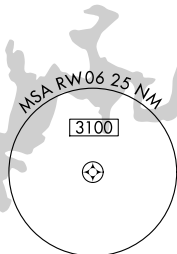
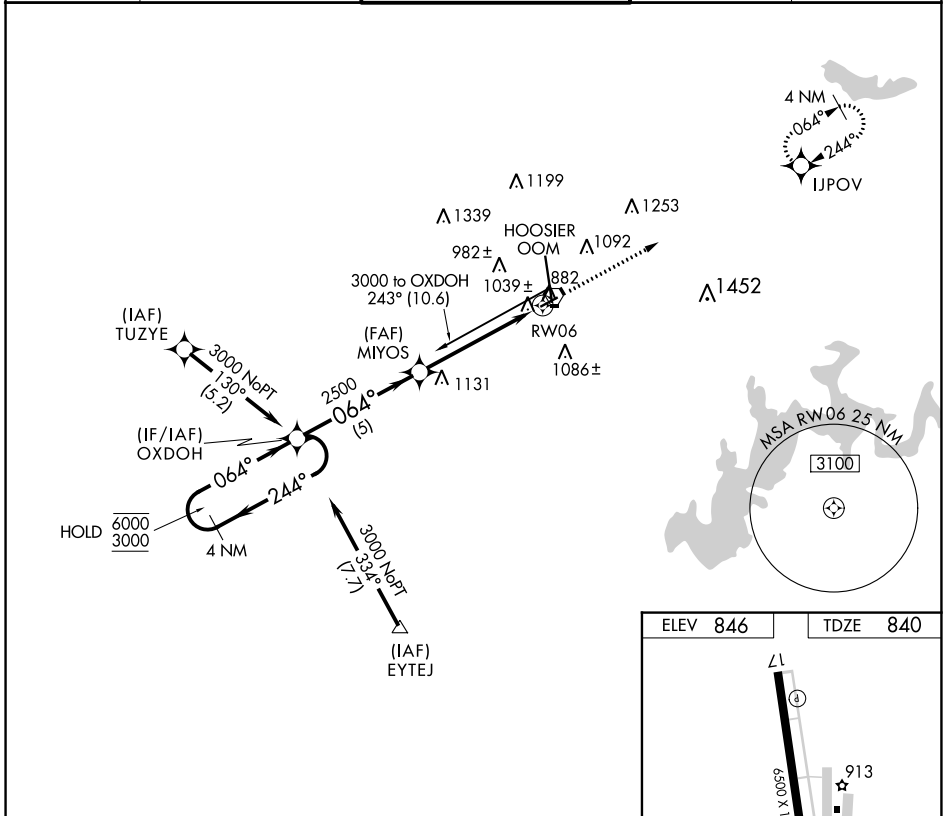
APP CRS	Rwy Idg	3494
064°	TDZE	840
	Apt Elev	846

RNAV (GPS) RWY 6

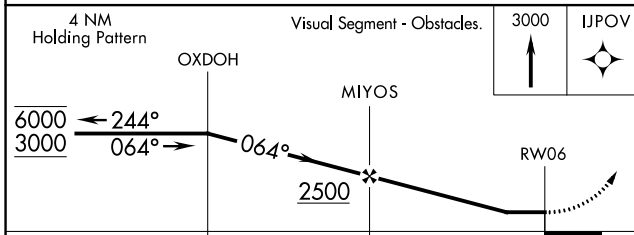
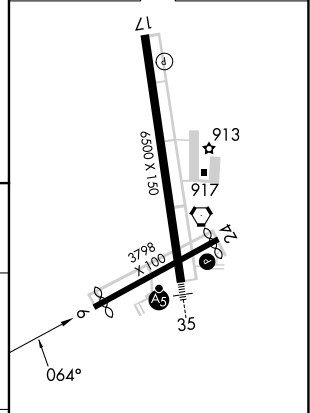
MONROE COUNTY (BMG)

RNP APCH.		MISSED APPROACH: Climb to 3000 direct IJPOV and hold.		
<p>Procedure NA at night. Rwy 6 helicopter visibility reduction below 1 SM NA.</p>				

ASOS 134.525	HULMAN APP CON 128.025 339.8	BLOOMINGTON TOWER * 120.775 (CTAF) 0	GND CON 121.9	UNICOM 122.95
------------------------	--	--	-------------------------	-------------------------



ELEV 846	TDZE 840
----------	----------



CATEGORY	A	B	C	D
LNNAV MDA	1300-1	460 (500-1)	1300-1¼ 460 (500-1¼)	1300-1½ 460 (500-1½)

MIRL Rwy 6-24 0
HIRL Rwy 17-35 0
REIL Rwy 17 0

EC-2, 28 NOV 2024 to 26 DEC 2024

EC-2, 28 NOV 2024 to 26 DEC 2024