

APP CRS	Rwy Idg	<b>6500</b>
<b>055°</b>	TDZE	<b>46</b>
	Apt Elev	<b>47</b>

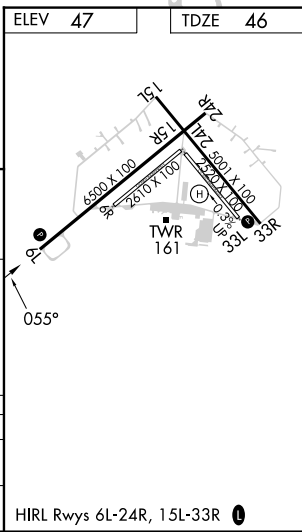
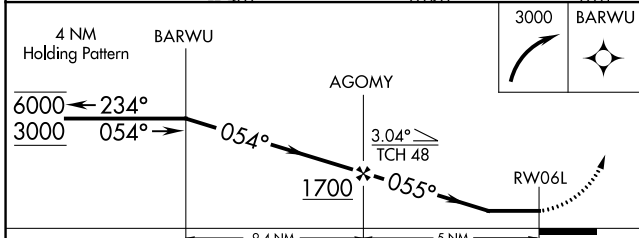
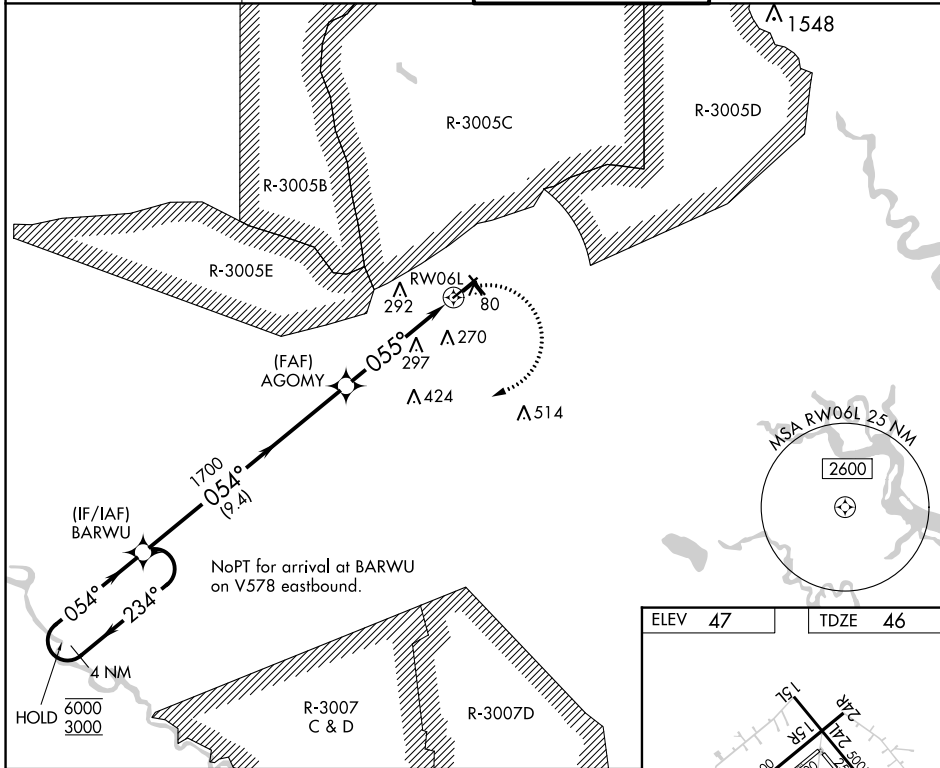
# RNAV (GPS) RWY 6L

WRIGHT AAF (FORT STEWART)/MIDCOAST RGNL (LHW)

RNP APCH.  
 RADAR required.  
 ⚠ Circling NA northeast of Rwy 15L-33R. Rwy 6L helicopter visibility reduction below 1 SM NA. Procedure NA when R3005C/D or R3007C is active and LHW tower is closed. Straight-in/ Circling Rwy 6L NA at night and Circling Rwy 24R NA at night.

MISSED APPROACH: Climbing right turn to 3000 direct BARWU and hold.

ATIS ★ <b>118.475</b>	SAVANNAH APP CON★ <b>120.4 353.775</b>	WRIGHT TOWER ★ <b>126.25 (CTAF) 0 269.275</b>	GND CON <b>121.7 273.575</b>
--------------------------	---	--	---------------------------------



CATEGORY	A	B	C	D
LNVA MDA	600-1	554 (600-1)	600-1½	554 (600-1½)
<b>C</b> CIRCLING	600-1 553 (600-1)	620-1 573 (600-1)	680-1¾ 633 (700-1¾)	680-2 633 (700-2)

HIRL Rwy 6L-24R, 15L-33R

SE-4, 28 NOV 2024 to 26 DEC 2024

SE-4, 28 NOV 2024 to 26 DEC 2024