

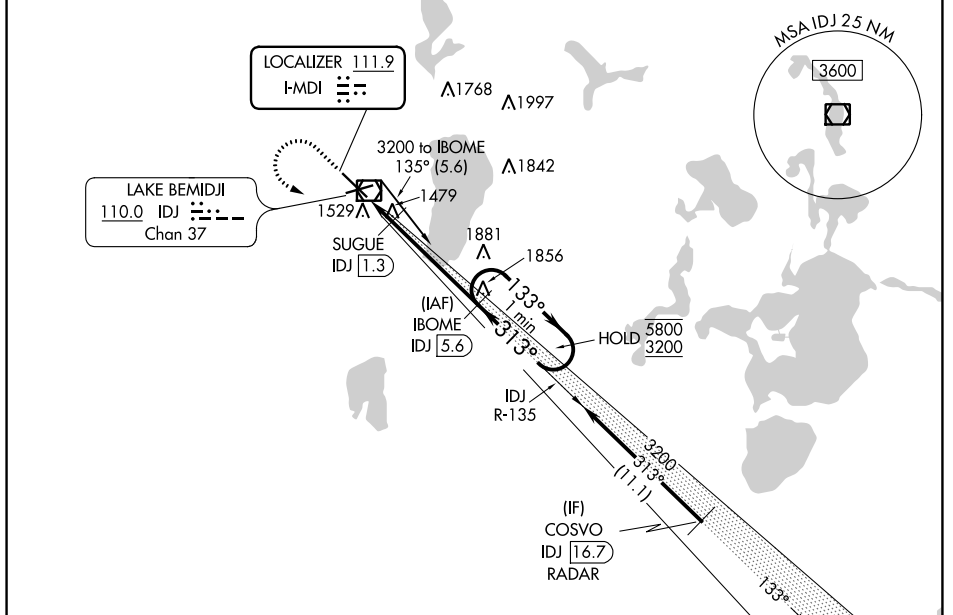
LOC I-MDI 111.9	APP CRS 313°	Rwy ldg 7002
		TDZE 1389
		Apt Elev 1391

ILS or LOC RWY 31

BEMIDJI RGNL (BJI)

DME required. RADAR required for procedure entry.		MALSR 	MISSED APPROACH: Climb to 2400 then climbing left turn to 3200 on heading 100° and IDJ VOR/DME R-135 to IBOME/IDJ 5.6 DME and hold.
Autopilot coupled approach NA below 2126. DME from IDJ VOR/DME. Simultaneous reception of I-MDI and IDJ DME required. For inop ALS, increase S-LOC 31 Cat C/D visibility to 1 SM.			

AWOS-3 119.275	MINNEAPOLIS CENTER 134.75 251.1	UNICOM 122.8 (CTAF) 0
--------------------------	---	---------------------------------



ELEV 1391	TDZE 1389
HIRL Rwy 13-31 313° 5.6 NM from FAF MIRL Rwy 7-25 REIL Rwys 7 and 25	
FAF to MAP 5.6 NM	
Knots	60 90 120 150 180
Min:Sec	5:36 3:44 2:48 2:14 1:52

2400	3200	IDJ R-135	IBOME IDJ 5.6	IBOME IDJ 5.6	3200	5800	3200
↑	hdg 100°				One Minute Holding Pattern		
*LOC only							
SUGUE IDJ 1.3		133° → 5800		← 313°		← 3200	
1840*		GS 3.00°		TCH 45			
← 1.3 NM		← 4.3 NM					
CATEGORY	A	B	C	D			
S-ILS 31	1589-½		200 (200-½)				
S-LOC 31	1740-½ 351 (400-½)		1740-⅝ 351 (400-⅝)				

NC-1, 28 NOV 2024 to 26 DEC 2024

NC-1, 28 NOV 2024 to 26 DEC 2024