

|                |             |          |             |
|----------------|-------------|----------|-------------|
| VOR/DME IDJ    | APP CRS     | Rwy Idg  | <b>7002</b> |
| <b>110.0</b>   | <b>126°</b> | TDZE     | <b>1391</b> |
| Chan <b>37</b> |             | Apt Elev | <b>1391</b> |

# VOR/DME RWY 13

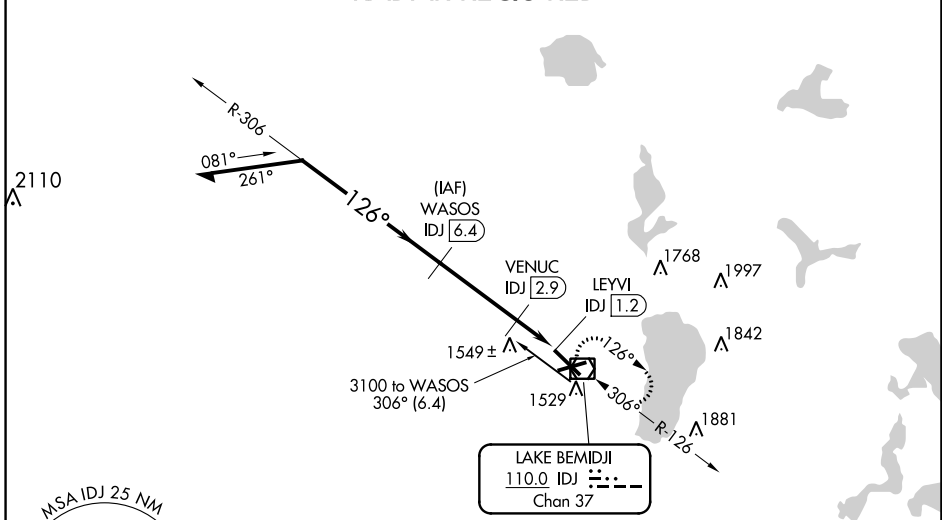
BEMIDJI RGNL (BJI)

**NA** When local altimeter setting not received, use Park Rapids altimeter setting and increase all MDA 100 feet, increase S-13 Cat C and D visibility 1/4 mile. VDP NA with Park Rapids altimeter setting. For inoperative MALSRL, increase S-13 Cat A and B visibility to 1 mile and Cat C and D visibility to 1 1/2 mile. For inoperative MALSRL when using Park Rapids altimeter setting, increase S-13 Cat A and B visibility to 1 mile and Cat C and D visibility to 1 3/8 mile. Helicopter visibility reduction below 3/4 SM not authorized.

**MALSRL** MISSED APPROACH: Climb to 3100 direct IDJ VOR/DME and hold, continue climb-in-hold to 3100.

|                          |   |                               |
|--------------------------|---|-------------------------------|
| AWOS-3<br><b>119.275</b> | MINNEAPOLIS CENTER<br><b>134.75 251.1</b> | UNICOM<br><b>122.8 (CTAF)</b> |
|--------------------------|---|-------------------------------|

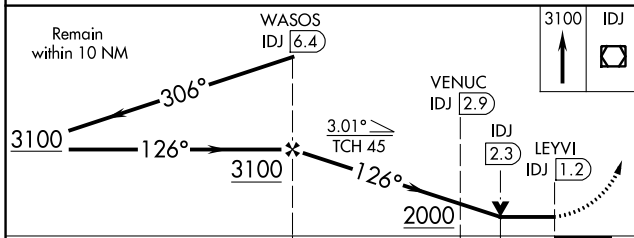
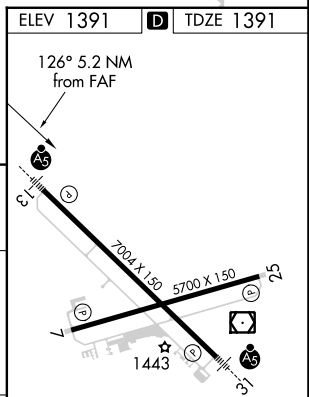
## RADAR REQUIRED



NC-1, 28 NOV 2024 to 26 DEC 2024

NC-1, 28 NOV 2024 to 26 DEC 2024

|           |                    |
|-----------|--------------------|
| ELEV 1391 | <b>D</b> TDZE 1391 |
|-----------|--------------------|



| CATEGORY          | A                      | B                     | C                             | D                     |
|-------------------|------------------------|-----------------------|-------------------------------|-----------------------|
| S-13              | 1800-3/4 409 (500-3/4) |                       |                               |                       |
| <b>C</b> CIRCLING | 1840-1<br>449 (500-1)  | 1860-1<br>469 (500-1) | 1860-1 1/2<br>469 (500-1 1/2) | 1960-2<br>569 (600-2) |

HIRL Rwy 13-31  
MIRL Rwy 7-25  
REIL Rws 7 and 25