

PLESS FIVE DEPARTURE

AL-5178 (FAA)

ST LOUIS RGNL (ALN)
ALTON/ST. LOUIS, ILLINOIS

EC-3, 28 NOV 2024 to 26 DEC 2024

ATIS
128.0
CINC DEL
120.2 (when tower closed)
GND CON
120.2

REGIONAL TOWER*
126.0 239.0
ST LOUIS DEP CON
124.2 353.9

TAKEOFF MINIMUMS
Rwys 11, 17, 29, 35: Standard.

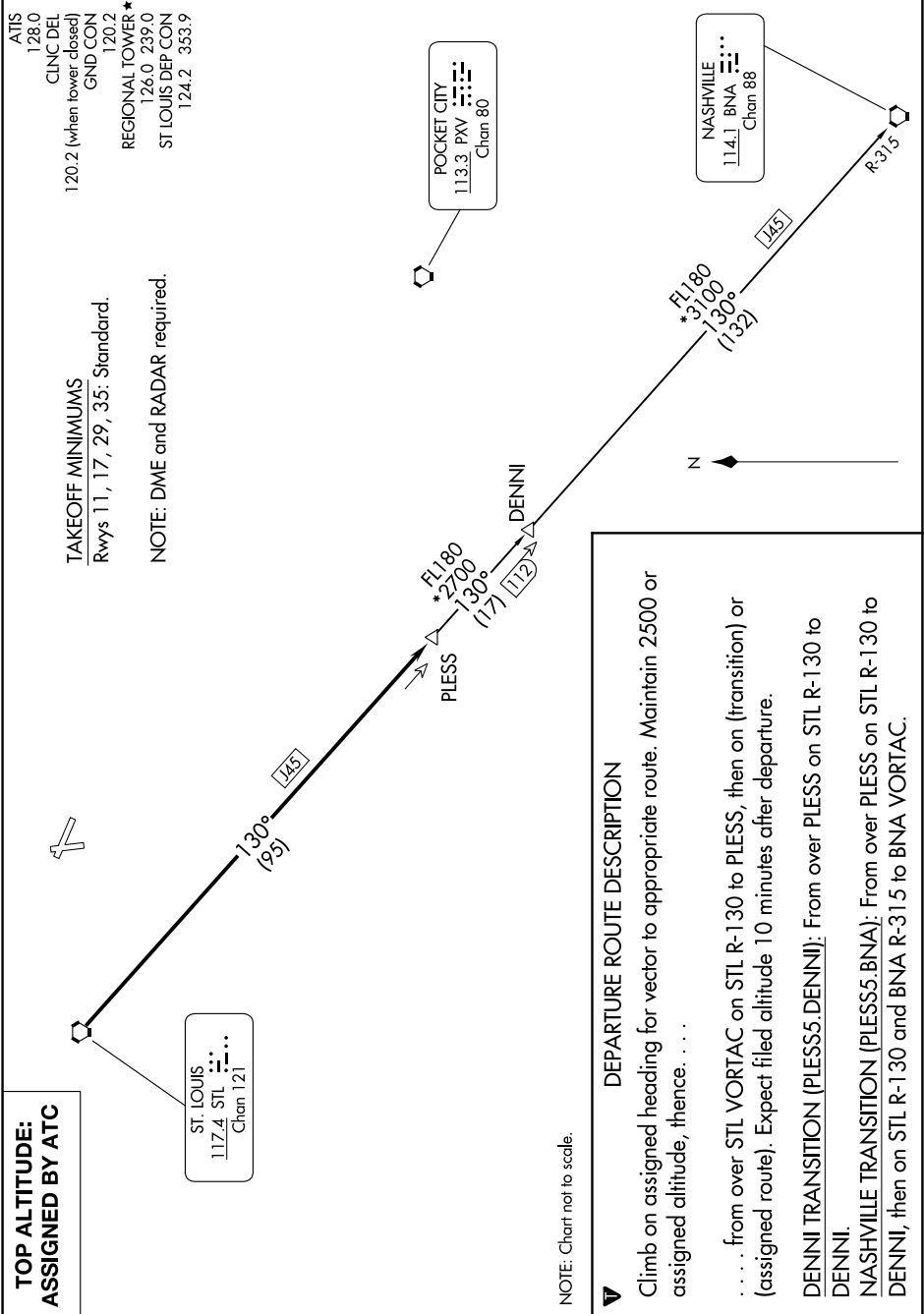
NOTE: DME and RADAR required.

**TOP ALTITUDE:
ASSIGNED BY ATC**

ST. LOUIS
117.4 STL
Chan 121

POCKET CITY
113.3 PXV
Chan 80

NASHVILLE
114.1 BNA
Chan 88



NOTE: Chart not to scale.

▼ DEPARTURE ROUTE DESCRIPTION

Climb on assigned heading for vector to appropriate route. Maintain 2500 or assigned altitude, thence. . . .

. . . . from over STL VORTAC on STL R-130 to PLESS, then on (transition) or (assigned route). Expect filed altitude 10 minutes after departure.

DENNII TRANSITION (PLESS5.DENNII): From over PLESS on STL R-130 to DENNII.

NASHVILLE TRANSITION (PLESS5.BNA): From over PLESS on STL R-130 to DENNII, then on STL R-130 and BNA R-315 to BNA VORTAC.

PLESS FIVE DEPARTURE

EC-3, 28 NOV 2024 to 26 DEC 2024