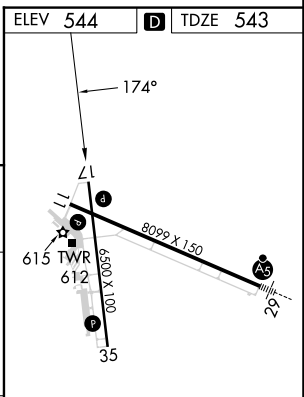
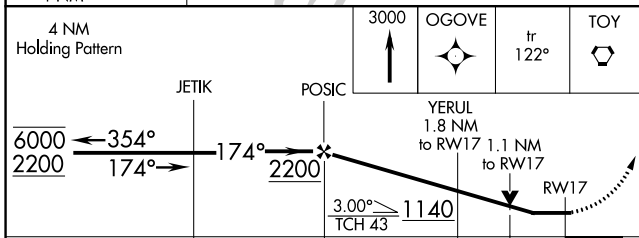
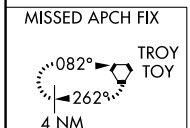
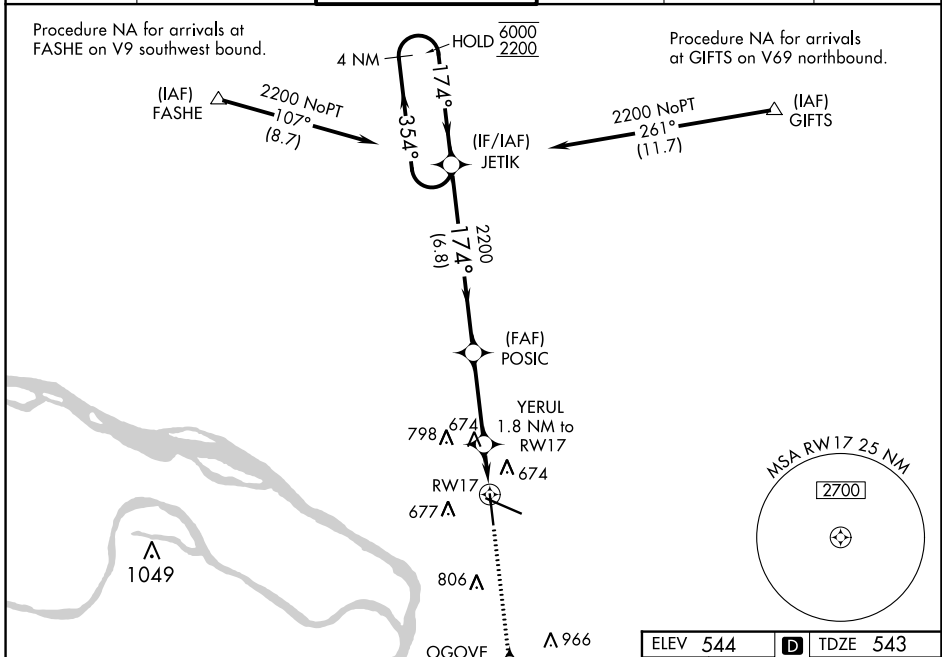


APP CRS	Rwy Idg	6500
174°	TDZE	543
	Apt Elev	544

RNAV (GPS) RWY 17

ST LOUIS RGNL (ALN)

RNP APCH.		MISSED APPROACH: Climb to 3000 direct OGOVE and on track 122° to TOY VORTAC and hold.	
Rwy 17 helicopter visibility reduction below 3/4 SM NA.			
ATIS	ST LOUIS APP CON	REGIONAL TOWER*	GND CON
128.0	124.2 353.9	126.0 (CTAF) 0 239.0	120.2
			CLNC DEL
			120.2 (when tower closed)
			UNICOM
			122.95



CATEGORY	A	B	C	D
LNNAV MDA	940-1	397 (400-1)	940-1 1/8	397 (400-1 1/8)
CIRCLING	1000-1	456 (500-1)	1160-1 3/4	1200-2
			616 (700-1 3/4)	656 (700-2)

REIL Rwy 11
 HIRL Rwy 11-29
 MIRL Rwy 17-35

EC-3, 28 NOV 2024 to 26 DEC 2024

EC-3, 28 NOV 2024 to 26 DEC 2024